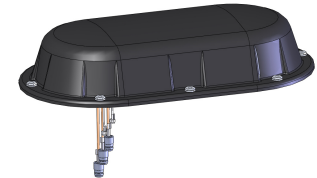


SM600D(WI-GPS) GPS, WiFi, 694-2700MHz diversity low profile transport antenna

- 4 element antenna, dual 694-2700 MHz full band, one GPS and one WiFi
- The 694-2700 MHz twin elements are expandable for multiple radio system or diversity uses
- A maximum height of 4-1/4 inches complies with restriction for locomotives and other vehicles
- Black weather resistant and fire rated radome provides excellent environmental protection

The SM600D series antenna is intended primarily for wireless coverage in transportation applications. This antenna is designed for ease of installation and minimal visual impact. It features a low profile and unobtrusive black housing that is perfect for mounting to a typical metal vehicle rooftop. Heavy duty base plate equipped with durable gasket provides maintenance free water sealing without RTV. SM600D(WI-GPS) comes with 4 ports, one for GPS, one for WiFi or WiMax and two for 694-2700 MHz full band. The two broadband ports have identical broadband radiation element. Two identical elements integrated inside the antenna can be used for diversity purpose. They can also be used for different radios providing maximal flexibility for a multiple radio system. Each element covers full frequency range of 694-2700 MHz, can be used for LTE700, LTE2600, 700MHz public safety, WiFi, GSM850, GSM900, GSM1800, GSM1900, AWS, EDGE, WCDMA, CDMA2000, UMTS, PHS, DECT, PCS cellular and more. Each port can support multiple systems simultaneously with Sinclair's cross band combiners including FX2300 series, FX2400 series, FX3400 series, FX4500 series, and other custom combiners. It can also be expanded for multiple uses quickly without interference with the existing service. Please contact Sinclair customer service for the custom combining solution for your system.



The WiFi port covers 2400-6000MHz full band applicable for various WiFi or WiMax systems. With built-in high gain low noise amplifier and saw filter, the active GPS antenna maximizes the GPS receiver performance.

The antenna is fed by typical one foot pigtailed, LMR200-FR for Cell/LTE and WiFi and LMR-100A-FR for GPS. Various connector options are available.

Application Notes

- Always check the label on pigtail to make correct connection.
- To perform properly, the antenna needs to be installed on a metal surface with minimum size of 18x28in.

Region	United States	Europe, Middle East and Africa	Caribbean and Latin America	Canada and rest of the world
Telephone	USA: 1 800 263 3275	International: +44 (0) 1487 84 28 19	International: +1 905 726 7676	Canada: 1 800 263 3275 International: +1 905 727 0165
E-mail	salesusa@sinctech.com	salesuk@sinctech.com	salesla@sinctech.com	salescan@sinctech.com

Electrical Specifications

Frequency Range 1 (F1)	MHz	694 to 2700	*1
Gain F1 (typ)	dBd (dBi)	unity (2.1)	
Input VSWR 1 (nominal)		1.5:1	*2
Pattern (F1)		Omni	
Frequency Range 2 (F2)	MHz	694 to 2700	*3
Gain F2 (typ)	dBd (dBi)	unity (2.1)	
Input VSWR 2 (nominal)		1.5:1	*4
Pattern (F2)		Omni	
Frequency Range 3 (F3)	MHz	2400 to 6000	
Gain F3 (typ)	dBd (dBi)	unity (2.1)	
Input VSWR 3 (nominal)		1.5:1	*5
Pattern (F3)		Omni	
Polarization		vertical	
Impedance	Ω	50	
Pattern		Directional	
Average Power Input (max)	W	5~200	*6
Connectors		Cell=SMA Mx2,WiFi=SMA Mx1,GPS=BNC Mx1	
Lightning protection		DC ground	*7
GPS Center Frequency	MHz	1575.42	
GPS Power Gain (typ)	dB	28	
GPS Supply Voltage Range	VDC	3 to 5	
GPS Current Consumption		12mA	
GPS Output Impedance	Ω	50	
GPS Noise Figure (max)	dB	2	
GPS VSWR		2:1 max	

Notes

- *1 : BW=2006MHz
- *2 : Max 2:1 at frequency band edges
- *3 : BW=2006MHz
- *4 : Max 2:1 at frequency band edges
- *5 : Max 2:1 at frequency band edges
- *6 : 200W for all the cell ports.
- *7 : Exclude WiFi port

Ordering Information

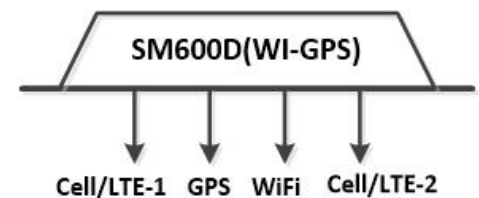
Specify connector options at time of order.

Mechanical Specifications

Height	in (mm)	4.25 (108)
Length	in (mm)	20.88 (530)
Width	in (mm)	11.5 (292)
Radome material		UV protected ABS
Weight	lbs (kg)	12.3 (5.58)
Actual Shipping weight	lbs (kg)	16.3 (7.4)
Shipping dimensions	in (mm)	23x14x10 (584x356x254)
Radome Colour		Black

Environmental Specifications

Horizontal Wind Resistance		5.03lb@100mph
Temperature range	°F (°C)	-40 to +140 (-40 to +60)
Wind Loading Area (Flat Plate Equivalent)	ft² (m²)	0.02 (0)



Region	United States	Europe, Middle East and Africa	Caribbean and Latin America	Canada and rest of the world
Telephone	USA: 1 800 263 3275	International: +44 (0) 1487 84 28 19	International: +1 905 726 7676	Canada: 1 800 263 3275 International: +1 905 727 0165
E-mail	salesusa@sinctech.com	salesuk@sinctech.com	salesla@sinctech.com	salescan@sinctech.com