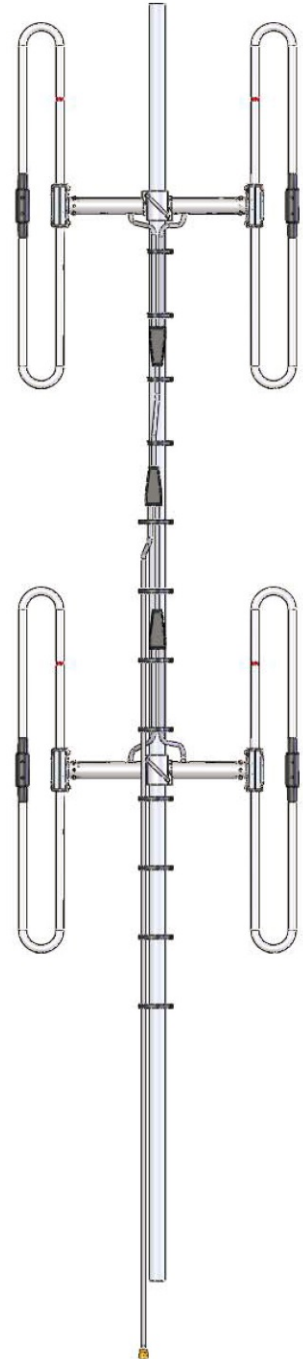


SD6035 Comshell antenna, 4.8 dBd, 138-174 MHz

Also referred as: SRL6035

- Sinclair's SD6035 antenna is intended for use inside the "Comshell" only. It is not intended for use outdoor.



www.sinctech.com

Region	United States	Europe, Middle East and Africa	Caribbean and Latin America	Canada and rest of the world
Telephone	USA: 1 800 263 3275	International: +44 (0) 1487 84 28 19	International: +1 905 726 7676	Canada: 1 800 263 3275 International: +1 905 727 0165
E-mail	salesusa@sinctech.com	salesuk@sinctech.com	salesla@sinctech.com	salescan@sinctech.com

Electrical Specifications

Frequency Range	MHz	138 to 174
Bandwidth	MHz	36
Gain (nominal)	dBd (dBi)	4.8 (6.9)
VSWR (max)		2:1
Polarization		vertical
Impedance	Ω	50
Input Connectors		N-Male
Power Rating	W	250

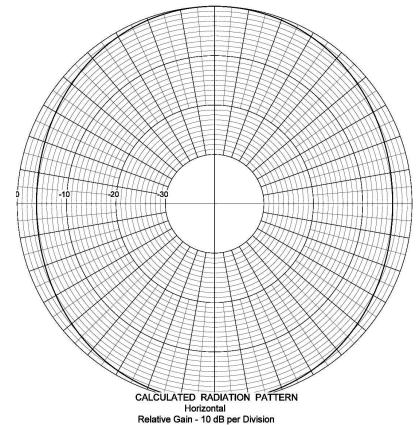
Notes

*1 : Qty 2 required

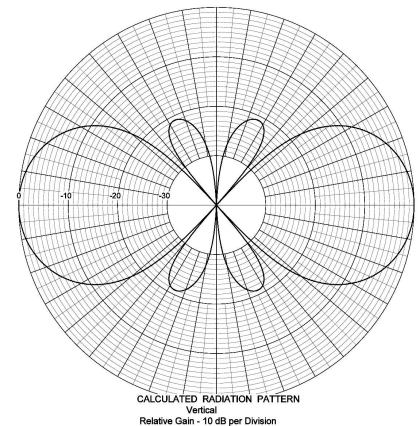
Mechanical Specifications

Depth	in (mm)	5 (127)
Length/ Height	in (mm)	120 (3048)
Width	in (mm)	25.63 (651)
Weight	lbs (kg)	18 (8.17)
Mounting hardware		W108 clamps *1

SINCLAIR TECHNOLOGIES



SINCLAIR TECHNOLOGIES



Region	United States	Europe, Middle East and Africa	Caribbean and Latin America	Canada and rest of the world
Telephone	USA: 1 800 263 3275	International: +44 (0) 1487 84 28 19	International: +1 905 726 7676	Canada: 1 800 263 3275 International: +1 905 727 0165
E-mail	salesusa@sinctech.com	salesuk@sinctech.com	salesla@sinctech.com	salescan@sinctech.com