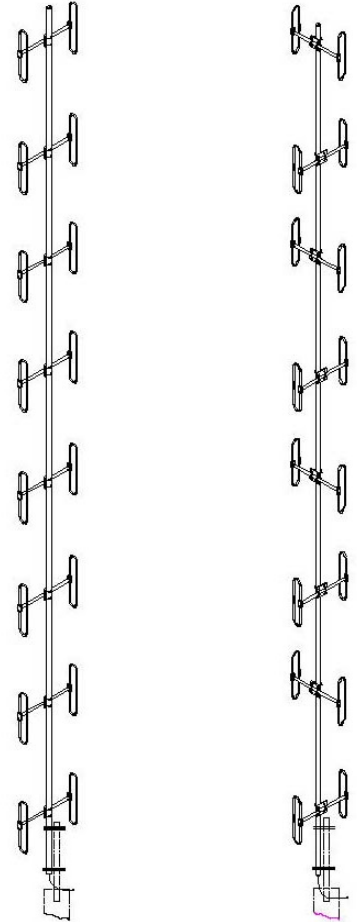


SD3354-SF1PASNM(D00B) Exposed dipole, 9/11 dBd, field adj, N-Male, 406-512 MHz

- Broadband antenna featuring omni-directional or bi-directional pattern coverage
- Ideally suited for use in multicoupled systems
- Top mount

The SD3354 is a highly versatile broadband antenna featuring omni-directional or bi-directional pattern coverage. The pattern may be easily changed in the field. Because the SD3354 covers the entire 406-512 MHz it is ideally suited for use in multicoupled systems.



Bi-directional

Omni

Antenna may not appear exactly as picture.

Region	United States	Europe, Middle East and Africa	Caribbean and Latin America	Canada and rest of the world
Telephone	USA: 1 800 263 3275	International: +44 (0) 1487 84 28 19	International: +1 905 726 7676	Canada: 1 800 263 3275 International: +1 905 727 0165
E-mail	salesusa@sinctech.com	salesuk@sinctech.com	salesla@sinctech.com	salescan@sinctech.com

Electrical Specifications

Frequency Range	MHz	406 to 512	
Connector		N-Male	*1
Gain (nominal)	dBd (dBi)	11 (13.1)	*2
Input VSWR (max)		1.5:1	
Polarization		vertical	
Impedance	Ω	50	
Pattern		Omni or Bi-directional, Adjustable	
Vertical beamwidth (typ)	degrees	8	
Average Power Input (max)	W	150	
Lightning protection		DC ground	

Notes

- *1 : Optional:N-Female
- *2 : 9 for omni
- *3 : Qty 2

Mechanical Specifications

Width	in (mm)	13.75 (349)	
Depth	in (mm)	13.75 (349)	
Length/ Height	in (mm)	220 (5588)	
Base pipe diameter	in (mm)	2.88 (73)	
Base pipe mounting length	in (mm)	36 (914)	
Radiating element material		aluminum	
Base pipe material		aluminum	
Weight	lbs (kg)	81.4 (36.96)	
Weight iced (1/2" ice)	lbs (kg)	158 (71.73)	
Mounting Hardware (Included)		Clamp147	*3
Mounting configurations		top mount	

Environmental Specifications

Temperature range	°F (°C)	-40 to +140 (-40 to +60)
Wind Loading Area (Flat Plate Equivalent)	ft² (m²)	4.82 (0.45)
Wind Loading Area (1/2" ice)	ft² (m²)	7.39 (0.69)
Rated wind velocity (no ice)	mph (km/h)	145 (233)
Rated wind velocity (1/2" radial ice)	mph (km/h)	105 (169)
Lateral Thrust (100 mph No Ice)	lbs (N)	160 (711.7)
Bending moment (100 mph No Ice)	ft-lbs (Nm)	1083 (1462.1)
Tip deflection (100 mph No Ice)	degrees	1.3

Region	United States	Europe, Middle East and Africa	Caribbean and Latin America	Canada and rest of the world
Telephone	USA: 1 800 263 3275	International: +44 (0) 1487 84 28 19	International: +1 905 726 7676	Canada: 1 800 263 3275 International: +1 905 727 0165
E-mail	salesusa@sinctech.com	salesuk@sinctech.com	salesla@sinctech.com	salescan@sinctech.com