

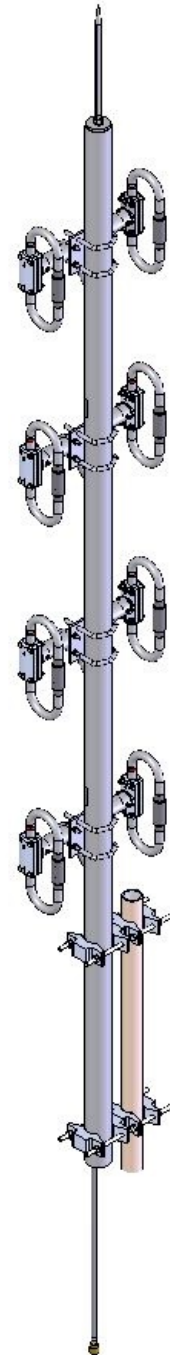
SD3352-HF1PASNM(DXXB-LS) Exposed dipole, 6/8.5 dBd, HD, field adj, N-Male, LS, 406-512 MHz

- 6.0 dBd gain in Omni-directional configuration; 8.5 dBd gain in bi-directional configuration
- Broadband covering entire 406-512 MHz frequency range
- 300 Watts power handling, top mount, lightning spike equipped
- Electrical down tilt available

The SD3352-H is a highly versatile broadband antenna featuring omni-directional or bi-directional pattern coverage. The pattern may be easily changed in the field. Because the SD3352 covers the entire 406-512 MHz, it is ideally suited for use in multicoupled systems. Heavier duty and/or higher power rated models are available on special order.

When ordering, please refer to the chart below for the model number. Downtilt configurations are subject to various list price. Please contact your Sinclair Sales Representative or Customer Service Representative for more information.

Model Number	Downtilt
SD3352-HF1PASNM(D00B-LS)	0°
SD3352-HF1PASNM(D02B-LS)	2°
SD3352-HF1PASNM(D04B-LS)	4°
SD3352-HF1PASNM(D06B-LS)	6°



Omni configuration shown, mounting pole not supplied.

Region	United States	Europe, Middle East and Africa	Caribbean and Latin America	Canada and rest of the world
Telephone	USA: 1 800 263 3275	International: +44 (0) 1487 84 28 19	International: +1 905 726 7676	Canada: 1 800 263 3275 International: +1 905 727 0165
E-mail	salesusa@sinctech.com	salesuk@sinctech.com	salesla@sinctech.com	salescan@sinctech.com

Electrical Specifications

Frequency Range	MHz	406 to 512	
Connector		N-Male	*1
Gain (nominal)	dBd (dBi)	8.5 (10.6)	*2
Input VSWR (max)		1.5:1	
Polarization		vertical	
Impedance	Ω	50	
Pattern		Omni or Bi-directional, Adjustable	
Vertical beamwidth (typ)	degrees	15	
Average Power Input (max)	W	300	
Lightning protection		DC ground, lightning spike	
Electrical tilt (available)		0, 2, 4, or 6 degrees	

Notes

- *1 : N-Female optional
- *2 : 6 for omni
- *3 : Qty 2

Mechanical Specifications

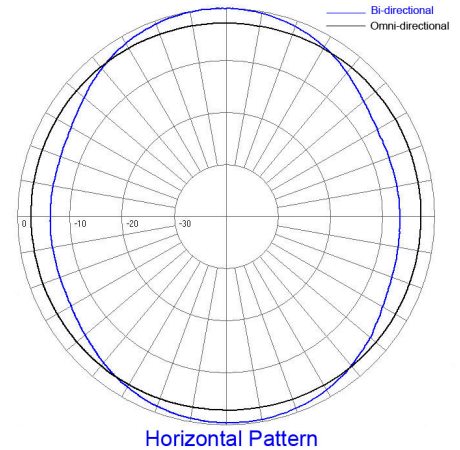
Width	in (mm)	12.75 (324)	
Depth	in (mm)	12.75 (324)	
Length/ Height	in (mm)	126 (3200)	
Base pipe diameter	in (mm)	2.38 (60)	
Base pipe mounting length	in (mm)	24 (610)	
Radiating element material		aluminum	
Base pipe material		aluminum	
Weight	lbs (kg)	26 (11.8)	
Weight iced (1/2" ice)	lbs (kg)	64 (29.06)	
Mounting Hardware (Included)		Clamp130	*3
Actual shipping weight	lbs (kg)	41 (18.61)	
Shipping dimensions	in (mm)	120x18x12 (3048x457x305)	
Mounting configurations		top mount	

Environmental Specifications

Temperature range	°F (°C)	-40 to +140 (-40 to +60)	
Wind Loading Area (Flat Plate Equivalent)	ft² (m²)	2.12 (0.2)	
Wind Loading Area (1/2" ice)	ft² (m²)	3.62 (0.34)	
Rated wind velocity (no ice)	mph (km/h)	180 (290)	
Rated wind velocity (1/2" radial ice)	mph (km/h)	150 (242)	
Lateral thrust (100 mph No Ice)	lbs (N)	77 (342.5)	
Bending moment (100 mph No Ice)	ft-lbs (Nm)	255 (344.3)	
Tip deflection (100 mph No Ice)	degrees	0.5	

Ordering Information

When ordering, please refer to the model list on the previous page for specific model numbers and downtilt configurations.



Region	United States	Europe, Middle East and Africa	Caribbean and Latin America	Canada and rest of the world
Telephone	USA: 1 800 263 3275	International: +44 (0) 1487 84 28 19	International: +1 905 726 7676	Canada: 1 800 263 3275 International: +1 905 727 0165
E-mail	salesusa@sinctech.com	salesuk@sinctech.com	salesla@sinctech.com	salescan@sinctech.com