

SD314D-SF2P2SNM(D00)

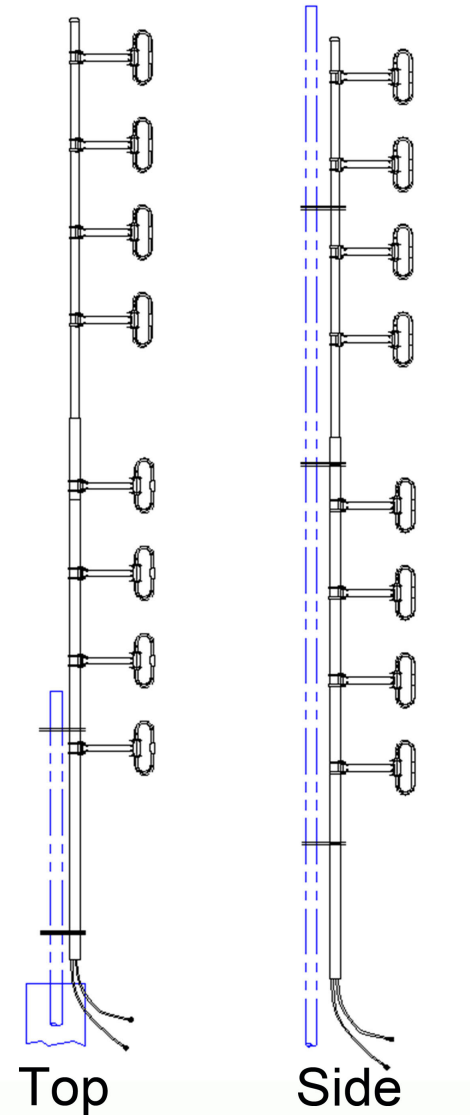
Dual port, 4 dipole, 8.0 dBd, bi-directional, 406-512 MHz

Also referred as: SRL310C4/310C4-NM*2-2

- Covers the entire 406-512 MHz frequency range
- 8.0 dBd gain with bi-directional pattern
- 300W power handling with two feed cables
- Universal Mount

The SD314D series is an 8-bay exposed dipole antenna with two separate feed cables, designed for applications where moderate gain is required. These premium-quality antennas are well suited to public safety applications.

The standard connector offer end is N male which is terminated on a 1 foot cable.



Top

Side

Region	United States	Europe, Middle East and Africa	Caribbean and Latin America	Canada and rest of the world
Telephone	USA: 1 800 263 3275	International: +44 (0) 1487 84 28 19	International: +1 905 726 7676	Canada: 1 800 263 3275 International: +1 905 727 0165
E-mail	salesusa@sinctech.com	salesuk@sinctech.com	salesla@sinctech.com	salescan@sinctech.com

Electrical Specifications

Frequency Range	MHz	406 to 512
Connector		N-Male
Gain (nominal)	dBd (dBi)	8 (10.1)
VSWR (max)		1.5:1
Polarization		vertical
Pattern		Bi-directional
Vertical beamwidth (typ)	degrees	16
Average Power Input (max)	W	300
Isolation port to port	dB	35
Lightning protection		DC ground
Electrical tilt (available)		0, 2, 4, or 6 degrees

Notes

- *1 : 150 Watts at 60 deg.
- *2 : Values based on 100mph and 0 inches of ice.
- *3 : Values based on 100mph and 0 inches of ice.
- *4 : Values based on 100mph and 0 inches of ice.

Mechanical Specifications

Width	in (mm)	16.75 (425)
Depth	in (mm)	3.5 (89)
Length/ Height	in (mm)	203 (5156)
Base pipe diameter	in (mm)	2.38 (60)
Base pipe mounting length	in (mm)	36 (914)
Radiating element material		aluminum
Reflector material		aluminum
Weight	lbs (kg)	42 (19.07)
Weight iced (1/2" ice)	lbs (kg)	97 (44.04)
Mounting Hardware (Optional)		Clamp005, Clamp015, Clamp130, or Clamp125U
Shipping Length/ Height	in (mm)	216 (5486)
Estimated Shipping Weight	lbs (kg)	62 (28.15)
Shipping dimensions	in (mm)	216x24x6 (5486x610x152)
Mounting configurations		Universal Mount

Ordering Information

Clamps must be ordered separately.

Environmental Specifications

Temperature range	°F (°C)	-40 to +140 (-40 to +60)
Wind Loading Area (Flat Plate Equivalent)	ft ² (m ²)	3.51 (0.33)
Wind Loading Area (1/2" ice)	ft ² (m ²)	5.91 (0.55)
Rated wind velocity (no ice)	mph (km/h)	135 (217)
Rated wind velocity (1/2" radial ice)	mph (km/h)	95 (153)
Lateral thrust (100 mph No Ice)	lbs (N)	114 (507.1)
Torsional moment (100 mph No Ice)	ft-lbs (Nm)	46 (62.1)
Bending moment (100 mph No Ice)	ft-lbs (Nm)	667 (900.5)
Tip deflection (100 mph No Ice)	degrees	0.43

Region	United States	Europe, Middle East and Africa	Caribbean and Latin America	Canada and rest of the world
Telephone	USA: 1 800 263 3275	International: +44 (0) 1487 84 28 19	International: +1 905 726 7676	Canada: 1 800 263 3275 International: +1 905 727 0165
E-mail	salesusa@sinctech.com	salesuk@sinctech.com	salesla@sinctech.com	salescan@sinctech.com