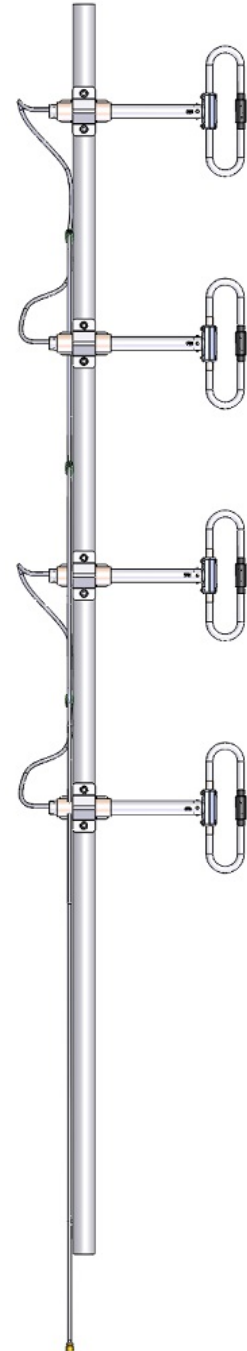


SD314-HF2PASNM(D00-E6649) 4 dipole, 6-9 dBd, HD, 470-550 MHz

- Field adjustable pattern: offset, bi-directional, omni
- 6-9 dBd gain
- 500 Watts power handling

SD314-HF2PASNM(D00-E6649) is an extremely rugged 4-bay exposed dipole antenna designed for applications in the 470-550 MHz range where moderate gain is required. Featured with field adjustable pattern, this premium-quality antennas is well suited to public safety applications where flexible coverage is needed.



www.sinctech.com

Region	United States	Europe, Middle East and Africa	Caribbean and Latin America	Canada and rest of the world
Telephone	USA: 1 800 263 3275	International: +44 (0) 1487 84 28 19	International: +1 905 726 7676	Canada: 1 800 263 3275 International: +1 905 727 0165
E-mail	salesusa@sinctech.com	salesuk@sinctech.com	salesla@sinctech.com	salescan@sinctech.com
Product Specification Sheet		SD314-HF2PASNM(D00-E6649)	Issue: 0	Dated: 28-06-18

Electrical Specifications

Frequency Range	MHz	470 to 550	
Connector		N-Male	
Gain (nominal)	dBd (dBi)	9 (11.1)	*1
Input VSWR (max)		1.5:1	
Polarization		vertical	
Impedance	Ω	50	
Pattern		Offset/ Bi-directional	*2
Horizontal beamwidth (typ)	degrees	210	*3
Vertical beamwidth (typ)	degrees	17	
Average Input Power (max)	W	500	
Lightning protection		DC ground	

Notes

- *1 : 9 dBd for offset and bi-directional; 8.5 for cardioid; 6dBd for omni.
- *2 : Field adjustable, offset, cardioid, bi-directional or omni.
- *3 : For offset
- *4 : Qty: 2

Mechanical Specifications

Width	in (mm)	19 (483)	
Depth	in (mm)	3 (76)	
Length/ Height	in (mm)	100 (2540)	
Base pipe diameter	in (mm)	2.38 (60)	
Base pipe mounting length	in (mm)	24 (610)	
Radiating element material		aluminum	
Base pipe material		aluminum	
Weight	lbs (kg)	20 (9.08)	
Weight iced (1/2" ice)	lbs (kg)	45 (20.43)	
Mounting Hardware (Included)		Clamp005	*4
Recommended For Offset Side Mount:		SMK-125-A3	
Mounting configurations		Universal Mount	
Estimated Shipping Weight	lbs (kg)	35 (15.89)	
Shipping dimensions	in (mm)	110x20x8 (2794x508x203)	

Environmental Specifications

Temperature range	°F (°C)	-40 to +158 (-40 to +70)
Wind Loading Area (Flat Plate Equivalent)	ft ² (m ²)	1.8 (0.17)
Wind Loading Area (1/2" ice)	ft ² (m ²)	2.9 (0.27)
Rated wind velocity (no ice)	mph (km/h)	190 (306)
Rated wind velocity (1/2" radial ice)	mph (km/h)	150 (242)
Lateral Thrust (100 mph No Ice)	lbs (N)	74 (329.2)
Torsional moment (100 mph No Ice)	ft-lbs (Nm)	255 (344.3)
Tip deflection (100 mph No Ice)	degrees	1.2

Region	United States	Europe, Middle East and Africa	Caribbean and Latin America	Canada and rest of the world
Telephone	USA: 1 800 263 3275	International: +44 (0) 1487 84 28 19	International: +1 905 726 7676	Canada: 1 800 263 3275 International: +1 905 727 0165
E-mail	salesusa@sinctech.com	salesuk@sinctech.com	salesla@sinctech.com	salescan@sinctech.com
Product Specification Sheet		SD314-HF2PASNM(D00-E6649)	Issue: 0	Dated: 28-06-18