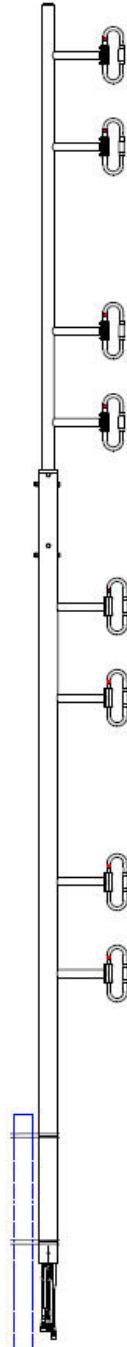


SD312Q-HF2P2SNM(D00B-SM) 2 dipole, 4.8 dBd, quad ports, bi-directional, HD, 406-512 MHz

- 4.8 dBd gain with bi-directional pattern
- Heavy duty with 150W power handling
- Four feed cables
- Split Mast

The SD312Q series is an extremely rugged quad fed, 2-bay exposed dipole antenna designed for applications where moderate gain is required and multiple antennas are not feasible. These premium-quality antennas are well suited to public safety applications. This single unit offers the user four antennas, each with 30 dB of port-to-port isolation.



www.sinctech.com

Region	United States	Europe, Middle East and Africa	Caribbean and Latin America	Canada and rest of the world
Telephone	USA: 1 800 263 3275	International: +44 (0) 1487 84 28 19	International: +1 905 726 7676	Canada: 1 800 263 3275 International: +1 905 727 0165
E-mail	salesusa@sinctech.com	salesuk@sinctech.com	salesla@sinctech.com	salescan@sinctech.com

Electrical Specifications

Frequency Range	MHz	406 to 512
Connector		N-Male
Gain (nominal)	dBd (dBi)	4.8 (6.9)
VSWR (max)		1.5:1
Polarization		vertical
Impedance	Ω	50
Pattern		Bi- directional
Vertical beamwidth (typ)	degrees	36
Average Power Input (max)	W	150
Isolation port to port	dB	30
Lightning protection		DC ground

Mechanical Specifications

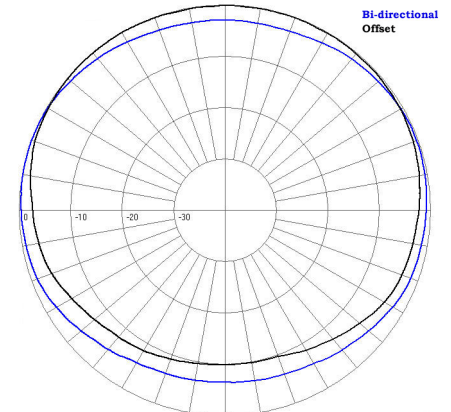
Width	in (mm)	15.75 (400)
Depth	in (mm)	4 (102)
Length/ Height	in (mm)	270 (6858)
Base pipe diameter	in (mm)	4 (102)
Base pipe mounting length	in (mm)	48 (1219)
Radiating element material		aluminum
Reflector material		aluminum
Weight	lbs (kg)	101 (45.85)
Weight iced (1/2" ice)	lbs (kg)	185 (83.99)
Mounting Hardware (Optional)		Clamp006B
Estimated Shipping Weight	lbs (kg)	154 (69.92)
Shipping dimensions	in (mm)	186x18x6 (4724x457x152)
Mounting configurations		top mount

Environmental Specifications

Temperature range	°F (°C)	-40 to +140 (-40 to +60)
Wind Loading Area (Flat Plate Equivalent)	ft² (m²)	5.78 (0.54)
Wind Loading Area (1/2" ice)	ft² (m²)	8.44 (0.78)
Rated wind velocity (no ice)	mph (km/h)	185 (298)
Rated wind velocity (1/2" radial ice)	mph (km/h)	150 (242)
Lateral thrust (100 mph No Ice)	lbs (N)	209 (929.6)
Torsional moment (100 mph No Ice)	ft-lbs (Nm)	41 (55.4)
Bending moment (100 mph No Ice)	ft-lbs (Nm)	1327 (1791.5)
Tip deflection (100 mph No Ice)	degrees	0.4

Ordering Information

Clamps must be purchased separately.



Horizontal Pattern

Region	United States	Europe, Middle East and Africa	Caribbean and Latin America	Canada and rest of the world
Telephone	USA: 1 800 263 3275	International: +44 (0) 1487 84 28 19	International: +1 905 726 7676	Canada: 1 800 263 3275 International: +1 905 727 0165
E-mail	salesusa@sinctech.com	salesuk@sinctech.com	salesla@sinctech.com	salescan@sinctech.com