

SD242-SF2P2LDF(DXX) 2 dipole, 5 dBd, bi-directional, low PIM, 138-174 MHz

Also referred as: SD212E-SF2P2LDF(DXX)

- 2-bay dipole antenna that covers the 138-174 MHz band
- 5 dBd gain with bi-directional pattern
- 300W power handling
- Can be top or side mounted (Universal Mount)

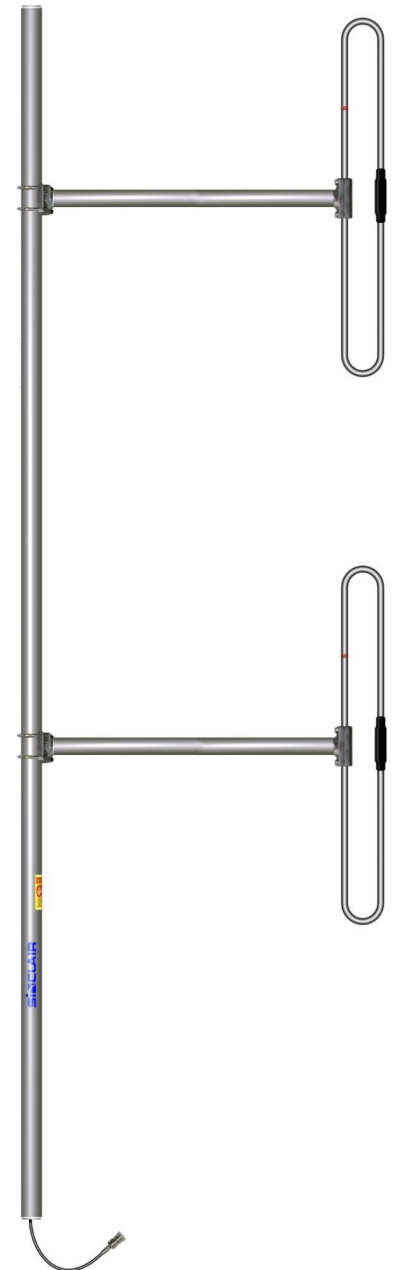
The SD242-L series is an extremely rugged 2-bay exposed dipole antenna designed for applications where moderate gain is required and Passive Intermodulation interference (PIM) is a consideration. These premium-quality antennas are well suited for public safety applications.

The SD242-L provides industry-leading -150 dBc Passive Intermodulation (PIM) performance.

The design of these antennas provides for coverage from 118 to 225 MHz in 3 sub-bands, the 138-174 MHz band is for private mobile networks and public safety.

When ordering, please refer to the chart below for the model number. Downtilt configurations are subject to various list prices. Please contact your Sinclair Sales Representative or Customer Service Representative for more information.

Model Number	Downtilt
SD242-SF2P2LDF(D00)	0°
SD242-SF2P2LDF(D02)	2°
SD242-SF2P2LDF(D04)	4°
SD242-SF2P2LDF(D06)	6°



www.sinctech.com

Region	United States	Europe, Middle East, and Africa	Canada, Caribbean, and Latin America	Asia-Pacific
Telephone	1 800 263 3275	+44 (0) 1487 84 28 19	Canada: 1 800 263 3275 International: +1 905 726 7676	+1 905 727 0165
E-mail	salesusa@sinctech.com	salesuk@sinctech.com	salescan@sinctech.com	salesasia@sinctech.com
Product Specification Sheet		SD242-SF2P2LDF(DXX)	Issue: 1	Dated: 07-05-21

Electrical Specifications

Frequency Range	MHz	138 to 174	
Bandwidth	MHz	36	
Connector		7/16 DIN-Female	
Gain (nominal)	dBd (dBi)	5 (7.1)	*1
Input VSWR (max)		1.5:1	
Polarization		vertical	
Impedance	Ω	50	
Pattern		Bi-directional	
Vertical beamwidth (typ)	degrees	36	*2
Average Input Power (max)	W	300	
Passive intermod. (2x20W, 3rd ord.)	dBc	-150	
Lightning protection		DC ground	
Electrical tilt (available)		0, 2, 4 or 6 degrees	

Notes

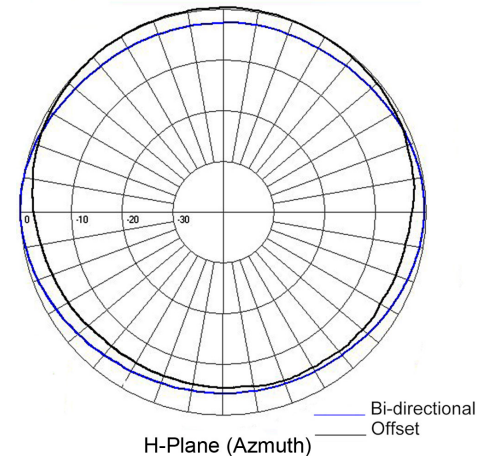
- *1 : ±1 dBd
- *2 : ±10%
- *3 : Qty: 2
- *4 : Optional, not included.

Mechanical Specifications

Width	in (mm)	40.4 (1026)	
Depth	in (mm)	3 (76)	
Length/ Height	in (mm)	120 (3048)	
Base pipe diameter	in (mm)	1.9 (48)	
Base pipe mounting length	in (mm)	34 (864)	
Radiating element material		aluminum	
Base pipe material		aluminum	
Weight	lbs (kg)	23 (10.44)	
Weight iced (1/2" ice)	lbs (kg)	55 (24.97)	
Mounting Hardware (Optional)		Clamp005, or Clamp005X	*3
Kit For Offset Side Mount (straight tower leg)		SMK-125-A3 or SMK-125-A7	*4
Mounting configurations		Universal mount	
Actual shipping weight	lbs (kg)	45 (20.43)	
Shipping dimensions	in (mm)	124x48x6 (3150x1219x152)	

Ordering Information

Clamps must be ordered separately.
When ordering, please refer to the model list on the previous page for specific model numbers and downtilt configurations.



Environmental Specifications

Temperature range	°F (°C)	-40 to +140 (-40 to +60)	
Wind Loading Area (Flat Plate Equivalent)	ft² (m²)	2.14 (0.2)	
Wind Loading Area (1/2" ice)	ft² (m²)	3.71 (0.34)	
Rated wind velocity (no ice)	mph (km/h)	140 (225)	
Rated wind velocity (1/2" radial ice)	mph (km/h)	105 (169)	
Lateral Thrust (100 mph No Ice)	lbs (N)	77 (342.5)	
Torsional moment (100 mph No Ice)	ft-lbs (Nm)	87 (117.5)	
Bending moment (100 mph No Ice)	ft-lbs (Nm)	247 (333.5)	
Tip deflection (100 mph No Ice)	degrees	1.2	

Region	United States	Europe, Middle East, and Africa	Canada, Caribbean, and Latin America	Asia-Pacific
Telephone	1 800 263 3275	+44 (0) 1487 84 28 19	Canada: 1 800 263 3275 International: +1 905 726 7676	+1 905 727 0165
E-mail	salesusa@sinctech.com	salesuk@sinctech.com	salescan@sinctech.com	salesasia@sinctech.com
Product Specification Sheet		SD242-SF2P2LDF(DXX)	Issue: 1	Dated: 07-05-21