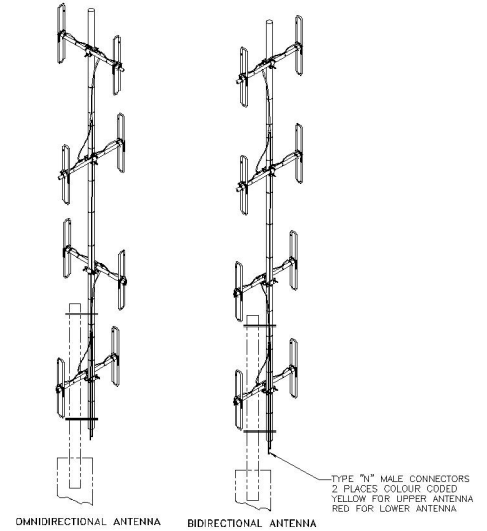


**SD235D-SF2PASNM(D00B)** Exposed dipole array, 3/5.5 dBd, dual, field adj., 138-174 MHz

Also referred as: SRL235/235NM\*2

- A broadband dual antenna perfectly suited for multicoupled systems
- Field adjustable 3 dBd Omni-directional or 5.5 dBd bi-directional pattern
- Low PIM and heavy duty models available

The SD235D is a highly versatile broadband dual antenna featuring omni-directional or bidirectional pattern coverage. The pattern may be easily changed in the field. Because the SD235D covers the 138-174 MHz frequency band, it is ideally suited for use in multicoupled systems. Heavier duty and/or higher power rated models are available on special order.



www.sinctech.com

Region	United States	Europe, Middle East, and Africa	Canada, Caribbean, and Latin America	Asia-Pacific
Telephone	1 800 263 3275	+44 (0) 1487 84 28 19	Canada: 1 800 263 3275 International: +1 905 726 7676	+1 905 727 0165
E-mail	salesusa@sinctech.com	salesuk@sinctech.com	salescan@sinctech.com	salesasia@sinctech.com

Product Specification Sheet  
EPR 017545

SD235D-SF2PASNM(D00B)

Issue: 3

Dated: 11-09-20  
Dated: 30-09-13

#### Electrical Specifications

Frequency Range	MHz	138 to 174
Connector		N-Male
Input VSWR (max)		1.5:1
Polarization		vertical
Impedance	Ω	50
Pattern		Omni or Bi-directional, Adjustable
Vertical beamwidth (typ)	degrees	34
Average Input Power (max)	W	300
Isolation between sections (nom)	dB	30
Lightning protection		DC ground

#### Notes

- \*1 : Qty:2
- \*2 : 125 lbs and 40 lbs
- \*3 : 3 packages

#### Mechanical Specifications

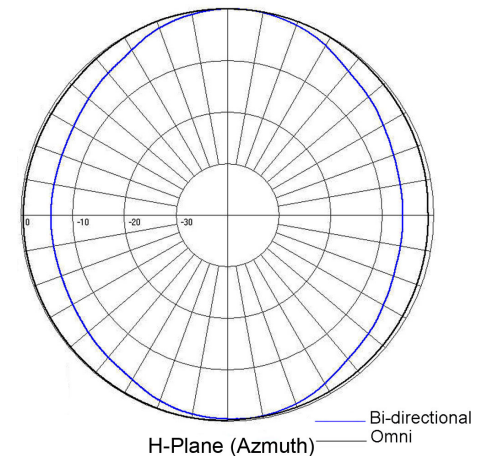
Width	in (mm)	35.5 (902)	
Depth	in (mm)	35.5 (902)	
Length/ Height	in (mm)	240 (6096)	
Base pipe diameter	in (mm)	2.88 (73)	
Radiating element material		aluminum	
Base pipe material		aluminum	
Weight	lbs (kg)	90 (40.86)	
Mounting Hardware (Optional)		Clamp147, Clamp005, or Clamp015	*1
Mounting configurations		top mount	
Actual shipping weight	lbs (kg)	165 (74.91)	*2
Shipping dimensions	in (mm)	246x42x12 (6248x1067x305)	*3

#### Ordering Information

Clamps must be ordered separately.

#### Environmental Specifications

Temperature range	°F (°C)	-40 to +140 (-40 to +60)
Wind Loading Area (Flat Plate Equivalent)	ft² (m²)	5.6 (0.52)
Wind Loading Area (1/2" ice)	ft² (m²)	9.6 (0.89)
Rated wind velocity (no ice)	mph (km/h)	125 (201)
Rated wind velocity (1/2" radial ice)	mph (km/h)	95 (153)
Lateral Thrust (100 mph No Ice)	lbs (N)	235 (1045.3)
Bending moment (100 mph No Ice)	ft-lbs (Nm)	2307 (3114.5)



Region	United States	Europe, Middle East, and Africa	Canada, Caribbean, and Latin America	Asia-Pacific
Telephone	1 800 263 3275	+44 (0) 1487 84 28 19	Canada: 1 800 263 3275 International: +1 905 726 7676	+1 905 727 0165
E-mail	salesusa@sinctech.com	salesuk@sinctech.com	salescan@sinctech.com	salesasia@sinctech.com