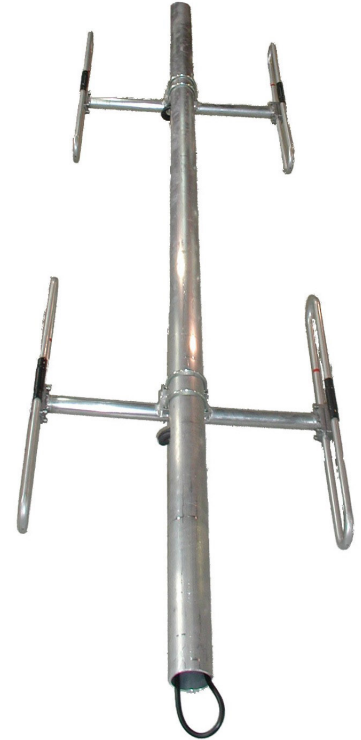


SD235-HF2PASNM(D00B) Exposed dipole array, 3/5.5 dBd, field adj., HD, 138-174 MHz

Also referred as: SD235-HF2PASNM

- Perfectly suited for multicoupled systems due to its broad band performance
- Field adjustable to allow for either omnidirectional or bidirectional pattern
- Low PIM models are also available

The SD235 is a highly versatile broadband antenna featuring omnidirectional or bidirectional pattern coverage. The pattern may be easily changed in the field. Because the SD235 covers the entire 118-174 MHz frequency band, it is ideally suited for use in multicoupled systems.



www.sinctech.com

| Region           | United States         | Europe, Middle East and Africa       | Caribbean and Latin America    | Canada and rest of the world                             |
|------------------|-----------------------|--------------------------------------|--------------------------------|--|
| <b>Telephone</b> | USA: 1 800 263 3275   | International: +44 (0) 1487 84 28 19 | International: +1 905 726 7676 | Canada: 1 800 263 3275<br>International: +1 905 727 0165 |
| <b>E-mail</b>    | salesusa@sinctech.com | salesuk@sinctech.com                 | salesla@sinctech.com           | salescan@sinctech.com                                    |

Product Specification Sheet  
EPR 015947

SD235-HF2PASNM(D00B)

Issue: 16

Dated: 14-12-16  
Dated: 05-01-15

### Electrical Specifications

|                           |         |                                    |
|---------------------------|---------|------------------------------------|
| Frequency Range           | MHz     | 138 to 174                         |
| Connector                 |         | N-Male                             |
| Input VSWR (max)          |         | 1.5:1                              |
| Polarization              |         | vertical                           |
| Impedance                 | Ω       | 50                                 |
| Pattern                   |         | Omni or Bi-directional, Adjustable |
| Vertical beamwidth (typ)  | degrees | 36                                 |
| Average Power Input (max) | W       | 300                                |
| Lightning protection      |         | DC ground                          |

### Mechanical Specifications

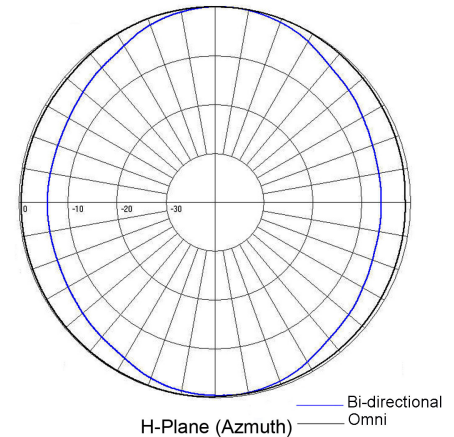
|                              |          |                          |
|------------------------------|----------|--------------------------|
| Width                        | in (mm)  | 29.12 (740)              |
| Depth                        | in (mm)  | 29.12 (740)              |
| Length/ Height               | in (mm)  | 168 (4267)               |
| Base pipe diameter           | in (mm)  | 2.88 (73)                |
| Base pipe mounting length    | in (mm)  | 48 (1219)                |
| Radiating element material   |          | aluminum                 |
| Reflector material           |          | aluminum                 |
| Weight                       | lbs (kg) | 55 (24.97)               |
| Weight iced (1/2" ice)       | lbs (kg) | 113 (51.3)               |
| Mounting Hardware (Optional) |          | Clamp006A or Clamp015    |
| Actual shipping weight       | lbs (kg) | 95 (43.13)               |
| Shipping dimensions          | in (mm)  | 174x12x12 (4420x305x305) |
| Mounting configurations      |          | top mount                |

### Environmental Specifications

|   |             |                          |
|---|-------------|--------------------------|
| Temperature range                         | °F (°C)     | -40 to +140 (-40 to +60) |
| Wind Loading Area (Flat Plate Equivalent) | ft² (m²)    | 4 (0.37)                 |
| Wind Loading Area (1/2" ice)              | ft² (m²)    | 6.42 (0.6)               |
| Rated wind velocity (no ice)              | mph (km/h)  | 175 (282)                |
| Rated wind velocity (1/2" radial ice)     | mph (km/h)  | 150 (242)                |
| Lateral thrust (100 mph No Ice)           | lbs (N)     | 133 (591.6)              |
| Bending moment (100 mph No Ice)           | ft-lbs (Nm) | 554 (747.9)              |

### Ordering Information

Clamps must be ordered separately.



| Region    | United States         | Europe, Middle East and Africa       | Caribbean and Latin America    | Canada and rest of the world                             |
|-----------|-----------------------|--------------------------------------|--------------------------------|--|
| Telephone | USA: 1 800 263 3275   | International: +44 (0) 1487 84 28 19 | International: +1 905 726 7676 | Canada: 1 800 263 3275<br>International: +1 905 727 0165 |
| E-mail    | salesusa@sinctech.com | salesuk@sinctech.com                 | salesla@sinctech.com           | salescan@sinctech.com                                    |