

SD218-SF1P4SNM(D00S) 8 dipole, 11.5 dBd, offset, 118-138 MHz

- 11.5 dBd gain with offset pattern
- Cover 118-138 MHz
- 300 watts power handling
- Two segment design for easy transport and installation

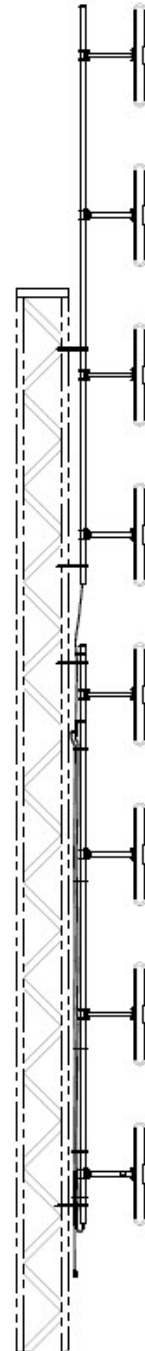
The SD218 series of antennas is unique in its high efficiency and exceptionally wide bandwidth, covering the frequency ranges of 118-138 MHz, 138-174 MHz or 220-222 MHz at a VSWR of 1.5:1 or better. Because of its bandwidth and very low intermodulation response, the SD218 series is perfectly suited for multicoupled systems.

Two model variants of this rugged antenna are available: the SD218A with external cable harness enabling its pattern to be changed in the field; and the SD218, which cannot be adjusted in the field as the cable harness is inside the mast and dipole booms. This version is available in either quarter-wave or half-wave dipole-to-mast spacing.

Heavier duty and/or higher power ratings are available on special order.

The SD218 is an 8-bay version incorporating all the features of the basic model into a high gain and wide coverage antenna needed in certain system applications.

Site specific mounting hardware is necessary with these antennas. Please consult Sinclair to determine suitable clamps for your application. Heavy duty versions of this antenna are also available.



Region	United States	Europe, Middle East and Africa	Caribbean and Latin America	Canada and rest of the world
Telephone	USA: 1 800 263 3275	International: +44 (0) 1487 84 28 19	International: +1 905 726 7676	Canada: 1 800 263 3275 International: +1 905 727 0165
E-mail	salesusa@sinclaire.com	salesuk@sinclaire.com	salesla@sinclaire.com	salescan@sinclaire.com
Product Specification Sheet EPR 016867		SD218-SF1P4SNM(D00S)	Issue: 2	Dated: 14-12-16 Dated: 30-11-11

Electrical Specifications

Frequency Range	MHz	118 to 138
Connector		N-Male
Gain (nominal)	dBd (dBi)	11.5 (13.6)
Input VSWR (max)		1.5:1
Polarization		vertical
Pattern		Offset
Horizontal beamwidth (typ)	degrees	210
Vertical beamwidth (typ)	degrees	8
Average Power Input (max)	W	300
Lightning protection		DC ground
Electrical tilt (available)		0, 2, 4, or 6 degrees

Mechanical Specifications

Width	in (mm)	27 (686)
Depth	in (mm)	4 (102)
Length/ Height	in (mm)	499 (12675)
Base pipe diameter	in (mm)	2.38 (60)
Base pipe mounting length	in (mm)	228 (5791) *1
Weight	lbs (kg)	111 (50.39)
Mounting Hardware (Optional)		Clamp147, Clamp015, or Clamp130 *2
Actual shipping weight	lbs (kg)	171 (77.63)
Shipping dimensions	in (mm)	244x30x6 (6198x762x152) *3
Mounting configurations		side mount

Environmental Specifications

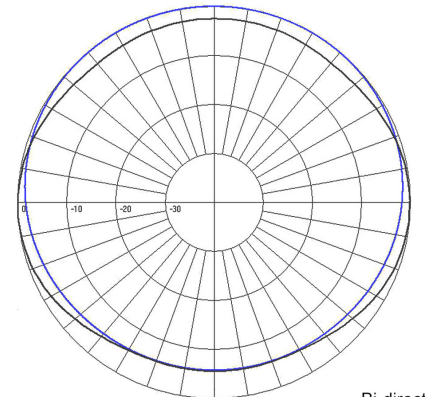
Temperature range	°F (°C)	-40 to +140 (-40 to +60)
Wind Loading Area (Flat Plate Equivalent)	ft² (m²)	8.5 (0.79)
Wind Loading Area (1/2" ice)	ft² (m²)	14.9 (1.38)
Rated wind velocity (no ice)	mph (km/h)	135 (217)
Rated wind velocity (1/2" radial ice)	mph (km/h)	95 (153)
Lateral thrust (100 mph No Ice)	lbs (N)	319 (1418.9)
Torsional moment (100 mph No Ice)	ft-lbs (Nm)	201 (271.4)
Bending moment (100 mph No Ice)	ft-lbs (Nm)	833 (1124.6) *4
Tip deflection (100 mph No Ice)	degrees	2.6 *5

Notes

- *1 : For bottom antenna. 72" for top antenna.
- *2 : Qty 4
- *3 : 2 packages
- *4 : Top Antenna
- *5 : Top Antenna

Ordering Information

Clamps must be ordered separately.



H-Plane (Azimuth) — Bi-directional — Offset

Region	United States	Europe, Middle East and Africa	Caribbean and Latin America	Canada and rest of the world
Telephone	USA: 1 800 263 3275	International: +44 (0) 1487 84 28 19	International: +1 905 726 7676	Canada: 1 800 263 3275 International: +1 905 727 0165
E-mail	salesusa@sinctech.com	salesuk@sinctech.com	salesla@sinctech.com	salescan@sinctech.com