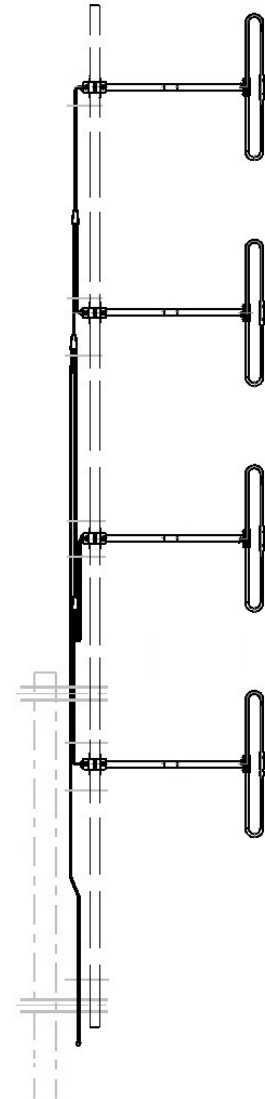


SD214-SF3PASNM(D00-LM) 4 dipole, 8/8.5 dBd, field adjustable, 195-245 MHz

- Field adjustable to allow for either Bi-directional or Offset pattern
- 8.0 dBd in bi-directional configuration, 8.5 dBd gain in offset configuration
- 300 watt power handling
- Mast not included

The SD214 series is a rugged 4-bay exposed dipole antenna designed for applications where moderate gain is required. These premium-quality antennas are well suited to public safety applications.

Mast not included.



Mast not included

www.sincltech.com

Region	United States	Europe, Middle East and Africa	Caribbean and Latin America	Canada and rest of the world
<b>Telephone</b>	USA: 1 800 263 3275	International: +44 (0) 1487 84 28 19	International: +1 905 726 7676	Canada: 1 800 263 3275 International: +1 905 727 0165
<b>E-mail</b>	salesusa@sincltech.com	salesuk@sincltech.com	salesla@sincltech.com	salescan@sincltech.com

#### Electrical Specifications

Frequency Range	MHz	195 to 245	
Connector		N-Male	
Gain (nominal)	dBd (dBi)	8.5 (10.6)	*1
Input VSWR (max)		1.5:1	
Polarization		vertical	
Impedance	Ω	50	
Pattern		Offset or Bi-directional	
Horizontal beamwidth (typ)	degrees	210	*2
Vertical beamwidth (typ)	degrees	17	
Average Input Power (max)	W	300	
Lightning protection		DC ground	

#### Notes

- \*1 : 8.0 dBd in bi-directional configuration
- \*2 : For offset configuration
- \*3 : Mast not supplied, recommend 2" IPS (40), 180 inch length of pipe.
- \*4 : Excluding mast
- \*5 : Excluding mast
- \*6 : Excluding mast
- \*7 : Excluding mast
- \*8 : Boom

#### Mechanical Specifications

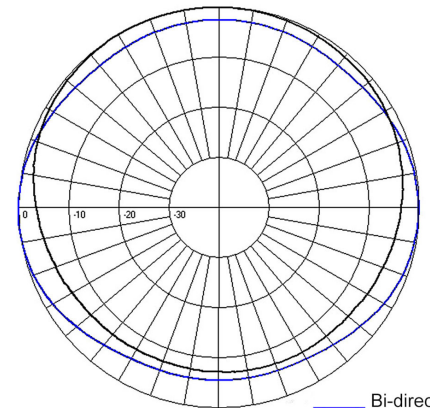
Width	in (mm)	38 (965)	
Depth	in (mm)	4 (102)	
Length/ Height	in (mm)	180 (4572)	*3
Radiating element material		aluminum	
Base pipe material		aluminum	
Weight	lbs (kg)	18 (8.17)	
Mounting configurations		Universal Mount	
Actual shipping weight	lbs (kg)	42 (19.07)	
Shipping dimensions	in (mm)	50x15x10 (1270x381x254)	

#### Ordering Information

Mast not included, mast to tower clamps must be ordered separately.

#### Environmental Specifications

Temperature range	°F (°C)	-40 to +140 (-40 to +60)	
Wind Loading Area (Flat Plate Equivalent)	ft <sup>2</sup> (m <sup>2</sup> )	1.4 (0.13)	*4
Wind Loading Area (1/2" ice)	ft <sup>2</sup> (m <sup>2</sup> )	4.8 (0.45)	*5
Rated wind velocity (no ice)	mph (km/h)	140 (225)	*6
Rated wind velocity (1/2" radial ice)	mph (km/h)	100 (161)	*7
Lateral Thrust (100 mph No Ice)	lbs (N)	31 (137.9)	
Bending moment (100 mph No Ice)	ft-lbs (Nm)	42 (56.7)	*8



H-Plane (Azimuth) — Bi-directional — Offset

Region	United States	Europe, Middle East and Africa	Caribbean and Latin America	Canada and rest of the world
<b>Telephone</b>	USA: 1 800 263 3275	International: +44 (0) 1487 84 28 19	International: +1 905 726 7676	Canada: 1 800 263 3275 International: +1 905 727 0165
<b>E-mail</b>	salesusa@sinctech.com	salesuk@sinctech.com	salesla@sinctech.com	salescan@sinctech.com