

SD212-SF3P2SNM(D00) 2 dipole, 5.0 dBd, bi-directional, 190-225 MHz

Also referred as: SRL210C2*2*220

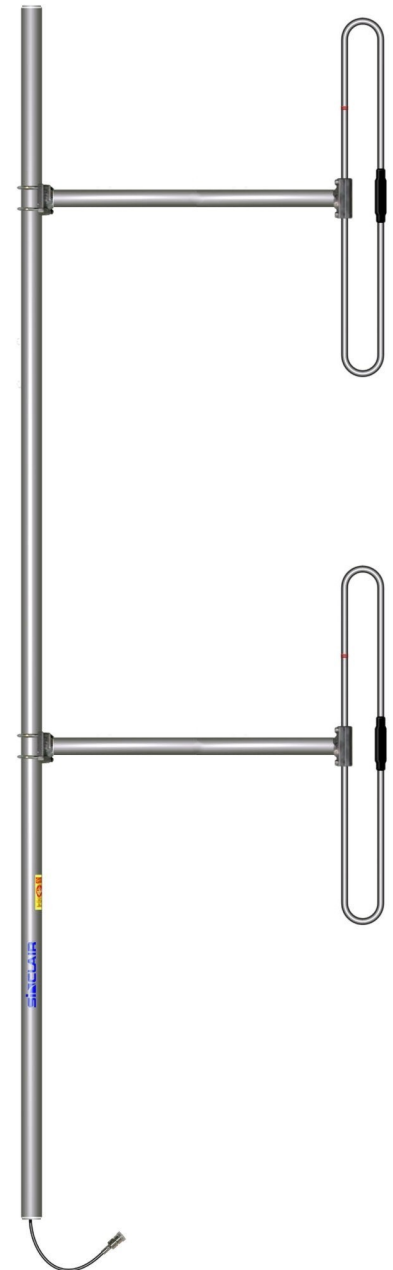
- 2-bay dipole antenna that covers the 190-225 MHz band
- 5 dBd gain with bi-directional pattern
- Can be top or side mounted (Universal mount)

**Recommend SMK-125-A3 or SMK-125-A7 for Offset Side Mount.
Available from Sinclair separately.**

The SD212 series is a 2-bay exposed dipole antenna designed for applications where moderate gain is required. These premium-quality antennas are well suited to public safety applications.

The design of these antennas provides for coverage from 118 to 225 MHz in 3 sub bands, 118-138 MHz for civil aviation applications, 138-174 MHz for private mobile networks, and public safety, and 190-225 MHz for transportation networks.

The standard connector offered is N-male which is terminated on a 1 foot cable. Also available with a N-female connector as SD212-SF3P2SNF(D00).



www.sinctech.com

Region	United States	Europe, Middle East and Africa	Caribbean and Latin America	Canada and rest of the world
Telephone	USA: 1 800 263 3275	International: +44 (0) 1487 84 28 19	International: +1 905 726 7676	Canada: 1 800 263 3275 International: +1 905 727 0165
E-mail	salesusa@sinctech.com	salesuk@sinctech.com	salesla@sinctech.com	salescan@sinctech.com

Electrical Specifications

Frequency Range	MHz	190 to 225	
Bandwidth	MHz	35	
Connector		N-Male	*1
Gain (nominal)	dBd (dBi)	5 (7.1)	
Input VSWR (max)		1.5:1	
Polarization		vertical	
Impedance	Ω	50	
Pattern		Bi-directional	
Vertical beamwidth (typ)	degrees	33	
Average Power Input (max)	W	250	
Lightning protection		DC ground	
Electrical tilt (available)		0,2,4,6,8, or 10 degrees	

Notes

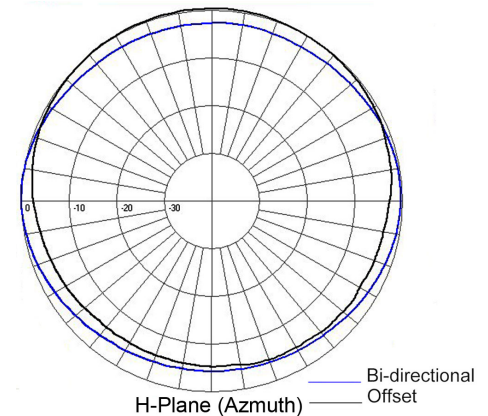
- *1 : Also available with N-Female.
- *2 : Qty 2 required

Mechanical Specifications

Width	in (mm)	30.3 (770)	
Depth	in (mm)	3 (76)	
Length/ Height	in (mm)	100 (2540)	
Base pipe diameter	in (mm)	1.9 (48)	
Base pipe mounting length	in (mm)	24 (610)	
Radiating element material		aluminum	
Base pipe material		aluminum	
Weight	lbs (kg)	20 (9.08)	
Weight iced (1/2" ice)	lbs (kg)	49 (22.25)	
Mounting Hardware (Optional)		Clamp005, Clamp015, or Clamp130	*2
Actual shipping weight	lbs (kg)	36 (16.34)	
Shipping dimensions	in (mm)	124x44x4 (3150x1118x102)	
Mounting configurations		Universal Mount	
Recommended For Offset Side Mount:		SMK-125-A3 or SMK-125-A7	

Ordering Information

Clamps must be ordered separately.



Environmental Specifications

Temperature range	°F (°C)	-40 to +140 (-40 to +60)
Wind Loading Area (Flat Plate Equivalent)	ft² (m²)	1.62 (0.15)
Wind Loading Area (1/2" ice)	ft² (m²)	2.82 (0.26)
Rated wind velocity (no ice)	mph (km/h)	170 (274)
Rated wind velocity (1/2" radial ice)	mph (km/h)	125 (201)
Lateral thrust (100 mph No Ice)	lbs (N)	59 (262.4)
Torsional moment (100 mph No Ice)	ft-lbs (Nm)	44 (59.4)
Bending moment (100 mph No Ice)	ft-lbs (Nm)	124 (167.4)
Tip deflection (100 mph No Ice)	degrees	0.4

Region	United States	Europe, Middle East and Africa	Caribbean and Latin America	Canada and rest of the world
Telephone	USA: 1 800 263 3275	International: +44 (0) 1487 84 28 19	International: +1 905 726 7676	Canada: 1 800 263 3275 International: +1 905 727 0165
E-mail	salesusa@sinctech.com	salesuk@sinctech.com	salesla@sinctech.com	salescan@sinctech.com