

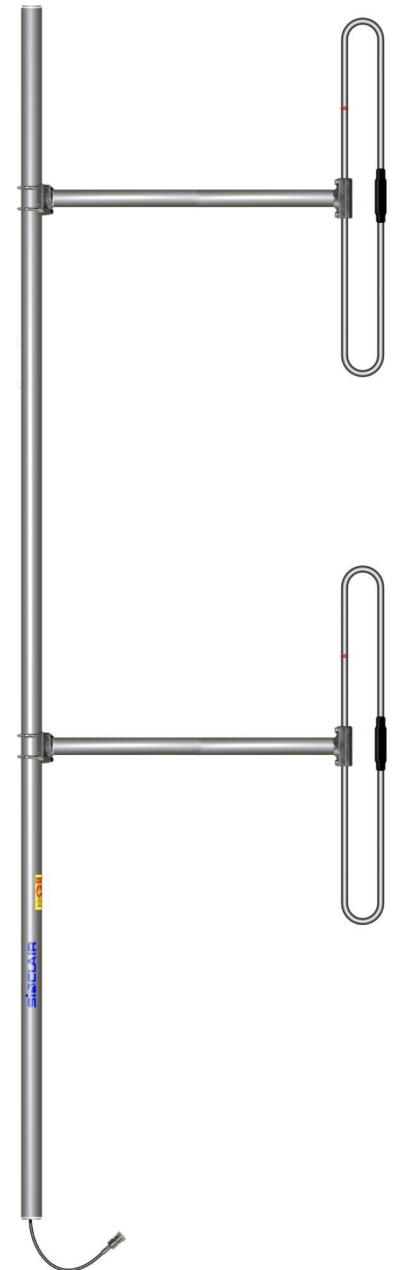
SD212-SF3P2SNF(C0.5) 2 dipole, 5 dBd, bi-directional, 190-225 MHz

- 2-bay dipole that covers the 190-225 MHz band with a 6 inch pigtail
- 5 dBd gain with bi-directional pattern
- Antenna can be either top or side mounted.
- 250 W power handling

Recommend SMK-125-A3 for 3' max. from tower, max. 24" tower leg spacing or the SMK-125-A7 for 7' max. from tower, max. 24" tower leg spacing when side mounting.

The SD212 series is an extremely rugged 2-bay exposed dipole antenna designed for applications where moderate gain is required. These premium-quality antennas are well suited to public safety applications.

The design of the SD212-SF3P2SNF(C0.5) antenna covers the frequency range of 190 to 225 MHz with a VSWR of 1.5:1.



www.sinctech.com

Region	United States	Europe, Middle East and Africa	Caribbean and Latin America	Canada and rest of the world
Telephone	USA: 1 800 263 3275	International: +44 (0) 1487 84 28 19	International: +1 905 726 7676	Canada: 1 800 263 3275 International: +1 905 727 0165
E-mail	salesusa@sinctech.com	salesuk@sinctech.com	salesla@sinctech.com	salescan@sinctech.com

Electrical Specifications

Frequency Range	MHz	190 to 225
Bandwidth	MHz	35
Connector		N-Female
Gain (nominal)	dBd (dBi)	5 (7.1)
Input VSWR (max)		1.5:1
Polarization		vertical
Impedance	Ω	50
Pattern		Bi-directional
Vertical beamwidth (typ)	degrees	33
Average Power Input (max)	W	250
Lightning protection		DC ground
Electrical tilt (available)		0,2,4,6,8, or 10 degrees

Notes

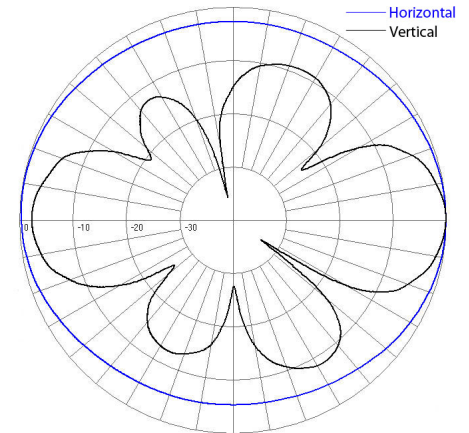
*1 : Qty 2 required

Mechanical Specifications

Width	in (mm)	16.9 (429)
Depth	in (mm)	3 (76)
Length/ Height	in (mm)	100 (2540)
Base pipe diameter	in (mm)	1.9 (48)
Base pipe mounting length	in (mm)	24 (610)
Radiating element material		aluminum
Base pipe material		aluminum
Weight	lbs (kg)	18 (8.17)
Weight iced (1/2" ice)	lbs (kg)	42 (19.07)
Mounting Hardware (Optional)		Clamp005, Clamp015, or Clamp130 *1
Actual shipping weight	lbs (kg)	35 (15.89)
Shipping dimensions	in (mm)	103x35x4 (2616x889x102)
Mounting configurations		universal
Recommended For Offset Side Mount:		SMK-125-A3 or SMK-125-A7

Ordering Information

Clamps must be ordered separately.



Environmental Specifications

Temperature range	°F (°C)	-40 to +140 (-40 to +60)
Wind Loading Area (Flat Plate Equivalent)	ft² (m²)	1.41 (0.13)
Wind Loading Area (1/2" ice)	ft² (m²)	2.46 (0.23)
Rated wind velocity (no ice)	mph (km/h)	175 (282)
Rated wind velocity (1/2" radial ice)	mph (km/h)	125 (201)
Lateral thrust (100 mph No Ice)	lbs (N)	52 (231.3)
Torsional moment (100 mph No Ice)	ft-lbs (Nm)	17 (23)
Bending moment (100 mph No Ice)	ft-lbs (Nm)	154 (207.9)
Tip deflection (100 mph No Ice)	degrees	0.35

Region	United States	Europe, Middle East and Africa	Caribbean and Latin America	Canada and rest of the world
Telephone	USA: 1 800 263 3275	International: +44 (0) 1487 84 28 19	International: +1 905 726 7676	Canada: 1 800 263 3275 International: +1 905 727 0165
E-mail	salesusa@sinctech.com	salesuk@sinctech.com	salesla@sinctech.com	salescan@sinctech.com