

SD212-SF2P4LDF(D00I) 2 dipole, 5 dBd, offset, low PIM, inverted, 138-174 MHz

- 2-bay dipole antenna that covers the 138-174 MHz band
- 5 dBd gain with offset pattern
- 300 W power handling
- Inverted mount

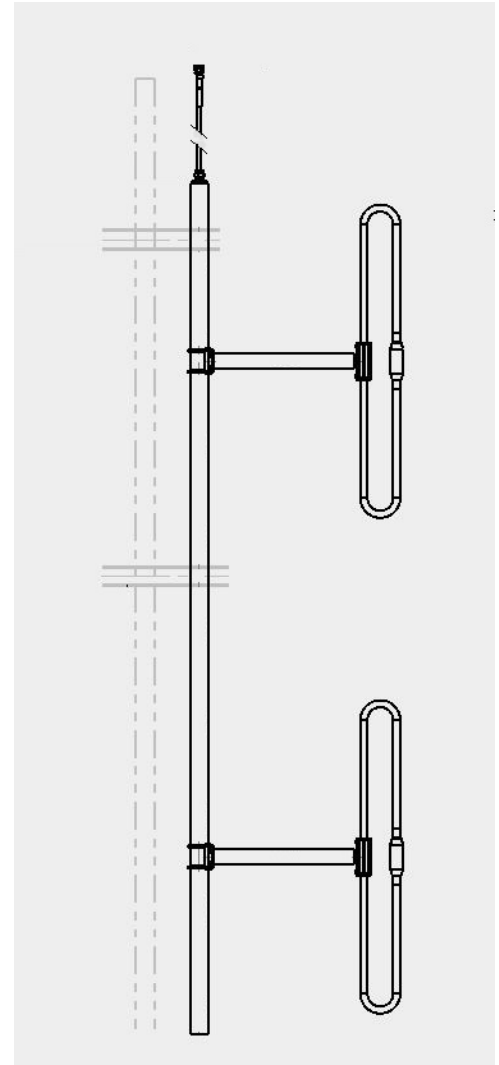
**Recommend SMK-125-A3 or SMK-125-A7 for Offset Side Mount.
Available from Sinclair separately.**

The SD212-L series is an extremely rugged 2-bay exposed dipole antenna designed for applications where moderate gain is required and Passive Intermodulation interference (PIM) is a consideration. These premium-quality antennas are well suited for public safety applications.

The SD212-L provides industry leading -150 dBc Passive Intermodulation (PIM) performance.

Application Notes

- The SD212-L is a rugged low-PIM, medium gain dipole antenna designed to provide coverage for public safety applications. The SD212-L is especially well suited to multicoupled applications where PIM is a consideration.
- Sub bands:
118-138 MHz (F1)
138-174 MHz (F2)
190-225 MHz (F3)



Region	United States	Europe, Middle East and Africa	Caribbean and Latin America	Canada and rest of the world
Telephone	USA: 1 800 263 3275	International: +44 (0) 1487 84 28 19	International: +1 905 726 7676	Canada: 1 800 263 3275 International: +1 905 727 0165
E-mail	salesusa@sinctech.com	salesuk@sinctech.com	salesla@sinctech.com	salescan@sinctech.com
Product Specification Sheet EPR 017874 Customer Tech Manual 006735		SD212-SF2P4LDF(D00I)	Issue: 1	Dated: 05-06-17 Dated: 23-05-17

Electrical Specifications

Frequency Range	MHz	138 to 174
Connector		7/16 DIN-Female
Gain (nominal)	dBd (dBi)	5 (7.1)
Input VSWR (max)		1.5:1
Polarization		vertical
Impedance	Ω	50
Pattern		Offset
Horizontal beamwidth (typ)	degrees	210
Vertical beamwidth (typ)	degrees	34
Average Power Input (max)	W	300
Passive intermod. (2x20W, 3rd ord.)	dBc	-150
Lightning protection		DC ground
Electrical tilt (available)		0,2,4,6,8, or 10 degrees

Notes

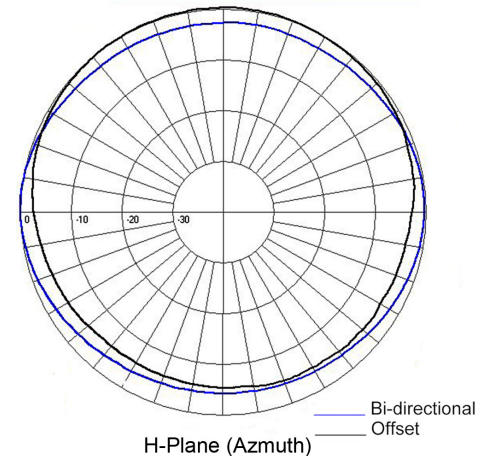
*1 : Qty 2

Mechanical Specifications

Width	in (mm)	21.5 (546)
Depth	in (mm)	3.5 (89)
Length/ Height	in (mm)	92 (2337)
Base pipe diameter	in (mm)	1.9 (48)
Radiating element material		aluminum
Base pipe material		aluminum
Weight	lbs (kg)	18 (8.17)
Weight iced (1/2" ice)	lbs (kg)	43 (19.52)
Mounting Hardware (Optional)		Clamp005, Clamp015, or Clamp130 *1
Recommended For Offset Side Mount:		SMK-125-A3 or SMK-125-A7
Mounting configurations		Inverted
Actual shipping weight	lbs (kg)	38 (17.25)
Shipping dimensions	in (mm)	123x24x4 (3124x610x102)

Ordering Information

Clamps must be ordered separately.



Environmental Specifications

Temperature range	°F (°C)	-40 to +140 (-40 to +60)
Wind Loading Area (Flat Plate Equivalent)	ft² (m²)	1.6 (0.15)
Wind Loading Area (1/2" ice)	ft² (m²)	2.8 (0.26)
Rated wind velocity (no ice)	mph (km/h)	225 (362)
Rated wind velocity (1/2" radial ice)	mph (km/h)	160 (258)
Lateral Thrust (100 mph No Ice)	lbs (N)	57 (253.5)
Torsional moment (100 mph No Ice)	ft-lbs (Nm)	32 (43.2)
Bending moment (100 mph No Ice)	ft-lbs (Nm)	95 (128.3)

Region	United States	Europe, Middle East and Africa	Caribbean and Latin America	Canada and rest of the world
Telephone	USA: 1 800 263 3275	International: +44 (0) 1487 84 28 19	International: +1 905 726 7676	Canada: 1 800 263 3275 International: +1 905 727 0165
E-mail	salesusa@sinctech.com	salesuk@sinctech.com	salesla@sinctech.com	salescan@sinctech.com