

SD212-HF3P2SNM(D00I) 2 dipole, 5 dBd, bi-directional, HD, Inverted, 190-225 MHz

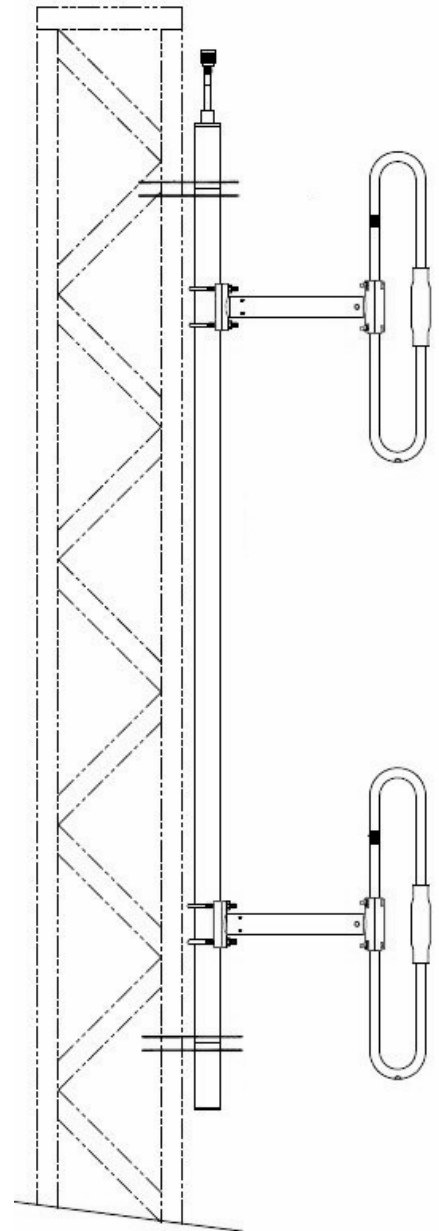
- Also referred as: SD212-HF3P2SNM(I)
- 2-bay dipole that covers the 190-225 MHz band
 - 5 dBd gain in bi-directional pattern (1/2 wave configuration)
 - Heavy duty, inverted design
 - 250W power handling

**Recommend SMK-425-A3-T3 or SMK-425-A7-T3 for Offset Side Mount.
Available from Sinclair separately.**

The SD212-H series is a rugged heavy duty 2-bay exposed dipole antenna designed for applications where moderate gain is required. These premium-quality antennas are well suited to public safety/public security applications.

The design of these antennas provides for coverage between 190-225 MHz.

The standard connector offered is N male which is terminated on a 1 foot cable.



Antenna may not appear exactly as picture.

| Region | United States | Europe, Middle East and Africa | Caribbean and Latin America | Canada and rest of the world |
|-----------|-----------------------|--------------------------------------|--------------------------------|--|
| Telephone | USA: 1 800 263 3275 | International: +44 (0) 1487 84 28 19 | International: +1 905 726 7676 | Canada: 1 800 263 3275 International: +1 905 727 0165 |
| E-mail | salesusa@sinctech.com | salesuk@sinctech.com | salesla@sinctech.com | salescan@sinctech.com |

Electrical Specifications

| | | | |
|-----------------------------|-----------|--------------------------|----|
| Frequency Range | MHz | 190 to 225 | |
| Bandwidth | MHz | 35 | |
| Connector | | N-Male | *1 |
| Gain (nominal) | dBd (dBi) | 5 (7.1) | |
| Input VSWR (max) | | 1.5:1 | |
| Polarization | | vertical | |
| Impedance | Ω | 50 | |
| Pattern | | Bi-directional | |
| Vertical beamwidth (typ) | degrees | 33 | |
| Average Power Input (max) | W | 250 | |
| Lightning protection | | DC ground | |
| Electrical tilt (available) | | 0,2,4,6,8, or 10 degrees | |

Notes

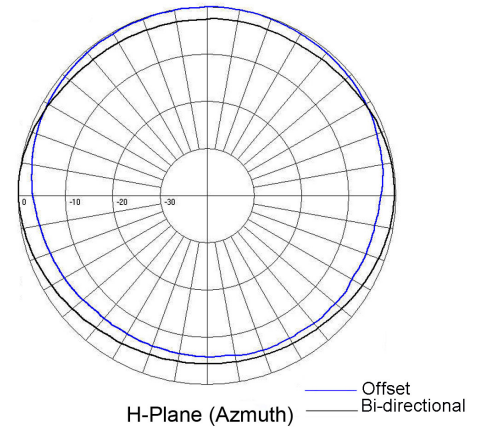
- *1 : N-female also available
- *2 : Qty 2

Mechanical Specifications

| | | | |
|------------------------------------|----------|---------------------------------|----|
| Width | in (mm) | 32 (813) | |
| Depth | in (mm) | 3.5 (89) | |
| Length/ Height | in (mm) | 75.25 (1911) | |
| Base pipe diameter | in (mm) | 2.38 (60) | |
| Base pipe mounting length | in (mm) | 65 (1651) | |
| Radiating element material | | aluminum | |
| Base pipe material | | aluminum | |
| Weight | lbs (kg) | 20 (9.08) | |
| Weight iced (1/2" ice) | lbs (kg) | 43 (19.52) | |
| Mounting Hardware (Optional) | | Clamp005, Clamp015, or Clamp130 | *2 |
| Actual shipping weight | lbs (kg) | 30.5 (13.85) | |
| Shipping dimensions | in (mm) | 80x35x4 (2032x889x102) | |
| Mounting configurations | | Inverted | |
| Recommended For Offset Side Mount: | | SMK-425-A3-T3 or SMK-425-A7-T3 | |

Ordering Information

Clamps must be ordered separately.



Environmental Specifications

| | | |
|---|-------------|--------------------------|
| Temperature range | °F (°C) | -40 to +140 (-40 to +60) |
| Wind Loading Area (Flat Plate Equivalent) | ft² (m²) | 1.57 (0.15) |
| Wind Loading Area (1/2" ice) | ft² (m²) | 2.66 (0.25) |
| Rated wind velocity (no ice) | mph (km/h) | 215 (346) |
| Rated wind velocity (1/2" radial ice) | mph (km/h) | 175 (282) |
| Lateral thrust (100 mph No Ice) | lbs (N) | 57.5 (255.8) |
| Torsional moment (100 mph No Ice) | ft-lbs (Nm) | 44 (59.4) |
| Bending moment (100 mph No Ice) | ft-lbs (Nm) | 84 (113.4) |
| Tip deflection (100 mph No Ice) | degrees | 0.12 |

| Region | United States | Europe, Middle East and Africa | Caribbean and Latin America | Canada and rest of the world |
|------------------|-----------------------|--------------------------------------|--------------------------------|--|
| Telephone | USA: 1 800 263 3275 | International: +44 (0) 1487 84 28 19 | International: +1 905 726 7676 | Canada: 1 800 263 3275 International: +1 905 727 0165 |
| E-mail | salesusa@sinctech.com | salesuk@sinctech.com | salesla@sinctech.com | salescan@sinctech.com |