

SD210-HF1P4SNM 1 dipole, 2.5 dBd, offset, HD, 118-138 MHz

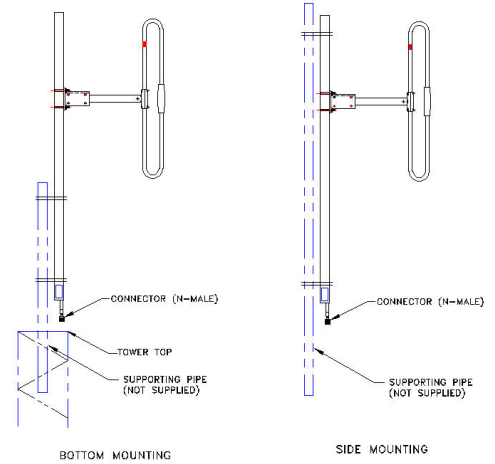
Also referred as: SRL210CNM*1-4

- Covers the entire 118-138 MHz band
- 2.5 dBd gain with offset pattern
- Heavy duty with 200 Watts power handling
- Can be top or side mounted (Universal mount)

Recommend SMK-425-A3-T3 or SMK-425-A7-T3 for Offset Side Mount.
Available from Sinclair separately.

The SD210-H series of antennas is unique in its high efficiency and exceptionally wide bandwidth, covering the frequency ranges of 118-138, 138-174, and 220-225 MHz with a VSWR of 1.5:1 or better. Because of its bandwidth, the SD210 series is perfectly suited for multicoupled systems.

Two model variants of this rugged antenna are available (Offset which offers 2.5 dBd of gain, and bi-directional with 2.0 dBd of gain).



www.sinctech.com

Region	United States	Europe, Middle East and Africa	Caribbean and Latin America	Canada and rest of the world
Telephone	USA: 1 800 263 3275	International: +44 (0) 1487 84 28 19	International: +1 905 726 7676	Canada: 1 800 263 3275 International: +1 905 727 0165
E-mail	salesusa@sinctech.com	salesuk@sinctech.com	salesla@sinctech.com	salescan@sinctech.com

Electrical Specifications

Frequency Range	MHz	118 to 138	
Connector		N-Male	*1
Gain (nominal)	dBd (dBi)	2.5 (4.6)	
VSWR (max)		1.5:1	
Polarization		vertical	
Impedance	Ω	50	
Pattern		Offset	
Horizontal beamwidth (typ)	degrees	210	*2
Vertical beamwidth (typ)	degrees	68	
Average Power Input (max)	W	200	
Lightning protection		DC ground	
Main Beam Electrical Tilt (Downtilt)	degrees	Not available	

Notes

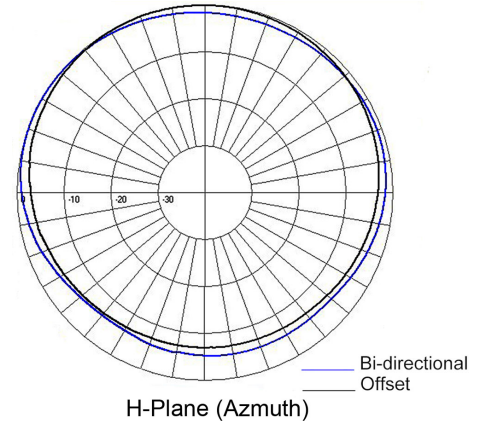
- *1 : N-Female available
- *2 : For offset only
- *3 : Top
- *4 : Qty 2
- *5 : 0.5" radial ice
- *6 : Value based on 100 mph with 0" ice
- *7 : Value based on 100 mph with 0" ice
- *8 : Value based on 100 mph with 0" ice
- *9 : Value based on 100 mph with 0" ice

Mechanical Specifications

Width	in (mm)	28.1 (714)	
Depth	in (mm)	3.5 (89)	
Length/ Height	in (mm)	72 (1829)	
Base pipe diameter	in (mm)	2.88 (73)	
Base pipe mounting length	in (mm)	24 (610)	*3
Radiating element material		aluminum	
Weight	lbs (kg)	21.5 (9.76)	
Weight iced (1/2" ice)	lbs (kg)	42 (19.07)	
Mounting Hardware (Optional)		Clamp147 or Clamp015	*4
Estimated Shipping Weight	lbs (kg)	38 (17.25)	
Shipping dimensions	in (mm)	84x48x6 (2134x1219x152)	
Mounting configurations		Universal Mount	
Recommended For Offset Side Mount:		SMK-425-A3-T3 or SMK-425-A7-T3	

Ordering Information

Clamps must be ordered separately.



Environmental Specifications

Temperature range	°F (°C)	-40 to +140 (-40 to +60)	
Wind Loading Area (Flat Plate Equivalent)	ft² (m²)	1.46 (0.14)	
Wind Loading Area (1/2" ice)	ft² (m²)	2.35 (0.22)	*5
Rated wind velocity (no ice)	mph (km/h)	215 (346)	
Rated wind velocity (1/2" radial ice)	mph (km/h)	175 (282)	
Lateral thrust (100 mph No Ice)	lbs (N)	53.5 (238)	*6
Torsional moment (100 mph No Ice)	ft-lbs (Nm)	33.6 (45.4)	*7
Bending moment (100 mph No Ice)	ft-lbs (Nm)	93.5 (126.2)	*8
Tip deflection (100 mph No Ice)	degrees	0.12	*9

Region	United States	Europe, Middle East and Africa	Caribbean and Latin America	Canada and rest of the world
Telephone	USA: 1 800 263 3275	International: +44 (0) 1487 84 28 19	International: +1 905 726 7676	Canada: 1 800 263 3275 International: +1 905 727 0165
E-mail	salesusa@sinctech.com	salesuk@sinctech.com	salesla@sinctech.com	salescan@sinctech.com