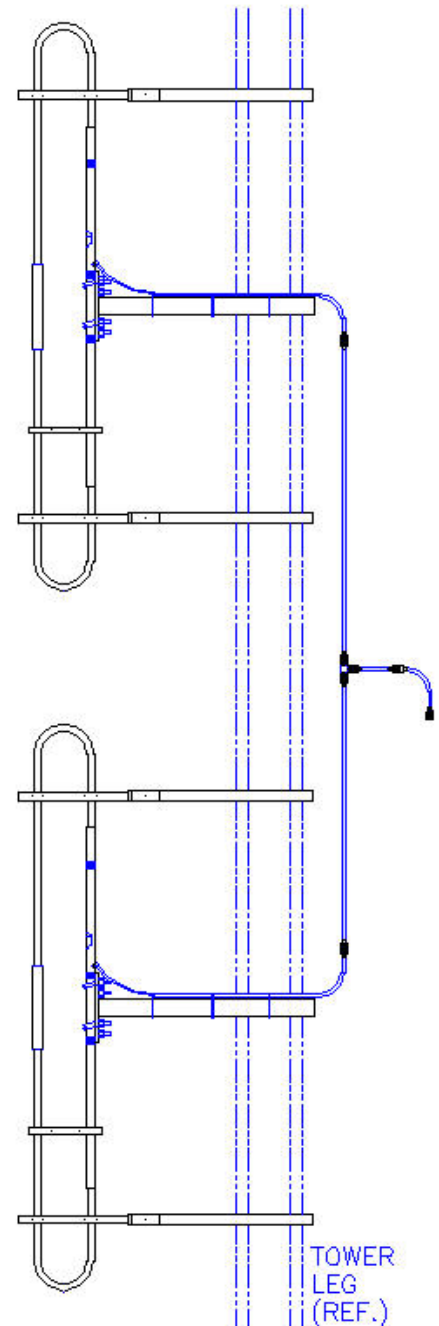


**SD112-SF1PASNM(FXXXX)** Dual stacked exposed dipole, 5.5 dBd, 10% Bandwidth, 27-35 MHz

Also referred as: SRL110A-2

- Covers 27-35 MHz with a 10% bandwidth for a VSWR of 1.5:1
- 5.5 dBd gain with offset pattern
- Dual stacked exposed dipole
- 300W power handling

The SD112 is a two dipole array for side mounting on a supporting structure. The SD112 series is supplied with a special welded boom and anti-torque support. Due to the many mounting possibilities, mounting hardware is not supplied with these antennas. Engineering assistance will be provided in the selection of the proper hardware.



Antenna may not appear exactly as picture.

Region	United States	Europe, Middle East and Africa	Caribbean and Latin America	Canada and rest of the world
<b>Telephone</b>	USA: 1 800 263 3275	International: +44 (0) 1487 84 28 19	International: +1 905 726 7676	Canada: 1 800 263 3275 International: +1 905 727 0165
<b>E-mail</b>	salesusa@sinctech.com	salesuk@sinctech.com	salesla@sinctech.com	salescan@sinctech.com

Product Specification Sheet  
 EPR 015760  
 Customer Tech Manual 005118

SD112-SF1PASNM(FXXXX)

Issue: 2

Dated: 14-12-16  
 Dated: 30-09-13

Sinclair's commitment to product leadership may result in improvement or change to this product  
 Copyright © Sinclair Technologies

#### Electrical Specifications

Frequency Range	MHz	27 to 35
Connector		N-Male
Gain (nominal)	dBd (dBi)	5.5 (7.6)
Input VSWR (max)		1.5:1
Polarization		vertical
Pattern		Offset
Vertical beamwidth (typ)	degrees	34
Average Power Input (max)	W	300
Lightning protection		DC ground

#### Notes

- \*1 : Max
- \*2 : Max
- \*3 : Max
- \*4 : Qty 12
- \*5 : Max
- \*6 : Recommend Clamp017

#### Mechanical Specifications

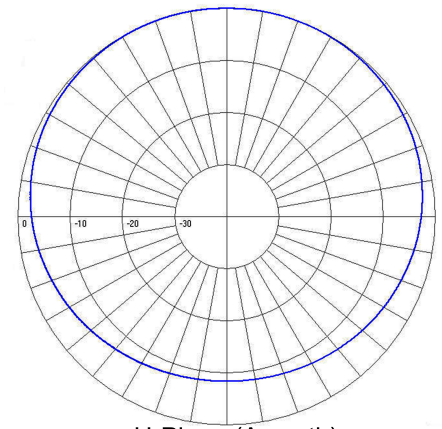
Width	in (mm)	93 (2362)	
Depth	in (mm)	3.5 (89)	
Length/ Height	in (mm)	494 (12548)	*1
Base pipe diameter	in (mm)	1.9 (48)	
Radiating element material		aluminum	
Weight	lbs (kg)	65 (29.51)	*2
Weight iced (1/2" ice)	lbs (kg)	184 (83.54)	*3
Mounting Hardware (Optional)		Clamp017, Clamp033, or Clamp130	*4
Estimated Shipping Weight	lbs (kg)	80 (36.32)	
Shipping dimensions	in (mm)	183x7x16 (4648x178x406)	*5
Mounting hardware		clamps not supplied	*6

#### Ordering Information

Specify frequency of operation.

#### Environmental Specifications

Temperature range	°F (°C)	-40 to +140 (-40 to +60)
Wind Loading Area (Flat Plate Equivalent)	ft² (m²)	10 (0.93)
Wind Loading Area (1/2" ice)	ft² (m²)	15 (1.39)
Rated wind velocity (no ice)	mph (km/h)	105 (169)
Rated wind velocity (1/2" radial ice)	mph (km/h)	70 (113)
Lateral thrust (100 mph No Ice)	lbs (N)	131 (582.7)
Bending moment (100 mph No Ice)	ft-lbs (Nm)	388 (523.8)



H-Plane (Azimuth)

Region	United States	Europe, Middle East and Africa	Caribbean and Latin America	Canada and rest of the world
Telephone	USA: 1 800 263 3275	International: +44 (0) 1487 84 28 19	International: +1 905 726 7676	Canada: 1 800 263 3275 International: +1 905 727 0165
E-mail	salesusa@sinctech.com	salesuk@sinctech.com	salesla@sinctech.com	salescan@sinctech.com