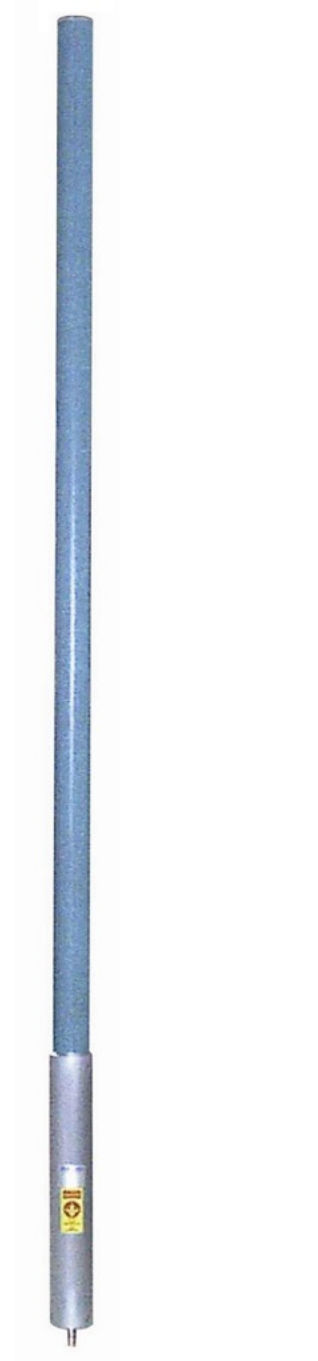


SC459-SF1LNF(D00) Collinear omni, 9 dBd, low PIM, HD, 806-869 MHz

- Patent-pending design covers the 806-869 MHz frequency range
- -138 dBc PIM rating for low noise characteristics, ideal for trunking systems
- Rugged design for harsh environment

The SC459 is Sinclair's next generation of collinear antenna. The patent-pending antenna utilizes cutting-edge, field-proven balanced design to deliver an unparalleled combination of higher gain, wider bandwidth, highly consistent RF pattern, higher wind rating, and lighter weight, all in a small form factor. Unbeatable, heavy-duty construction along with the enhanced wind rating, means these antennas can last for years in the most challenging environments. The new SC459 series is ideal for public safety applications as it offers reliability, durability, and easy installation in a lightweight and compact package.



www.sinctech.com

Region	United States	Europe, Middle East, and Africa	Canada, Caribbean, and Latin America	Asia-Pacific
Telephone	1 800 263 3275	+44 (0) 1487 84 28 19	Canada: 1 800 263 3275 International: +1 905 726 7676	+1 905 727 0165
E-mail	salesusa@sinctech.com	salesuk@sinctech.com	salescan@sinctech.com	salesasia@sinctech.com
Product Specification Sheet		SC459-SF1LNF(D00)	Issue: 2	Dated: 26-01-21

### Electrical Specifications

Frequency Range	MHz	806 to 869	
Bandwidth	MHz	63	
Connector		N-Female	
Gain (nominal)	dBd (dBi)	9 (11.1)	*1
Input VSWR (max)		1.5:1	
Polarization		vertical	
Impedance	Ω	50	
Pattern		Omni-directional	
Vertical beamwidth (typ)	degrees	7	*2
Average Input Power (max)	W	500	
Passive intermod. (2x20W, 3rd ord.)	dBc	-138	
Lightning protection		DC ground	
Electrical tilt (available)		0	

### Notes

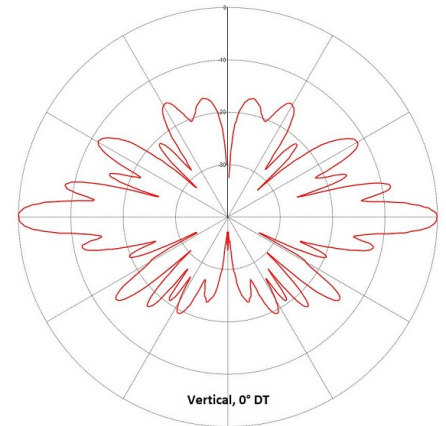
- \*1 : ±1 dBd
- \*2 : ±1 degree
- \*3 : Qty 2

### Mechanical Specifications

Width	in (mm)	2.5 (64)	
Depth	in (mm)	2.5 (64)	
Length/ Height	in (mm)	123 (3124)	
Base pipe diameter	in (mm)	2.5 (64)	
Base pipe mounting length	in (mm)	12 (305)	
Radiating element material		Printed Circuit Board	
Radome material		fiberglass	
Weight	lbs (kg)	12.5 (5.68)	
Weight iced (1/2" ice)	lbs (kg)	25 (11.35)	
Mounting Hardware (Optional)		Clamp005X or Clamp130	*3
Mounting configurations		upright	
Actual shipping weight	lbs (kg)	29 (13.17)	
Shipping dimensions	in (mm)	133x4.5x4.5 (3378x114x114)	
Radome Colour		Blue	

### Ordering Information

Clamps must be ordered separately.



### Environmental Specifications

Temperature range	°F (°C)	-40 to +140 (-40 to +60)
Wind Loading Area (Flat Plate Equivalent)	ft² (m²)	1.4 (0.13)
Wind Loading Area (1/2" ice)	ft² (m²)	1.9 (0.18)
Survival wind velocity (no ice)	mph (km/h)	200 (322)
Survival wind velocity (1/2" radial ice)	mph (km/h)	140 (225)
Rated wind velocity (no ice)	mph (km/h)	130 (209)
Rated wind velocity (1/2" radial ice)	mph (km/h)	100 (161)

Region	United States	Europe, Middle East, and Africa	Canada, Caribbean, and Latin America	Asia-Pacific
Telephone	1 800 263 3275	+44 (0) 1487 84 28 19	Canada: 1 800 263 3275 International: +1 905 726 7676	+1 905 727 0165
E-mail	salesusa@sinctech.com	salesuk@sinctech.com	salescan@sinctech.com	salesasia@sinctech.com
Product Specification Sheet		SC459-SF1LNF(D00)	Issue: 2	Dated: 26-01-21