

SC433-HF1SNF(D00) Collinear omni, 2.5 dBd, HD, 806-869 MHz

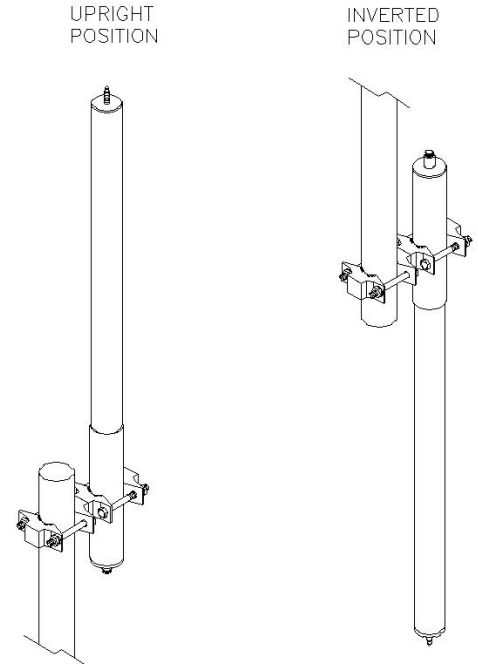
Also referred as: SRL433NHD*1

- Low profile with high power handling capability
- Ideal for in-city microcell applications
- Durable heavy duty long lasting fiberglass radome construction

Recommend using SMK-325-A3 or SMK-325-A7 kits when side mounting.

The SC433 offers moderate gain for use in paging and data systems where omnidirectional coverage is required, or additional power-handling capability is needed.

Also available with an N-Male connector as SC433-HF1SNM(D00).



www.sinctech.com

Region	United States	Europe, Middle East and Africa	Caribbean and Latin America	Canada and rest of the world
Telephone	USA: 1 800 263 3275	International: +44 (0) 1487 84 28 19	International: +1 905 726 7676	Canada: 1 800 263 3275 International: +1 905 727 0165
E-mail	salesusa@sinctech.com	salesuk@sinctech.com	salesla@sinctech.com	salescan@sinctech.com
Product Specification Sheet		SC433-HF1SNF(D00)	Issue: 10	Dated: 14-12-16
EPR 016161				Dated: 16-11-15
Customer Tech Manual 005450				

Electrical Specifications

Frequency Range	MHz	806 to 869
Connector		N-Female *1
Gain (nominal)	dBd (dBi)	2.5 (4.6)
Input VSWR (max)		1.5:1
Polarization		vertical
Pattern		Omni-directional
Vertical beamwidth (typ)	degrees	33
Average Power Input (max)	W	500
Lightning protection		DC ground

Notes

*1 : Also available with N-Male.

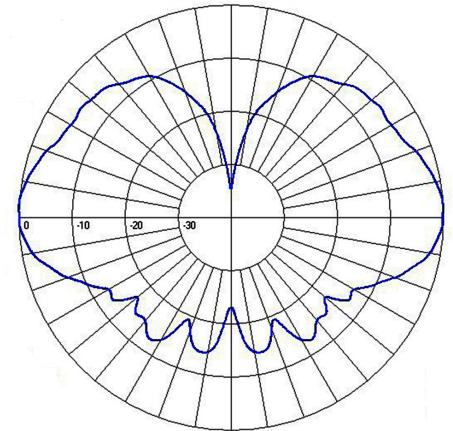
*2 : Qty 2

Mechanical Specifications

Width	in (mm)	2.5 (64)
Depth	in (mm)	2.5 (64)
Length/ Height	in (mm)	40.83 (1037)
Base pipe diameter	in (mm)	2.5 (64)
Radome material		fiberglass (UV protected)
Weight	lbs (kg)	7.4 (3.36)
Mounting Hardware (Included)		Clamp130 *2
Actual shipping weight	lbs (kg)	8.8 (4)
Shipping dimensions	in (mm)	64.8x5x5 (1646x127x127)
Mounting configurations		upright, inverted
Recommended For Offset Side Mount:		SMK-325-A3 or SMK-325-A7

Environmental Specifications

Temperature range	°F (°C)	-40 to +140 (-40 to +60)
Wind Loading Area (Flat Plate Equivalent)	ft ² (m ²)	0.44 (0.04)
Rated wind velocity (no ice)	mph (km/h)	150 (242)
Lateral thrust (100 mph No Ice)	lbs (N)	16.7 (74.3)
Bending moment (100 mph No Ice)	ft-lbs (Nm)	17.1 (23.1)



Elevation

Region	United States	Europe, Middle East and Africa	Caribbean and Latin America	Canada and rest of the world
Telephone	USA: 1 800 263 3275	International: +44 (0) 1487 84 28 19	International: +1 905 726 7676	Canada: 1 800 263 3275 International: +1 905 727 0165
E-mail	salesusa@sinctech.com	salesuk@sinctech.com	salesla@sinctech.com	salescan@sinctech.com