

SC420-HF2LDF(DXX-NUF) Collinear omni, 7 dBd, low PIM, HD, Null Fill, 824-896 MHz

- Medium-gain antenna covering 824-896 MHz
- Light weight and compact design
- 0-6° electrical downtilt available
- Optimized Null Fill for close-in coverage enhancement

The SC420 omni-directional collinear antenna offers 7-7.5 dBd gain in an extremely rugged package. This lightweight antenna (only 12.5 lb excluding mounting clamps) is wind rated per EIA standards at 150 mph.

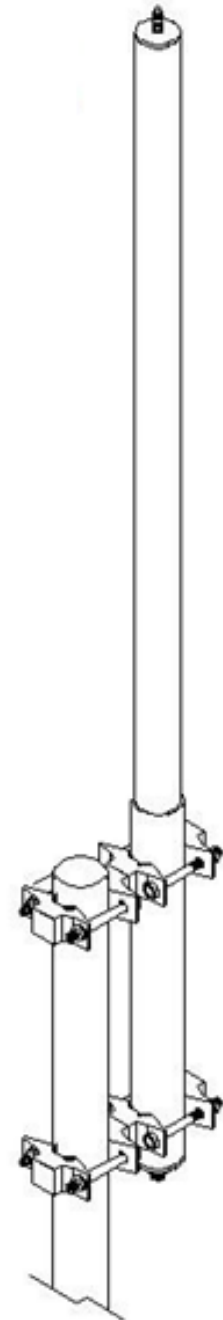
This null fill featured Antenna should be mounted in an upright position only.

When ordering, please refer to the chart below for the model number. Downtilt configurations are subject to various list price. Please contact your Sinclair Sales Representative or Customer Service Representative for more information.

Model Number	Downtilt
SC420-HF2LDF(D00-NuF)	0°
SC420-HF2LDF(D01-NuF)	1°
SC420-HF2LDF(D02-NuF)	2°
SC420-HF2LDF(D03-NuF)	3°
SC420-HF2LDF(D04-NuF)	4°
SC420-HF2LDF(D05-NuF)	5°
SC420-HF2LDF(D06-NuF)	6°

### Application Notes

- Recommend SMK-325-A3 or SMK-325-A7 for Offset Side Mount. Available from Sinclair separately.



Region	United States	Europe, Middle East and Africa	Caribbean and Latin America	Canada and rest of the world
Telephone	USA: 1 800 263 3275	International: +44 (0) 1487 84 28 19	International: +1 905 726 7676	Canada: 1 800 263 3275 International: +1 905 727 0165
E-mail	salesusa@sinctech.com	salesuk@sinctech.com	salesla@sinctech.com	salescan@sinctech.com

#### Electrical Specifications

Frequency Range	MHz	824 to 896
Connector		7/16 DIN-Female
Gain (nominal)	dBd (dBi)	7 (9.1)
Input VSWR (max)		1.5:1
Polarization		vertical
Pattern		Omni-directional
Vertical beamwidth (typ)	degrees	11
Average Input Power (max)	W	750
Passive intermod. (2x20W, 3rd ord.)	dBc	-150
Null fill	%	25
Lightning protection		DC ground
Electrical tilt (available)		0 to 6 degrees

#### Notes

\*1 : Qty 2

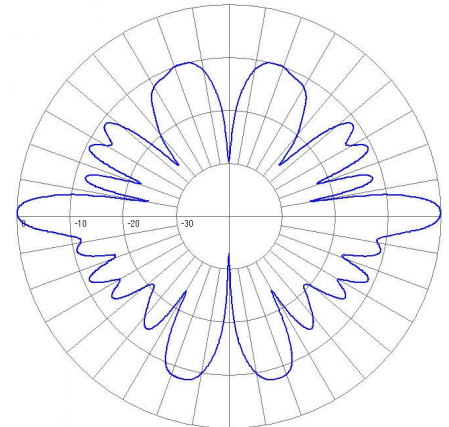
#### Mechanical Specifications

Width	in (mm)	2.5 (64)
Depth	in (mm)	2.5 (64)
Length	in (mm)	102.5 (2604)
Base pipe diameter	in (mm)	2.5 (64)
Base pipe mounting length	in (mm)	18 (457)
Radome material		fiberglass (UV protected)
Weight	lbs (kg)	15 (6.81)
Mounting Hardware (Included)		Clamp130
Recommended For Offset Side Mount:		SMK-325-A3 or SMK-325-A7
Mounting configurations		upright
Estimated Shipping Weight	lbs (kg)	41 (18.61)
Shipping dimensions	in (mm)	143x4x4 (3632x102x102)

#### Ordering Information

N-Female connector also available (PIM and power may vary).

When ordering, please refer to the model list on the previous page for specific model numbers and downtilt configurations.



Vertical, 0° downtilt

#### Environmental Specifications

Temperature range	°F (°C)	-40 to +140 (-40 to +60)
Wind Loading Area (Flat Plate Equivalent)	ft² (m²)	1.1 (0.1)
Wind Loading Area (1/2" ice)	ft² (m²)	2.5 (0.23)
Rated wind velocity (no ice)	mph (km/h)	150 (242)
Rated wind velocity (1/2" radial ice)	mph (km/h)	110 (177)
Lateral Thrust (100 mph No Ice)	lbs (N)	41.6 (185)
Bending moment (100 mph No Ice)	ft-lbs (Nm)	108.9 (147)

Region	United States	Europe, Middle East and Africa	Caribbean and Latin America	Canada and rest of the world
Telephone	USA: 1 800 263 3275	International: +44 (0) 1487 84 28 19	International: +1 905 726 7676	Canada: 1 800 263 3275 International: +1 905 727 0165
E-mail	salesusa@sinctech.com	salesuk@sinctech.com	salesla@sinctech.com	salescan@sinctech.com