

SC420-HF1LNF(DXX) Collinear omni, 7.5 dBd, HD, 806-869 MHz

- Medium-gain antenna covering 806-869 MHz
- Light weight and compact design
- 0-6° electrical downtilt available
- Zero degree downtilt model can be installed either inverted or upright

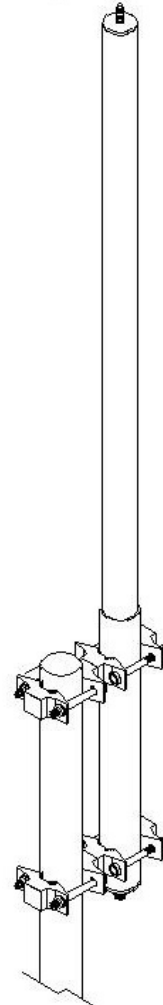
The SC420 omni-directional collinear antenna offers 7.5 dBd gain in an extremely rugged package. This lightweight antenna (only 12.5 lb excluding mounting clamps) is wind rated per EIA standards at 150 mph.

When ordering, please refer to the chart below for the model number. Downtilt configurations are subject to various list price. Please contact your Sinclair Sales Representative or Customer Service Representative for more information.

Model Number	Downtilt	CTM	Mounting configuration
SC420-HF1LNF(D00)	0°	005420	upright or inverted
SC420-HF1LNF(D01)	1°	006189	upright
SC420-HF1LNF(D02)	2°	006189	upright
SC420-HF1LNF(D03)	3°	006189	upright
SC420-HF1LNF(D04)	4°	006189	upright
SC420-HF1LNF(D05)	5°	006189	upright
SC420-HF1LNF(D06)	6°	006189	upright

Application Notes

- Recommend SMK-325-A3 or SMK-325-A7 for Offset Side Mount. Available from Sinclair separately.



www.sinclaire.com

Region	United States	Europe, Middle East and Africa	Caribbean and Latin America	Canada and rest of the world
Telephone	USA: 1 800 263 3275	International: +44 (0) 1487 84 28 19	International: +1 905 726 7676	Canada: 1 800 263 3275 International: +1 905 727 0165
E-mail	salesusa@sinclaire.com	salesuk@sinclaire.com	salesla@sinclaire.com	salescan@sinclaire.com

Electrical Specifications

Frequency Range	MHz	806 to 869
Connector		N-Female
Gain (nominal)	dBd (dBi)	7.5 (9.6)
Input VSWR (max)		1.5:1
Polarization		vertical
Pattern		Omni-directional
Vertical beamwidth (typ)	degrees	11
Average Input Power (max)	W	750
Passive intermod. (2x20W, 3rd ord.)	dBc	-139
Lightning protection		DC ground
Electrical tilt (available)		0 to 6 degrees

Mechanical Specifications

Width	in (mm)	2.5 (64)	
Depth	in (mm)	2.5 (64)	
Length	in (mm)	102.5 (2604)	
Base pipe diameter	in (mm)	2.5 (64)	
Base pipe mounting length	in (mm)	18 (457)	
Radome material		fiberglass (UV protected)	
Weight	lbs (kg)	15 (6.81)	
Mounting Hardware (Included)		Clamp130	*1
Recommended For Offset Side Mount:		SMK-325-A3 or SMK-325-A7	
Mounting configurations		upright, inverted	*2
Estimated Shipping Weight	lbs (kg)	41 (18.61)	
Shipping dimensions	in (mm)	143x4x4 (3632x102x102)	

Environmental Specifications

Temperature range	°F (°C)	-40 to +140 (-40 to +60)
Wind Loading Area (Flat Plate Equivalent)	ft² (m²)	1.1 (0.1)
Wind Loading Area (1/2" ice)	ft² (m²)	2.5 (0.23)
Rated wind velocity (no ice)	mph (km/h)	150 (242)
Rated wind velocity (1/2" radial ice)	mph (km/h)	110 (177)
Lateral Thrust (100 mph No Ice)	lbs (N)	41.6 (185)
Bending moment (100 mph No Ice)	ft-lbs (Nm)	108.9 (147)

Notes

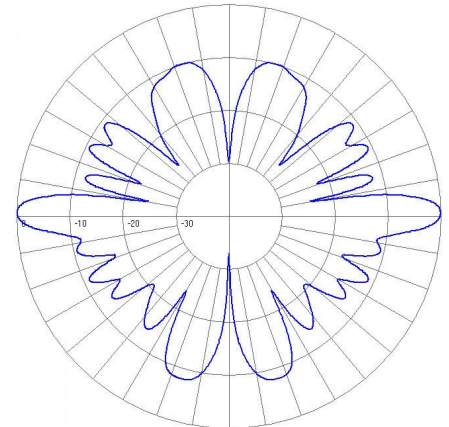
*1 : Qty 2

*2 : D00 model (0°DT) can be installed upright or inverted; downtilt models upright only.

Ordering Information

DIN-Female connector also available.

When ordering, please refer to the model list on the previous page for specific model numbers and downtilt configurations.



Vertical, 0° downtilt

Region	United States	Europe, Middle East and Africa	Caribbean and Latin America	Canada and rest of the world
Telephone	USA: 1 800 263 3275	International: +44 (0) 1487 84 28 19	International: +1 905 726 7676	Canada: 1 800 263 3275 International: +1 905 727 0165
E-mail	salesusa@sinctech.com	salesuk@sinctech.com	salesla@sinctech.com	salescan@sinctech.com