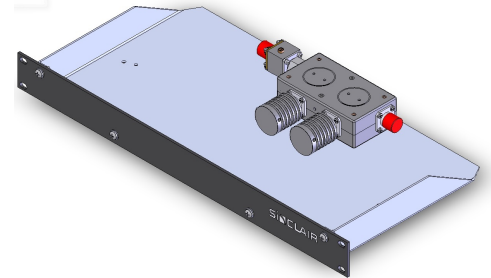


PC2212 I.M. Suppression panel, rack mount, dual stage isolator, two 30 Watt loads, 132-174 MHz

- Dual stage isolator with 30+30 Watt load provides 75 dB (typ) isolation
- Can be tuned over the 132-174 MHz band and comes with built-in harmonic filters
- Compact design shipped precisely tuned to customer specified frequency

Sinclair's PC series panels incorporate high performance single- or dual-stage isolators with various load terminations and Sinclair-built harmonic filters. These compact units offer optimum intermodulation control in a 19-inch rack mounted configuration. They are shipped precisely tuned to customer specified frequency, and exhibit 35 dB or 75 dB isolation when equipped with single- or dual-stage isolators respectively. Various load configurations are available depending on system power level and VSWR protection required.



www.sinctech.com

Region	United States	Europe, Middle East and Africa	Caribbean and Latin America	Canada and rest of the world
Telephone	USA: 1 800 263 3275	International: +44 (0) 1487 84 28 19	International: +1 905 726 7676	Canada: 1 800 263 3275 International: +1 905 727 0165
E-mail	salesusa@sinctech.com	salesuk@sinctech.com	salesla@sinctech.com	salescan@sinctech.com
Product Specification Sheet		PC2212	Issue: 95	Dated: 10-05-16

Electrical Specifications

Frequency Range	MHz	132 to 174
Bandwidth	MHz	4.6
VSWR (max)		1.25:1
Isolation (typ)	dB	75
Average Power Input (max)	W	125
Connectors		N-Female
Insertion Loss (typ) Tx to Ant	dB	0.7
Insertion Loss (max) Tx to Ant	dB	1
Isolation (min)	dB	50

Notes

*1 : 3% of Center Frequency

Mechanical Specifications

Width	in (mm)	19 (483)
Depth	in (mm)	9.13 (232)
Length/ Height	in (mm)	1.75 (44)
Actual shipping weight	lbs (kg)	20 (9.08)
Shipping dimensions	in (mm)	19x26x7 (483x660x178)

Environmental Specifications

Temperature range	°F (°C)	-22 to +140 (-30 to +60)
-------------------	---------	--------------------------

Region	United States	Europe, Middle East and Africa	Caribbean and Latin America	Canada and rest of the world
Telephone	USA: 1 800 263 3275	International: +44 (0) 1487 84 28 19	International: +1 905 726 7676	Canada: 1 800 263 3275 International: +1 905 727 0165
E-mail	salesusa@sinctech.com	salesuk@sinctech.com	salesla@sinctech.com	salescan@sinctech.com