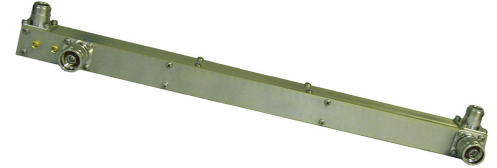


HH1141 Coupler, unbalanced, 5.2/1.5 dB, N-Male/ N-Female connector, 350 Watts, 66-100 MHz

- T1 to T2 inputs N Male, load and antenna termination N Female.
- Unbalanced 5.2/1.5 dB
- 350 Watt power handling
- VSWR less than 1.25 for T1 to T2 ports

With the growing requirement for closely-spaced higher power systems, Sinclair has introduced several new hybrid couplers. When installed on a panel with suitable Sinclair loads and harmonic filters, this series of 'HP' hybrid couplers is the basis of our higher power hybrid-ferrite combiners: a hybrid coupler panel is used to expand a 2-channel combiner up to 4 channels, 4 up to 6, etc.
All Sinclair hybrid couplers except HH-1140 are field tunable.



www.sinctech.com

Region	United States	Europe, Middle East and Africa	Caribbean and Latin America	Canada and rest of the world
Telephone	USA: 1 800 263 3275	International: +44 (0) 1487 84 28 19	International: +1 905 726 7676	Canada: 1 800 263 3275 International: +1 905 727 0165
E-mail	salesusa@sinctech.com	salesuk@sinctech.com	salesla@sinctech.com	salescan@sinctech.com

Product Specification Sheet
EPR 016828

HH1141

Issue: 2

Dated: 08-10-13
Dated: 13-04-11

Electrical Specifications

Frequency Range	MHz	66 to 100	*1
VSWR (max)		1.25:1	
Connectors		N-Male and N-Female	
Power Rating	W	350	
Insertion loss (max) Tx to Ant	dB	5.2	*2
Isolation (min)	dB	45	

Notes

- *1 : Bandwidth at 3% of centre frequency
- *2 : One port, 1.5 dB on the other.
- *3 : Excluding connectors
- *4 : Excluding connectors
- *5 : Excluding connectors

Mechanical Specifications

Depth	in (mm)	1.4 (36)	*3
Length/ Height	in (mm)	1.2 (30)	*4
Width	in (mm)	14 (356)	*5
Weight	lbs (kg)	1.4 (0.64)	
Actual Shipping weight	lbs (kg)	3 (1.36)	
Shipping dimensions	in (mm)	26x6x4 (660x152x102)	

Ordering Information

Specify operating frequencies.

Environmental Specifications

Temperature range	°F (°C)	-22 to +140 (-30 to +60)
-------------------	---------	--------------------------

Region	United States	Europe, Middle East and Africa	Caribbean and Latin America	Canada and rest of the world
Telephone	USA: 1 800 263 3275	International: +44 (0) 1487 84 28 19	International: +1 905 726 7676	Canada: 1 800 263 3275 International: +1 905 727 0165
E-mail	salesusa@sinctech.com	salesuk@sinctech.com	salesla@sinctech.com	salescan@sinctech.com