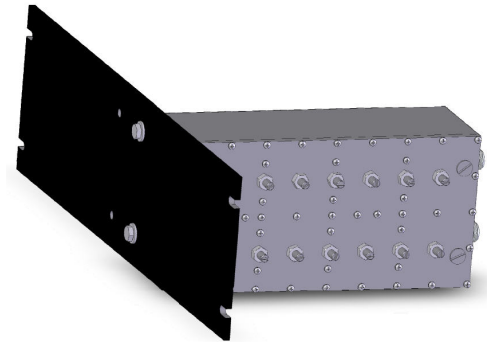
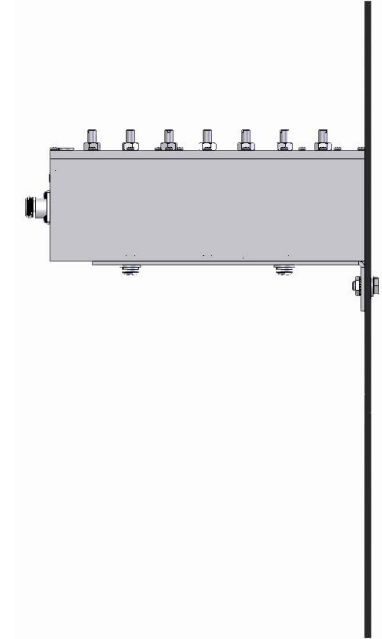


FP30802N-1-4 High Performance Preselector, UHF, 4 MHz BW, 450-470 MHz

- Extremely high selectivity using advanced cross coupled filter technology
- Very compact, low profile UHF preselector, 450-470 MHz
- High temperature stability
- Mounted on 19" rack mountable plates

The FP30802N preselector covers the 450-470 MHz band and is offered with a 4 MHz band width. It weighs 6 pounds / 2.7 Kg with height of 5.3 in / 133 mm, width of 19 in / 483 mm (19" rack mountable), and depth of 11 in / 279 mm. It also uses cross-coupled filter technology to deliver, in an extremely low profile design, very high temperature stability, and low insertion loss, typically less than 3 dB operating at Fo.



www.sinctech.com

| Region | United States | Europe, Middle East and Africa | Caribbean and Latin America | Canada and rest of the world |
|------------------|-----------------------|--------------------------------------|--------------------------------|--|
| Telephone | USA: 1 800 263 3275 | International: +44 (0) 1487 84 28 19 | International: +1 905 726 7676 | Canada: 1 800 263 3275 International: +1 905 727 0165 |
| E-mail | salesusa@sinctech.com | salesuk@sinctech.com | salesla@sinctech.com | salescan@sinctech.com |

Electrical Specifications

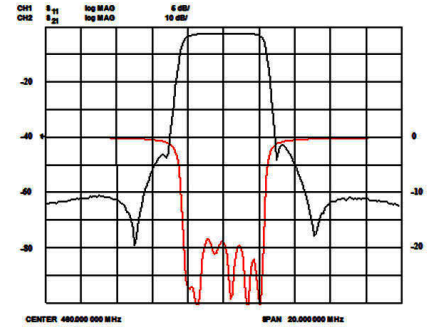
| | | |
|---------------------------------------|-----|------------|
| Frequency Range | MHz | 450 to 470 |
| Input VSWR (max) | | 1.5:1 |
| Bandwidth at specified insertion loss | MHz | 4 |
| Impedance | Ω | 50 |
| Average Power Input (max) | W | 100 |
| Input Connectors | | N-Female |
| Output Connectors | | N-Female |
| Approx Bandwidth @ 40 dB | MHz | 6 |
| Insertion Loss (max) Tx to Ant | dB | 3 |

Mechanical Specifications

| | | |
|-------------------------|----------|-----------------------|
| Width | in (mm) | 19 (483) |
| Depth | in (mm) | 11 (279) |
| Length/ Height | in (mm) | 5.25 (133) |
| Weight | lbs (kg) | 6 (2.72) |
| Shipping dimensions | in (mm) | 19x26x7 (483x660x178) |
| Mounting configurations | | 19 inch rack |

Environmental Specifications

| | | |
|-------------------|---------|--------------------------|
| Temperature range | °F (°C) | -22 to +140 (-30 to +60) |
|-------------------|---------|--------------------------|



www.sinctech.com

| Region | United States | Europe, Middle East and Africa | Caribbean and Latin America | Canada and rest of the world |
|------------------|-----------------------|--------------------------------------|--------------------------------|--|
| Telephone | USA: 1 800 263 3275 | International: +44 (0) 1487 84 28 19 | International: +1 905 726 7676 | Canada: 1 800 263 3275 International: +1 905 727 0165 |
| E-mail | salesusa@sinctech.com | salesuk@sinctech.com | salesla@sinctech.com | salescan@sinctech.com |