

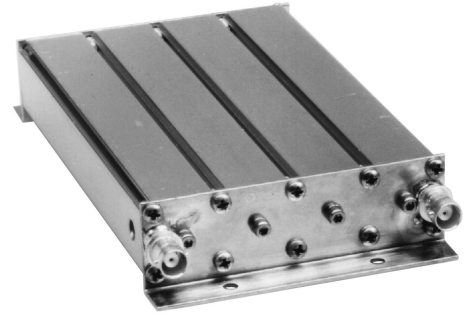
FP30401T-2-1

Preselector, 1 MHz bandwidth, compact, TNC connectors, 440-470 MHz

Also referred as: FP30401T*2-1

- Suitable for most standard multicoupling requirements
- Can be mounted directly on 1.75 " high receiver multicoupler tray
- Rugged compact construction with TNC-type female connectors

The FP30401 series preselectors are compact units that are suitable for most standard multicoupling requirements. Their size permits them to be mounted directly on the 1 3/4 in (44.5 mm) high receiver multicoupler trays.



www.sinctech.com

| Region | United States | Europe, Middle East and Africa | Caribbean and Latin America | Canada and rest of the world |
|------------------|-----------------------|--------------------------------------|--------------------------------|--|
| Telephone | USA: 1 800 263 3275 | International: +44 (0) 1487 84 28 19 | International: +1 905 726 7676 | Canada: 1 800 263 3275 International: +1 905 727 0165 |
| E-mail | salesusa@sinctech.com | salesuk@sinctech.com | salesla@sinctech.com | salescan@sinctech.com |

Electrical Specifications

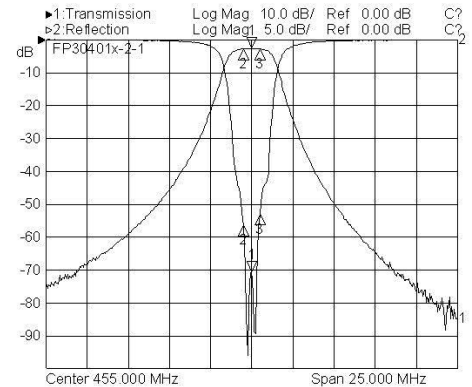
| | | |
|---------------------------------------|-----|------------|
| Frequency Range | MHz | 440 to 470 |
| Input VSWR (max) | | 1.5:1 |
| Insertion loss (typ) | dB | 3.4 |
| Bandwidth at specified insertion loss | MHz | 1 |
| Impedance | Ω | 50 |
| Average Power Input (max) | W | 20 |
| Input Connectors | | TNC-Female |
| Output Connectors | | TNC-Female |
| Approx Bandwidth @ 50 dB | MHz | 11 |

Mechanical Specifications

| | | |
|------------------------|----------|---------------------|
| Width | in (mm) | 4.2 (107) |
| Depth | in (mm) | 7.5 (191) |
| Length/ Height | in (mm) | 1.3 (33) |
| Weight | lbs (kg) | 1.5 (0.68) |
| Actual shipping weight | lbs (kg) | 2 (0.91) |
| Shipping dimensions | in (mm) | 13x9x3 (330x229x76) |

Environmental Specifications

| | | |
|-------------------|---------|--------------------------|
| Temperature range | °F (°C) | -22 to +140 (-30 to +60) |
|-------------------|---------|--------------------------|



| Region | United States | Europe, Middle East and Africa | Caribbean and Latin America | Canada and rest of the world |
|-----------|------------------------|--------------------------------------|--------------------------------|--|
| Telephone | USA: 1 800 263 3275 | International: +44 (0) 1487 84 28 19 | International: +1 905 726 7676 | Canada: 1 800 263 3275 International: +1 905 727 0165 |
| E-mail | salesusa@sinclaire.com | salesuk@sinclaire.com | salesla@sinclaire.com | salescan@sinclaire.com |