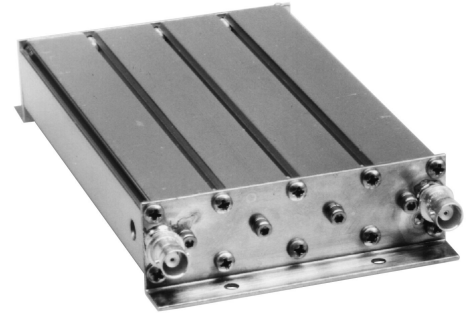


FP30401B-2-1 Preselector, 1 MHz bandwidth, compact, BNC connectors, 440-470 MHz

Also referred as: FP30401B*2-1

- Suitable for most standard multicoupling requirements
- Can be mounted directly on 1.75 " high receiver multicoupler tray
- Rugged compact construction with BNC type female connectors

The FP series preselectors are compact units that are suitable for most standard multicoupling requirements. Their size permits them to be mounted directly on the 1 3/4 in (44.5 mm) high receiver multicoupler trays.



www.sinctech.com

| Region | United States | Europe, Middle East and Africa | Caribbean and Latin America | Canada and rest of the world |
|------------------|-----------------------|--------------------------------------|--------------------------------|--|
| Telephone | USA: 1 800 263 3275 | International: +44 (0) 1487 84 28 19 | International: +1 905 726 7676 | Canada: 1 800 263 3275 International: +1 905 727 0165 |
| E-mail | salesusa@sinctech.com | salesuk@sinctech.com | salesla@sinctech.com | salescan@sinctech.com |

Product Specification Sheet
EPR 017455

FP30401B-2-1

Issue: 50

Dated: 27-08-15
Dated: 23-07-15

Electrical Specifications

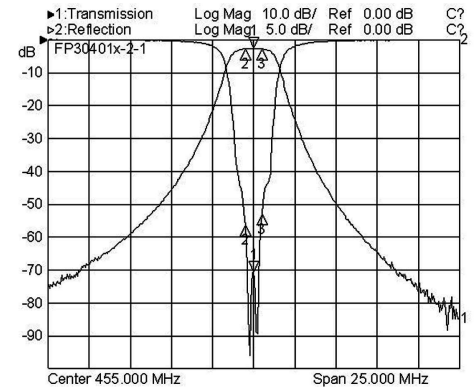
| | | |
|---------------------------------------|-----|------------|
| Frequency Range | MHz | 440 to 470 |
| Input VSWR (max) | | 1.5:1 |
| Insertion loss (typ) | dB | 3.4 |
| Impedance | Ω | 50 |
| Average Power Input (max) | W | 20 |
| Input Connectors | | BNC-Female |
| Output Connectors | | BNC-Female |
| Approx Bandwidth @ 50 dB | MHz | 11 |
| Bandwidth at specified insertion loss | MHz | 1 |

Mechanical Specifications

| | | |
|------------------------|----------|---------------------|
| Width | in (mm) | 4.2 (107) |
| Depth | in (mm) | 7.5 (191) |
| Length/ Height | in (mm) | 1.3 (33) |
| Weight | lbs (kg) | 1.5 (0.68) |
| Actual Shipping weight | lbs (kg) | 2 (0.91) |
| Shipping dimensions | in (mm) | 13x9x3 (330x229x76) |

Environmental Specifications

| | | |
|-------------------|---------|--------------------------|
| Temperature range | °F (°C) | -22 to +140 (-30 to +60) |
|-------------------|---------|--------------------------|



| Region | United States | Europe, Middle East and Africa | Caribbean and Latin America | Canada and rest of the world |
|-----------|------------------------|--------------------------------------|--------------------------------|--|
| Telephone | USA: 1 800 263 3275 | International: +44 (0) 1487 84 28 19 | International: +1 905 726 7676 | Canada: 1 800 263 3275 International: +1 905 727 0165 |
| E-mail | salesusa@sinclaire.com | salesuk@sinclaire.com | salesla@sinclaire.com | salescan@sinclaire.com |