

C3034-1-1.6

Exp multicoupler, C Series Res-Lok, pass-reject, 1.6 dB IL, 406-440 MHz

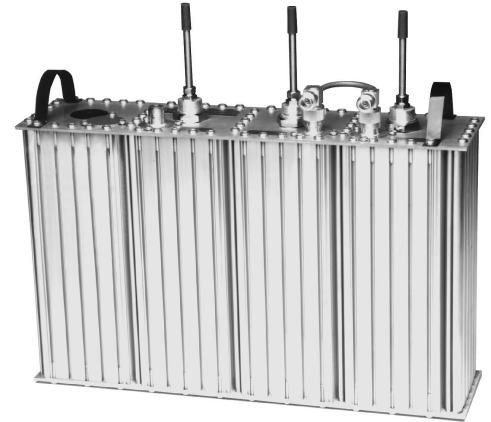
Also referred as: C3034*1-1.6

- Ease of field expandability with non-critical cable lengths
- Reduces inter-cavity cable requirements
- Supports vertical or horizontal mounting in 19 inch rack

Sinclair's C-Series multicouplers offers excellent performance combined with ease of expandability required in many multicoupling systems. Each C-Series multicoupler channel consists of a reject cavity and one or more bandpass cavities, depending on the selectivity required. The reject cavity acts as a switch, diverting the wanted channel frequency to or from the antenna, while allowing the remaining channel frequencies to flow in the antenna feed-thru line to or from the remaining C-Series multicoupler channels.

Because cable lengths between C-Series multicoupler channels are not critical, additional channels may be easily added in the field. However, in order to minimize losses due to cabling, these interconnecting cables should be as short as possible. These highly versatile combiners offer improved performance through the addition of single or dual stage isolators and/or one or more Q-circuit cavities wherever they are required.

Sinclair's more compact Res-Lok™ 'C' series multicouplers combine Sinclair's patented Res-Lok™ construction with ease of expandability required in many multicoupling systems. Each Res-Lok™ 'C' series multicoupler channel consists of a reject cavity and two or more bandpass cavities, depending on the selectivity required. The reject cavity acts as a switch, diverting the wanted channel frequency to or from the antenna, while allowing the remaining channel frequencies to flow in the antenna feed thru line to or from the remaining 'C' series multicoupler channels. Res-Lok™ construction minimizes the number of inter-cavity cables required, and also allows horizontal or vertical mounting in a 19-inch rack.



C3024 Model Shown Above

Region	United States	Europe, Middle East and Africa	Caribbean and Latin America	Canada and rest of the world
Telephone	USA: 1 800 263 3275	International: +44 (0) 1487 84 28 19	International: +1 905 726 7676	Canada: 1 800 263 3275 International: +1 905 727 0165
E-mail	salesusa@sinctech.com	salesuk@sinctech.com	salesla@sinctech.com	salescan@sinctech.com
Product Specification Sheet		C3034-1-1.6	Issue: 85	Dated: 08-10-13

Electrical Specifications

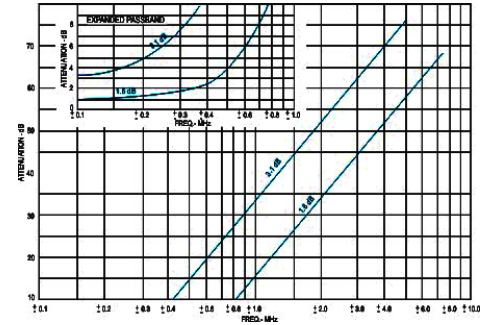
Frequency Range	MHz	406 to 440
Input VSWR (max)		1.5:1
Average Power Input (max)	W	300
Input Connectors		N-Female
Output Connectors		N-Female
Thru Line Average Power (max)	W	1000
Frequency separation (min)	MHz	1
Insertion loss (max) Tx to Ant	dB	1.6

Mechanical Specifications

Depth	in (mm)	14 (356)
Length/ Height	in (mm)	4.19 (106)
Width	in (mm)	19 (483)
Net Weight	lbs (kg)	13 (5.9)
Actual Shipping weight	lbs (kg)	25 (11.35)
Shipping dimensions	in (mm)	6x19x22 (152x483x559)

Environmental Specifications

Temperature range	°F (°C)	-40 to +140 (-40 to +60)
-------------------	---------	--------------------------



Region	United States	Europe, Middle East and Africa	Caribbean and Latin America	Canada and rest of the world
Telephone	USA: 1 800 263 3275	International: +44 (0) 1487 84 28 19	International: +1 905 726 7676	Canada: 1 800 263 3275 International: +1 905 727 0165
E-mail	salesusa@sinctech.com	salesuk@sinctech.com	salesla@sinctech.com	salescan@sinctech.com
Product Specification Sheet		C3034-1-1.6	Issue: 85	Dated: 08-10-13