

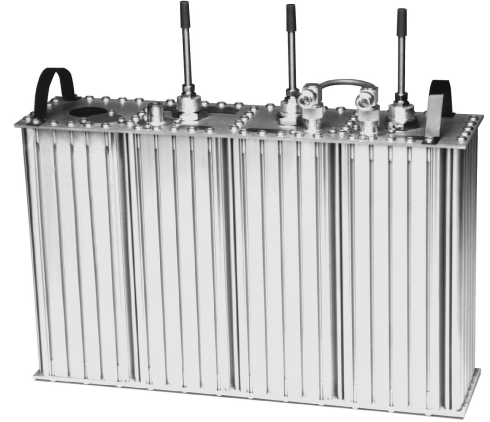
## C3024-2-1.4

Exp multicoupler, C-Series Res-Lok, pass-reject, 1.4 dB IL, 440-475 MHz

Also referred as: C3024\*2-1.4

- Ease of field expandability with non-critical inter-channel cables and 2 MHz channel spacing
- Res-Lok design reduces inter-cavity cable requirements and losses
- Supports vertical or horizontal mounting in 19 inch rack
- Two band pass cavities and one reject cavity

The C-3024 consists of two bandpass cavities in conjunction with a reject cavity. This 'C' Series channel configuration is used where significant channel separation is available. Res-Lok construction minimizes the number of inter-cavity cables required, and also allows horizontal or vertical mounting in a 19 inch rack. Because cable lengths between 'C' series multicoupler channels are not critical, additional channels may be easily added in the field. However, in order to minimize losses due to cabling, these interconnecting cables should be as short as possible.



Region	United States	Europe, Middle East and Africa	Caribbean and Latin America	Canada and rest of the world
<b>Telephone</b>	USA: 1 800 263 3275	International: +44 (0) 1487 84 28 19	International: +1 905 726 7676	Canada: 1 800 263 3275 International: +1 905 727 0165
<b>E-mail</b>	salesusa@sinctech.com	salesuk@sinctech.com	salesla@sinctech.com	salescan@sinctech.com

### Electrical Specifications

Frequency Range	MHz	440 to 475
Input VSWR (max)		1.5:1
Input Connectors		N-Female
Output Connectors		N-Female
Thru Line Average Power (max)	W	1000
Frequency separation (min)	MHz	1
Insertion loss (max) Tx to Ant	dB	1.4
Average Input Power (max)	W	300

### Notes

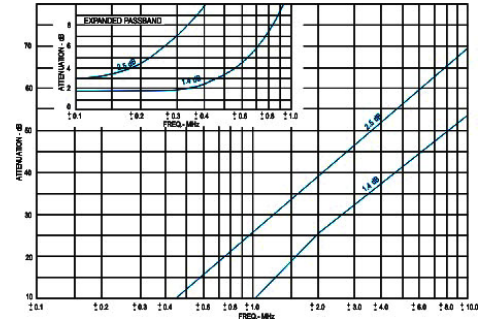
\*1 : 300W @ 1.4dB/ 190W @ 2.5dB

### Mechanical Specifications

Depth	in (mm)	14 (356)
Length/ Height	in (mm)	4.19 (106)
Width	in (mm)	19 (483)
Net Weight	lbs (kg)	13 (5.9)
Actual Shipping weight	lbs (kg)	25 (11.35)
Shipping dimensions	in (mm)	19x8x22 (483x203x559)

### Environmental Specifications

Temperature range	°F (°C)	-40 to +140 (-40 to +60)
-------------------	---------	--------------------------



www.sinclaire.com

Region	United States	Europe, Middle East and Africa	Caribbean and Latin America	Canada and rest of the world
Telephone	USA: 1 800 263 3275	International: +44 (0) 1487 84 28 19	International: +1 905 726 7676	Canada: 1 800 263 3275 International: +1 905 727 0165
E-mail	salesusa@sinclaire.com	salesuk@sinclaire.com	salesla@sinclaire.com	salescan@sinclaire.com