

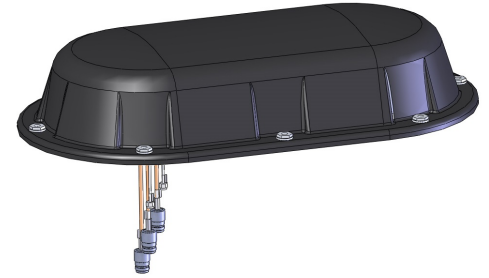
SM2601D(PTC-WI-GNM) GNSS, 220MHz PTC, WiFi, 694-2700MHz diversity low profile transport antenna

- 5 element antenna, one 220MHz PTC, dual 694-2700 MHz full band, one GNSS and one WiFi
- The 694-2700 MHz twin elements are expandable for multiple radio system or diversity uses
- A maximum height of 4-1/4 inches complies with restriction for locomotives and other vehicles
- Black weather resistant and fire rated radome provides excellent environmental protection

The SM2601D series antenna is intended primarily for wireless coverage in transportation applications. This antenna is designed for ease of installation and minimal visual impact. It features a low profile and unobtrusive black housing that is perfect for mounting to a typical metal vehicle rooftop.

SM2601D comes with 5 ports, one for PTC band, one for GNSS, one for WiFi and two broadband ports for 694-2700 MHz full band. The two broadband ports have identical broadband radiation element, which can be used for diversity or MIMO purpose. They can also be used for different radios providing maximal flexibility for a multiple radio system. It can also be expanded for multiple uses quickly without interference with the existing service.

The PTC port covers 219-223MHz. WiFi port covers 2400-6000MHz full band applicable for various WiFi systems. The GNSS module features a high-gain low-noise amplifier and a saw filter, and it supports GPS, Galileo, GLONASS, and Beidou.



Antenna may not appear exactly as picture.

Connector and pigtail configuration:

Radio port	Connector	Pigtail length (nominal)
Cell	SMA-male	30 cm (12")
WiFi	TNC-male	30 cm (12")
PTC	N-male	30 cm (12")
GNSS	BNC-male	30 cm (12")

Custom cable length or connector configurations are available, please contact your Sinclair Sales Representative or Customer Service Representative for more information.

Region	United States	Europe, Middle East and Africa	Caribbean and Latin America	Canada and rest of the world
Telephone	USA: 1 800 263 3275	International: +44 (0) 1487 84 28 19	International: +1 905 726 7676	Canada: 1 800 263 3275 International: +1 905 727 0165
E-mail	salesusa@sinctech.com	salesuk@sinctech.com	salesla@sinctech.com	salescan@sinctech.com
Product Specification Sheet		SM2601D(PTC-WI-GNM)	Issue: 0	Dated: 20-11-18

Electrical Specifications

Frequency Range 1 (F1)	MHz	219 to 223	
Input VSWR 1 (nominal)		1.5:1	
Frequency Range 2 (F2)	MHz	694 to 2700	
Bandwidth (F2)	MHz	2006	
Input VSWR 2 (nominal)		1.5:1	*1
Frequency Range 3 (F3)	MHz	694 to 2700	
Bandwidth (F3)	MHz	2006	
Input VSWR 3 (nominal)		1.5:1	*2
Frequency Range 4 (F4)	MHz	2400 to 6000	
Input VSWR 4 (nominal)		1.5:1	*3
Connectors	PTC=NM, CELL=SMA-male, WiFi=TM, GNS=BM		
Gain (nominal)	dBd (dBi)	unity (2.1)	
Polarization		vertical	
Impedance	Ω	50	
Pattern		Omni-directional	
Average Input Power (max)	W	5~125	*4
Lightning protection		DC ground	*5
GNSS Frequency	MHz	1559-1606	
GNSS Polarization		RHCP	
GNSS Output Impedance	Ω	50	
GNSS VSWR(max)		1.5:1	
GNSS Peak Gain		>=4.5 dBi	
GNSS Power Gain (typ)	dB	30	*6
GNSS Supply Voltage Range	VDC	3 to 16	
GNSS Current Consumption (typ)	mA	20	
GNSS Noise Figure (typ)	dB	2	
GNSS Out of Band Rejection 1		>40dB @ <1500MHz	
GNSS Out of Band Rejection 2		>45dB @ <1525MHz	
GNSS Out of Band Rejection 3		>45dB @ >1630MHz	

Notes

- *1 : Max 2:1 at frequency band edges
- *2 : Max 2:1 at frequency band edges
- *3 : Max 2:1 at frequency band edges
- *4 : 125W for the PTC port.
- *5 : Except for WiFi port
- *6 : LNA gain variance ±2dB

Mechanical Specifications

Width	in (mm)	11.5 (292)
Length	in (mm)	20.88 (530)
Height	in (mm)	4.25 (108)
Weight	lbs (kg)	12.3 (5.58)
Actual shipping weight	lbs (kg)	16.3 (7.4)
Shipping dimensions	in (mm)	23x14x10 (584x356x254)
Ground Plane (min)	in (mm)	36x48
Radome Colour		Black

Environmental Specifications

Temperature range	°F (°C)	-40 to +140 (-40 to +60)
Wind Loading Area (Flat Plate Equivalent)	ft² (m²)	0.2 (0.02)
Horizontal Wind Resistance		5.03lb@100mph

Region	United States	Europe, Middle East and Africa	Caribbean and Latin America	Canada and rest of the world
Telephone	USA: 1 800 263 3275	International: +44 (0) 1487 84 28 19	International: +1 905 726 7676	Canada: 1 800 263 3275 International: +1 905 727 0165
E-mail	salesusa@sinctech.com	salesuk@sinctech.com	salesla@sinctech.com	salescan@sinctech.com
Product Specification Sheet		SM2601D(PTC-WI-GNM)	Issue: 0	Dated: 20-11-18