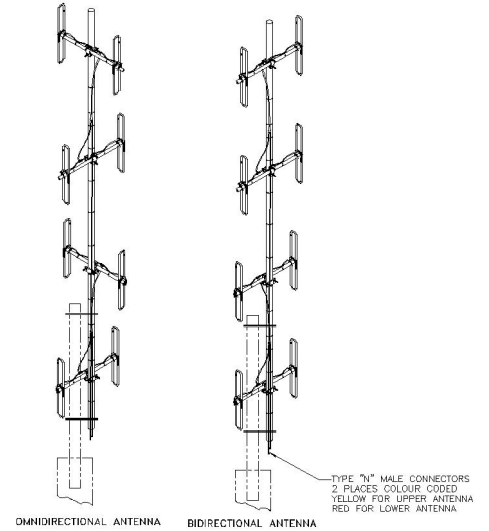


SD235D-SF1PASNM(D00) Exposed dipole array, 3/5.5 dBd, dual, field adj., 118-138 MHz

Also referred as: SRL235/235NM\*1

- A dual antenna perfectly suited for multicoupled systems due to its broad band
- Omni-directional (3 dBd) or bi-directional (5.5 dBd) pattern can be easily changed in the field
- 300 W power handling capability

SD235D-SF1PASNM(D00) is a highly versatile broadband dual antenna featuring omni-directional or bi-directional pattern coverage. The pattern may be easily changed in the field. Because this antenna covers the 118-138 MHz frequency band, it is ideally suited for use in multicoupled systems.



www.sinctech.com

Region	United States	Europe, Middle East, and Africa	Canada, Caribbean, and Latin America	Asia-Pacific
Telephone	1 800 263 3275	+1 905 727 0165 ext 232	Canada: 1 905 726 7676 International: +1 905 726 7676	+1 905 727 0165 ext 287
E-mail	salesusa@sinctech.com	salesemea@sinctech.com	salescan@sinctech.com	salesasia@sinctech.com
Product Specification Sheet		SD235D-SF1PASNM(D00)	Issue: 1	Dated: 26-03-24
EPR 018328				Dated: 26-03-24
Customer Tech Manual 006035				

**Electrical Specifications**

Frequency Range	MHz	118 to 138
Connector		N-Male
Input VSWR (max)		1.5:1
Polarization		vertical
Impedance	$\Omega$	50
Pattern		Omni or Bi-directional, Adjustable
Vertical beamwidth (typ)	degrees	34
Average Input Power (max)	W	300
Isolation between sections (nom)	dB	30
Grounding		All metal parts DC-grounded

**Notes**

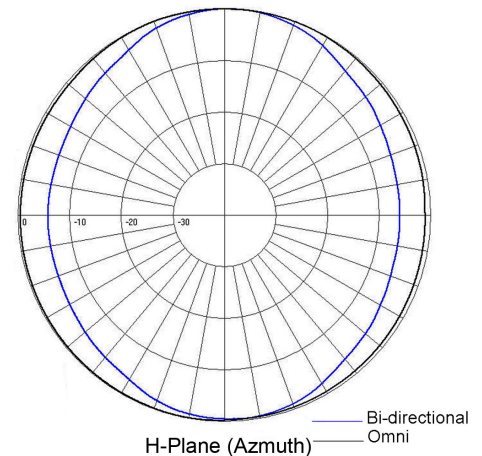
- \*1 : SMK kit (not included) is needed for side mount at omni configuration, available separately.
- \*2 : 125 lbs and 40 lbs
- \*3 : 3 packages

**Mechanical Specifications**

Width	in (mm)	39.25 (997)	
Depth	in (mm)	39.25 (997)	
Length/ Height	in (mm)	330 (8382)	
Base pipe diameter	in (mm)	4 (102)	
Radiating element material		aluminum	
Base pipe material		aluminum	
Weight	lbs (kg)	137 (62.2)	
Weight iced (1/2" ice)	lbs (kg)	271 (123.03)	
Mounting Hardware (Optional)		Clamp147, Clamp005, or Clamp015	
Mounting configurations		Top mount or side mount	*1
Actual shipping weight	lbs (kg)	165 (74.91)	*2
Shipping dimensions	in (mm)	336x42x12 (8534x1067x305)	*3

**Environmental Specifications**

Temperature range	$^{\circ}\text{F}$ ( $^{\circ}\text{C}$ )	-40 to +140 (-40 to +60)
Wind Loading Area (Flat Plate Equivalent)	$\text{ft}^2$ ( $\text{m}^2$ )	8.99 (0.84)
Wind Loading Area (1/2" ice)	$\text{ft}^2$ ( $\text{m}^2$ )	14.9 (1.38)
Rated wind velocity (no ice)	mph (km/h)	135 (217)
Rated wind velocity (1/2" radial ice)	mph (km/h)	95 (153)
Lateral Thrust (100 mph No Ice)	lbs (N)	316 (1405.6)
Bending moment (100 mph No Ice)	ft-lbs (Nm)	3158 (4263.3)



Region	United States	Europe, Middle East, and Africa	Canada, Caribbean, and Latin America	Asia-Pacific
Telephone	1 800 263 3275	+1 905 727 0165 ext 232	Canada: 1 905 726 7676 International: +1 905 726 7676	+1 905 727 0165 ext 287
E-mail	salesusa@sinctech.com	salesemea@sinctech.com	salescan@sinctech.com	salesasia@sinctech.com