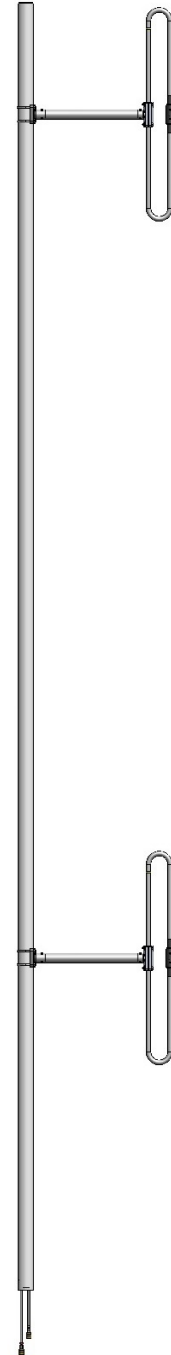


SD210D-HF2P4LDF Dual 1 dipole, 2.5 dBd, offset, HD, 138-174 MHz

- Exceptionally wide bandwidth covering 138-174 MHz
- 2.5 dBd gain with offset pattern
- Can be top or side mount (Universal mount)
- Low PIM design ideal for trunking system

The SD210D series of heavy-duty exposed dipole antennas are unique in their high efficiency and exceptionally wide bandwidth, covering the frequency range 138-174 MHz at a VSWR of 1.5:1 or better. Because of its bandwidth, the SD210D series is perfectly suited for multicoupled systems.



Antenna may not appear exactly as shown.

Region	United States	Europe, Middle East, and Africa	Canada, Caribbean, and Latin America	Asia-Pacific
Telephone	1 800 263 3275	+1 905 727 0165 ext 232	Canada: 1 905 726 7676 International: +1 905 726 7676	+1 905 727 0165 ext 287
E-mail	salesusa@sinctech.com	salesemea@sinctech.com	salescan@sinctech.com	salesasia@sinctech.com
Product Specification Sheet		SD210D-HF2P4LDF	Issue: 1	Dated: 22-04-24

**Electrical Specifications**

Frequency Range	MHz	138 to 174	
Bandwidth	MHz	36	
Connector		7/16 DIN-Female	
Gain (nominal)	dBd (dBi)	2.5 (4.6)	*1
Input VSWR (max)		1.5:1	
Polarization		vertical	
Impedance	Ω	50	
Pattern		Offset	
Horizontal beamwidth (typ)	degrees	210	*2
Vertical beamwidth (typ)	degrees	68	*3
Average Input Power (max)	W	300	
Isolation port to port (typ)	dB	30	
Passive intermod. (2x20W, 3rd ord.)	dBc	-150	
Grounding		All metal parts DC-grounded	

**Notes**

- \*1 : ±1dB
- \*2 : ±10%
- \*3 : ±10%
- \*4 : Qty: 2

**Ordering Information**

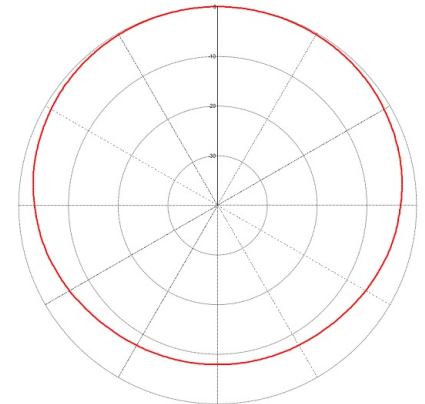
Clamps must be ordered separately.

**Mechanical Specifications**

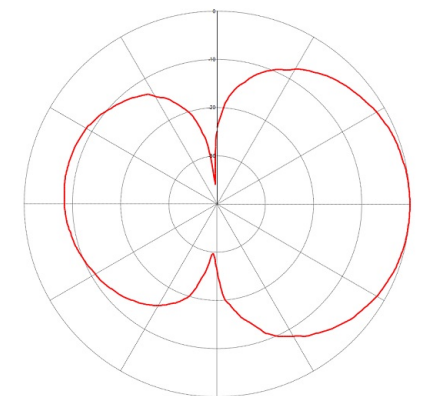
Width	in (mm)	24 (610)	
Depth	in (mm)	4.5 (114)	
Length/ Height	in (mm)	156 (3962)	
Base pipe diameter	in (mm)	2.38 (60)	
Base pipe mounting length	in (mm)	48 (1219)	
Radiating element material		aluminum	
Base pipe material		aluminum	
Weight	lbs (kg)	9 (4.09)	
Weight iced (1/2" ice)	lbs (kg)	26 (11.8)	
Mounting Hardware (Optional)		Clamp130	*4
Mounting configurations		upright	

**Environmental Specifications**

Temperature range	°F (°C)	-40 to +140 (-40 to +60)
Wind Loading Area (Flat Plate Equivalent)	ft <sup>2</sup> (m <sup>2</sup> )	2.6 (0.24)
Wind Loading Area (1/2" ice)	ft <sup>2</sup> (m <sup>2</sup> )	4.2 (0.39)
Survival wind velocity (no ice)	mph (km/h)	248 (399)
Rated wind velocity (no ice)	mph (km/h)	155 (250)
Rated wind velocity (1/2" radial ice)	mph (km/h)	120 (193)
Lateral Thrust (100 mph No Ice)	lbs (N)	99 (440.4)
Torsional moment (100 mph No Ice)	ft-lbs (Nm)	35 (47.3)
Bending moment (100 mph No Ice)	ft-lbs (Nm)	406 (548.1)
Tip deflection (100 mph No Ice)	degrees	0.9



Horizontal



Vertical - 0° downtilt

Region	United States	Europe, Middle East, and Africa	Canada, Caribbean, and Latin America	Asia-Pacific
Telephone	1 800 263 3275	+1 905 727 0165 ext 232	Canada: 1 905 726 7676 International: +1 905 726 7676	+1 905 727 0165 ext 287
E-mail	salesusa@sinctech.com	salesemea@sinctech.com	salescan@sinctech.com	salesasia@sinctech.com
Product Specification Sheet		SD210D-HF2P4LDF	Issue: 1	Dated: 22-04-24