

<b>8-Port Antenna</b>	<b>R1</b>	<b>R2</b>	<b>Y1</b>	<b>Y2</b>
<b>Frequency Range</b>	698-960	698-960	1710-2690	1710-2690
<b>HBPW</b>	65	65	65	65
<b>Gain</b>	15	15	18	18
<b>Tilt</b>	2-12	2-12	2-12	2-12

Model Number		CP8-2L2M-65-15/18RT-1A		
<b>Electrical specifications</b>				
		<b>R1, R2</b>		
Frequency Range(MHz)		698-960		
		698-824	806-896	880-960
Gain(dBi)	at mid Tilt	13.8	14.2	14.6
	over all Tilts	13.6±0.6	14.0±0.6	14.4±0.6
Horizontal Pattern:				
Azimuth Beamwidth(o)		64±6.5	60±5.5	57±6.5
Front to back Ratio Co-polar, ±30°(dB)		>25	>25	>25
Cross Polar Discrimination at Boresight(dB)		>17	>17	>18
Vertical Pattern:				
Elevation Beamwidth(o)		14.9±0.7	13.4±0.7	12.3±0.8
Electrical Downtilt(o)		2-12, continuously adjustable		
First Upper Side Lobe Suppression (dB)		>15	>15	>15
Cross-Polar Isolation (dB)		> 25		
Port to Port Isolation (dB)		> 25(R1//R2), > 28(R1//Y1,Y2)		
Max. Average Input Power per Port (W)		250		

Preliminary values based on NGMN-P-BASTA V12.0

Region	United States	Europe, Middle East, and Africa	Canada, Caribbean, and Latin America	Asia-Pacific
Telephone	1 800 263 3275	+1 905 727 0165 ext. 232	Canada: 1 905 726 7676 International: +1 905 726 7676	+1 905 727 0165 ext. 287
E-mail	salesusa@sinctech.com	salesemea@sinctech.com	salescan@sinctech.com	salesasia@sinctech.com
Product Specification Sheet		CP8-2L2M-65-15/18RT-1A	Issue 1.5	Dated: 2-26-2024

Model Number		CP8-2L2M-65-15/18RT-1A				
		<b>Y1,Y2</b>				
Frequency Range(MHz)		1710-2690				
		1710-1880	1850-1990	1920-2170	2300-2400	2490-2690
Gain(dBi)	at mid Tilt	16.8	17.0	17.4	17.6	17.8
	over all Tilts	16.6±0.5	16.8±0.5	17.2±0.5	17.4±0.5	17.6±0.5
Horizontal Pattern:						
Azimuth Beamwidth(o)		68±6.5	65±6.5	62±6.5	58±5.0	58±6.5
Front to back Ratio Co-polar, ±30°(dB)		≥25	≥25	>25	≥25	≥25
Cross Polar Discrimination at Boresight(dB)		>16	>16	>17	>18	>18
Vertical Pattern:						
Elevation Beamwidth(o)		6.8±0.5	6.4±0.4	6.0±0.5	5.2±0.5	4.8±0.6
Electrical Downtilt(o)		2-12, continuously adjustable				
First Upper Side Lobe Suppression (dB)		>15	>15	>15	>15	>15
Cross-Polar Isolation (dB)		> 26				
Port to Port Isolation (dB)		> 28				
Max. Average Input Power per Port (W)		200				

**Preliminary values based on NGMN-P-BASTA V12.0**

Electrical specifications, all systems:	
Polarization	+45° /-45°
Impedance (Ω)	50
VSWR	<1.5
Return Loss (dB)	> 14
PIM3 (2x43 dBm carrier) (dBc)	<-153
Lightning Protection	DC Ground

**Preliminary values based on NGMN-P-BASTA V12.0**



Region	United States	Europe, Middle East, and Africa	Canada, Caribbean, and Latin America	Asia-Pacific
Telephone	1 800 263 3275	+1 905 727 0165 ext. 232	Canada: 1 905 726 7676 International: +1 905 726 7676	+1 905 727 0165 ext. 287
E-mail	salesusa@sinctech.com	salesemea@sinctech.com	salescan@sinctech.com	salesasia@sinctech.com
Product Specification Sheet		CP8-2L2M-65-15/18RT-1A	Issue 1.5	Dated: 2-26-2024

<b>Model Number</b>	<b>CP8-2L2M-65-15/18RT-1A</b>
<b>Mechanical Specifications</b>	
Connector Type	4.3/10(F) x8
Connector position	Bottom
Electrical Tilt Control	Integrated RET, Each Band Individually Adjustable
Mechanical Tilt Range	0-16
Radome Material	Fiberglass
Antenna Weight(kg)	20/24 (clamps incl.)
Bracket Diameter(mm)	50-125
Maximum Wind Speed(km/h)	200
Wind Load frontal [N] at 150 Km/h	650
Wind Load rear side [N] at 150 Km/h	720
Wind Load lateral [N] at 150 Km/h	340
Operating Temperature (°C)	-40 ~+60
Antenna Dimensions (H x W x D) (mm)	1497x469x205
Packing Size (H x W x D) (mm)	1717x544x280

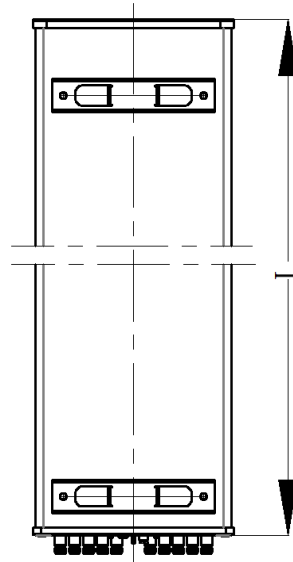
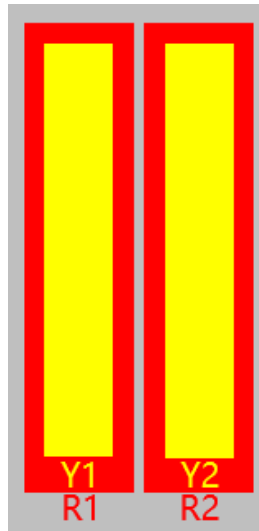
**Preliminary values based on NGMN-P-BASTA V12.0**

<b>Integrated RET Specifications</b>	
Protocols	Compliant With AISGV2.0 And 3GPP
Supply Voltage, VDC	10-30DC
Power Consumption	<2W (standby); < 10W (motor actived)
Safety Standard	Compliant to EN 60950/UL 60950/ RoHs (Restriction of Hazardous Substances), CE
Lightning Protection Rating	IEC 61000-4-5 Current Pulse Profile, Line to Ground 8/20 us @ 6kA ≥±5 Repetitions Line to line , 8/20 us @ 3kA ≥±5 Repetitions
Connectors	2 x 8 Pins Connector According To IEC60130-9 AND AISG 1 x Daisy Chain In : Male 1 x Daisy Chain Out : Female Pin3:RS485B; Pin5:RS485A; Pin6:10~30V; Pin7: DC return Female connector: 4 PINs ,Male connector: 4 PINs

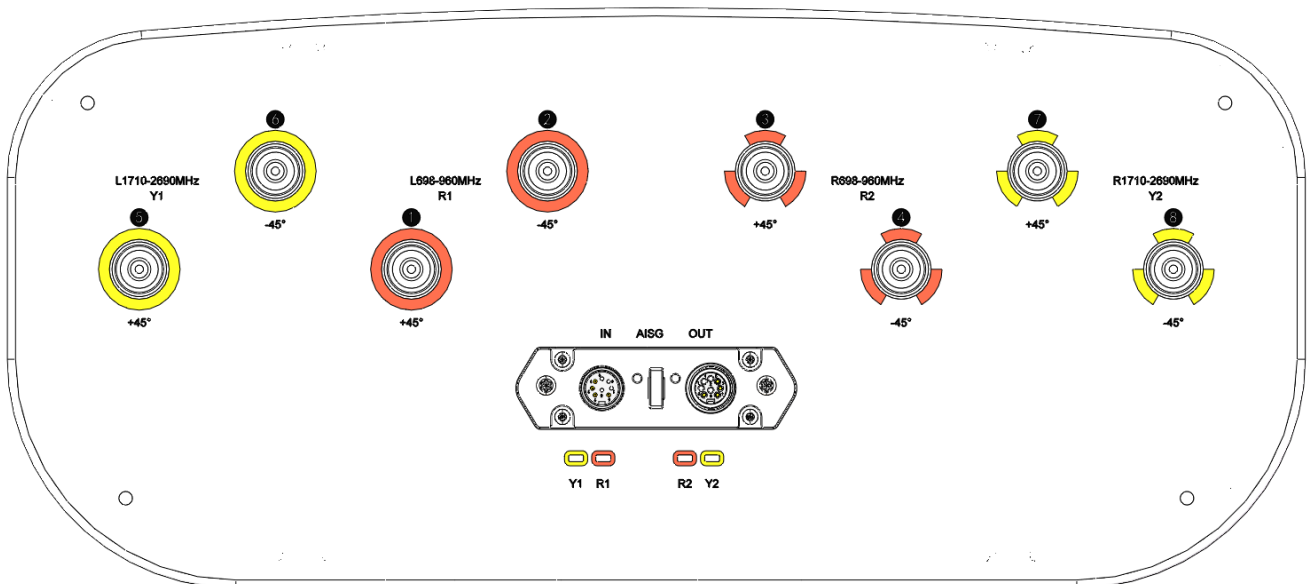
**Preliminary values based on NGMN-P-BASTA V12.0**

<b>Region</b>	<b>United States</b>	<b>Europe, Middle East, and Africa</b>	<b>Canada, Caribbean, and Latin America</b>	<b>Asia-Pacific</b>
Telephone	1 800 263 3275	+1 905 727 0165 ext. 232	Canada: 1 905 726 7676 International: +1 905 726 7676	+1 905 727 0165 ext. 287
E-mail	salesusa@sinctech.com	salesemea@sinctech.com	salescan@sintech.com	salesasia@sinctech.com
Product Specification Sheet		CP8-2L2M-65-15/18RT-1A	Issue 1.5	Dated: 2-26-2024

### Arrays of the antenna



### Ports of the antenna



Region	United States	Europe, Middle East, and Africa	Canada, Caribbean, and Latin America	Asia-Pacific
Telephone	1 800 263 3275	+1 905 727 0165 ext. 232	Canada: 1 905 726 7676 International: +1 905 726 7676	+1 905 727 0165 ext. 287
E-mail	salesusa@sintech.com	salesemea@sintech.com	salescan@sintech.com	salesasia@sintech.com
Product Specification Sheet		CP8-2L2M-65-15/18RT-1A	Issue 1.5	Dated: 2-26-2024