

16-Port Antenna	R1	R2	Y1, Y3, Y5	Y2, Y4, Y6
Frequency Range	698-960	698-960	1710-2690	1710-2690
HBPW	65	65	65	65
Gain	17	17	18	17.5
Tilt	2-12	2-12	2-12	2-12

Model Number		CP16-2L6M-65-17/18RT-1A		
Electrical specifications				
		R1, R2		
Frequency Range(MHz)		698-960		
		698-824	806-896	880-960
Gain(dBi)	at mid Tilt	16.0	16.3	16.6
	over all Tilts	15.8±0.6	16.1±0.6	16.4±0.6
Horizontal Pattern:				
Azimuth Beamwidth(o)		66±6.5	62±5.5	58±6.5
Front to back Ratio, ±30°(dB)		>23	>24	>25
Cross Polar Discrimination at Boresight(dB)		>17	>17	>18
Vertical Pattern:				
Elevation Beamwidth(o)		8.2±0.7	7.4±0.7	6.8±0.8
Electrical Downtilt(o)		2-12, continuously adjustable		
First Upper Side Lobe Suppression (dB)		>15	>15	>15
Cross-Polar Isolation (dB)		> 25		
Port to Port Isolation (dB)		> 25(R1//R2), > 28(R1//Y1,Y2,Y3,Y4,Y5,Y6)		
Max. Average Input Power per Port (W)		250		

Preliminary values based on NGMN-P-BASTA V12.0

Region	United States	Europe, Middle East, and Africa	Canada, Caribbean, and Latin America	Asia-Pacific
Telephone	1 800 263 3275	+1 905 727 0165 ext. 232	Canada: 1 905 726 7676 International: +1 905 726 7676	+1 905 727 0165 ext. 287
E-mail	salesusa@sinctech.com	salesemea@sinctech.com	salescan@sinctech.com	salesasia@sinctech.com
Product Specification Sheet		CP16-2L6M-65-17/18RT-1A	Issue 1.5	Dated: 2-26-2024

Model Number		CP16-2L6M-65-17/18RT-1A				
		Y1, Y3, Y5				
Frequency Range(MHz)		1710-2690				
		1710-1880	1850-1990	1920-2170	2300-2400	2490-2690
Gain(dBi)	at mid Tilt	16.4	16.8	17.0	17.4	17.6
	over all Tilts	16.2±0.5	16.6±0.5	16.8±0.5	17.2±0.5	17.4±0.5
Horizontal Pattern:						
Azimuth Beamwidth(o)		68±6.5	65±6.5	62±6.5	58±5.0	58±6.5
Front to back Ratio, ±30°(dB)		≥25	≥25	>25	≥25	≥25
Cross Polar Discrimination at Boresight(dB)		>16	>16	>17	>18	>18
Vertical Pattern:						
Elevation Beamwidth(o)		7.4±0.5	6.8±0.4	6.4±0.5	5.9±0.5	5.4±0.6
Electrical Downtilt(o)		2-12, continuously adjustable				
First Upper Side Lobe Suppression (dB)		>15	>15	>15	>15	>15
Cross-Polar Isolation (dB)		> 26				
Port to Port Isolation (dB)		> 26				
Max. Average Input Power per Port (W)		200				

Preliminary values based on NGMN-P-BASTA V12.0

Model Number		CP16-2L6M-65-17/18RT-1A				
		Y2, Y4, Y6				
Frequency Range(MHz)		1710-2690				
		1710-1880	1850-1990	1920-2170	2300-2400	2490-2690
Gain(dBi)	at mid Tilt	16.2	16.6	16.8	17.2	17.2
	over all Tilts	16.0±0.5	16.4±0.5	16.6±0.5	17.0±0.5	17.0±0.5
Horizontal Pattern:						
Azimuth Beamwidth(o)		68±6.5	65±6.5	62±6.5	58±5.0	58±6.5
Front to back Ratio, ±30°(dB)		≥25	≥25	>25	≥25	≥25
Cross Polar Discrimination at Boresight(dB)		>16	>16	>17	>18	>18
Vertical Pattern:						
Elevation Beamwidth(o)		6.8±0.5	6.4±0.4	6.0±0.5	5.2±0.5	4.8±0.6
Electrical Downtilt(o)		2-12, continuously adjustable				
First Upper Side Lobe Suppression (dB)		>15	>15	>15	>15	>15
Cross-Polar Isolation (dB)		> 26				
Port to Port Isolation (dB)		> 26				
Max. Average Input Power per Port (W)		200				

Preliminary values based on NGMN-P-BASTA V12.0

Region	United States	Europe, Middle East, and Africa	Canada, Caribbean, and Latin America	Asia-Pacific
Telephone	1 800 263 3275	+1 905 727 0165 ext. 232	Canada: 1 905 726 7676 International: +1 905 726 7676	+1 905 727 0165 ext. 287
E-mail	salesusa@sinctech.com	salesemea@sinctech.com	salescan@sintech.com	salesasia@sinctech.com
Product Specification Sheet		CP16-2L6M-65-17/18RT-1A	Issue 1.5	Dated: 2-26-2024

Electrical specifications, all systems:	
Polarization	+45° /-45°
Impedance (Ω)	50
VSWR	<1.5
Return Loss (dB)	> 14
PIM3 (2x43 dBm carrier) (dBc)	<-150
Lightning Protection	DC Ground

Preliminary values based on NGMN-P-BASTA V12.0



Model Number	CP16-2L6M-65-17/18RT-1A
---------------------	--------------------------------

Mechanical Specifications

Connector Type	4.3/10(F) x 16
Connector position	Bottom
Electrical Tilt Control	Integrated RET, Each Band Individually Adjustable
Mechanical Tilt Range	0-10
Radome Material	Fiberglass
Antenna Weight(kg)	40/45.5 (clamps incl.)
Bracket Diameter(mm)	50-125
Maximum Wind Speed(km/h)	200
Wind Load frontal [N] at 150 Km/h	800
Wind Load rear side [N] at 150 Km/h	755
Wind Load lateral [N] at 150 Km/h	335
Operating Temperature (°C)	-40 ~+60
Antenna Dimensions (H x W x D) (mm)	2697x469x205
Packing Size (H x W x D) (mm)	2930x544x280

Preliminary values based on NGMN-P-BASTA V12.0

Integrated RET Specifications

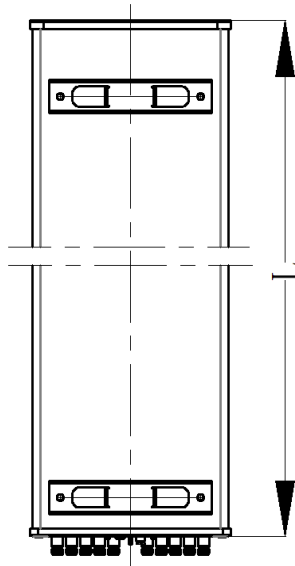
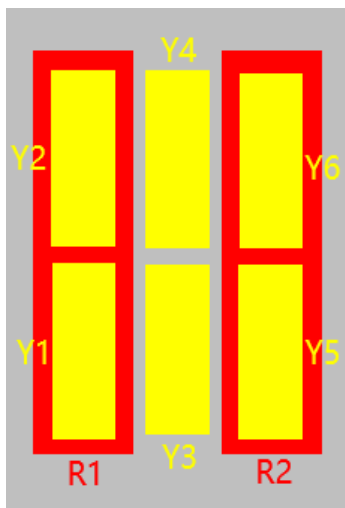
Protocols	Compliant With AISGV2.0 And 3GPP
Supply Voltage, VDC	10-30DC

Power Consumption	<2W (standby); < 10W (motor active)
Safety Standard	Compliant to EN 60950/UL 60950/ RoHs (Restriction of Hazardous Substances), CE
Lightning Protection Rating	IEC 61000-4-5 Current Pulse Profile, Line to Ground 8/20 us @ 6kA ≥±5 Repetitions Line to line , 8/20 us @ 3kA ≥±5 Repetitions
Connectors	2 x 8 Pins Connector According To IEC60130-9 AND AISG 1 x Daisy Chain In : Male 1 x Daisy Chain Out : Female Pin3:RS485B; Pin5:RS485A; Pin6:10~30V; Pin7: DC return Female connector: 4 PINs ,Male connector: 4 PINs

Preliminary values based on NGMN-P-BASTA V12.0

Region	United States	Europe, Middle East, and Africa	Canada, Caribbean, and Latin America	Asia-Pacific
Telephone	1 800 263 3275	+1 905 727 0165 ext. 232	Canada: 1 905 726 7676 International: +1 905 726 7676	+1 905 727 0165 ext. 287
E-mail	salesusa@sinctech.com	salesemea@sinctech.com	salescan@sintech.com	salesasia@sinctech.com
Product Specification Sheet		CP16-2L6M-65-17/18RT-1A	Issue 1.5	Dated: 2-26-2024

Arrays of the antenna



L=2697mm

Ports of the antenna

