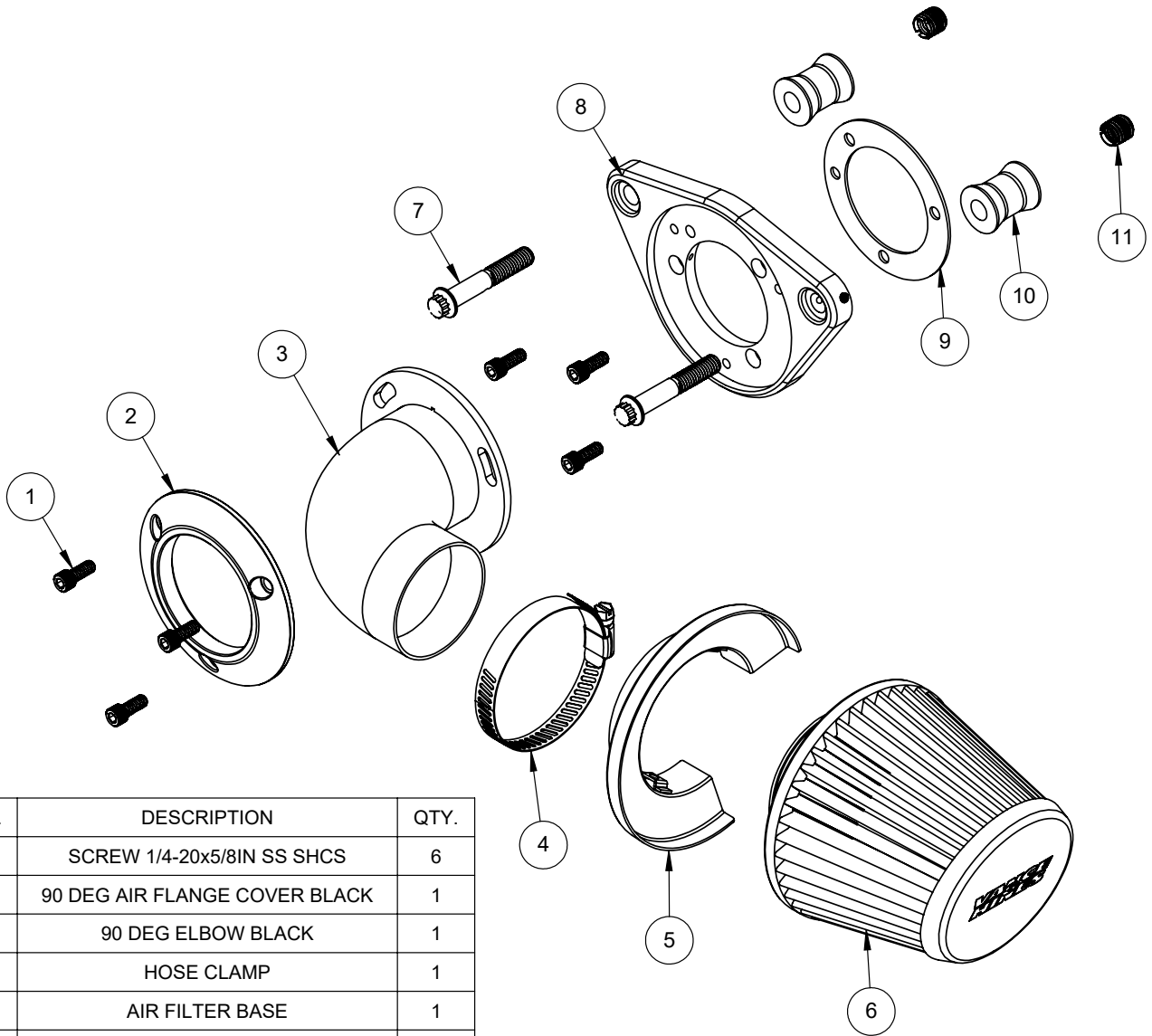


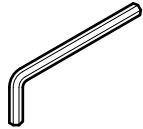
Congratulations, you have purchased the finest air intake system available for your motorcycle. Your Vance & Hines intake is designed and crafted for performance, quality, and style. Please follow the instructions below, check air intake system for missing or damaged parts and if you need any assistance please contact our technical support line (562) 921-7461.

Exempt from emissions tampering regulations under CARB EO# D-632-6 for 2007-2022 Harley-Davidson Sportster models.

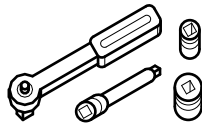


ITEM NO.	DESCRIPTION	QTY.
1	SCREW 1/4-20x5/8IN SS SHCS	6
2	90 DEG AIR FLANGE COVER BLACK	1
3	90 DEG ELBOW BLACK	1
4	HOSE CLAMP	1
5	AIR FILTER BASE	1
6	AIR FILTER BLACK	1
7	12 PT BREATHER BOLT 2.2	2
8	AIR INTAKE SPACER	1
9	THROTTLE BODY GASKET	1
10	STANDOFF BLK	2
11	3/8-16 EZ THREAD INSERT	2

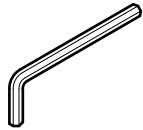
## TOOLS REQUIRED



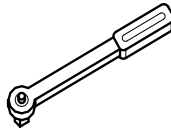
**T27 Torx Wrench**



**1/4" or 3/8" Drive Ratchet  
9/16", 7mm Hex Socket  
3/8" 12 Point Socket**

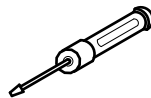


**Allen Wrenches: 3/16"**



**Inch-Pound Torque  
Wrench**

**Loctite 243 (blue)**



**Phillips Screwdriver  
7mm Nut Driver**

## OEM SYSTEM REMOVAL

1. Take off the air filter cover by removing the two countersink screws in the filter cover.
2. This will expose the filter element, which is then removed by taking out the three Torx head cap screws.
3. Remove the two breather bolts that secure the backing plate to the cylinder heads.
4. Now remove the backing plate and gasket from the throttle body. NOTE: Be sure that the surface is clean and dry and that no gasket material remains stuck to it.
5. Remove the support bracket from the throttle body.
6. None of the OEM parts will be reused for this installation.

## V&H AIR INTAKE INSTALLATION

1. For a clear understanding of this installation, it is best to refer to the exploded view diagram while reading these instructions.
2. When installing or servicing the air cleaner, apply Loctite 243 (blue) to threads of all fasteners.
3. Install the two cylinder head inserts (**11**) using the following method. Thread a 3/8"-16 bolt through the insert and thread both the bolt and insert completely into the breather hole in such a way that it is flush to the cylinder head, then remove the 3/8"-16 bolt leaving the inserts in place.
4. Sandwich the throttle body gasket (**9**) between the air intake spacer (**8**) and the throttle body using three 1/4"-20 x 5/8" screws (**1**). **NOTE:** Do not tighten at this time.
5. Install standoffs (**10**) between cylinder head and air intake spacer (**8**) using two 12-point breather bolts (**7**). Tighten to 84-120 in-lbs. **NOTE:** Standoffs are symmetrical and can be installed in either direction.
6. Tighten three 1/4"-20 x 5/8" screws (**1**) to 40-60 in-lbs.
7. Slide cover ring (**2**) onto the 90 degree tube (**3**). Then use three 1/4"-20 x 5/8" screws (**1**) to mount cover ring (**2**) and 90 degree tube (**3**) on to the air intake spacer (**8**). Tighten screw while aligning the 90 degree tube (**3**) parallel to the ground. (See Fig. 1)

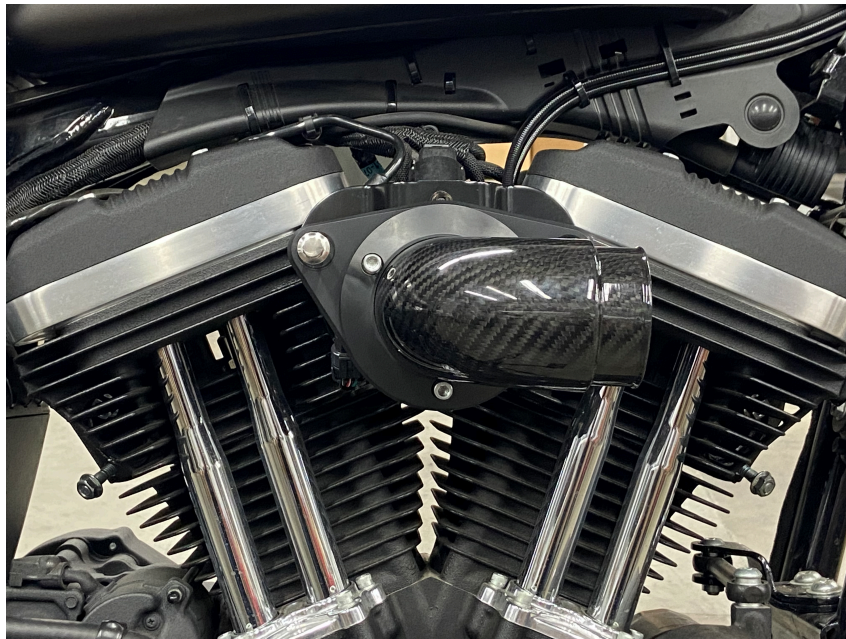


Figure 1

8. Install the hose clamp **(4)** through the clips of the air filter base **(5)**.  
*Clamp and base opening should be to the inside with screw head facing down for access.*  
*NOTE: Gently use flat head screw driver to slightly pry open the clips on the air filter base **(5)** to allow the hose clamp to go through, as needed.*
9. Install the air filter base **(5)** and hose clamp **(4)** onto the base of the air filter.
10. Install the air filter **(6)** on to the 90 degree tube. Clock air filter **(6)** and air filter base **(5)** as shown (See Fig. 2)
11. Tighten hose clamp until air filter is secure from sliding off 90 degree tube. Do not over tighten.

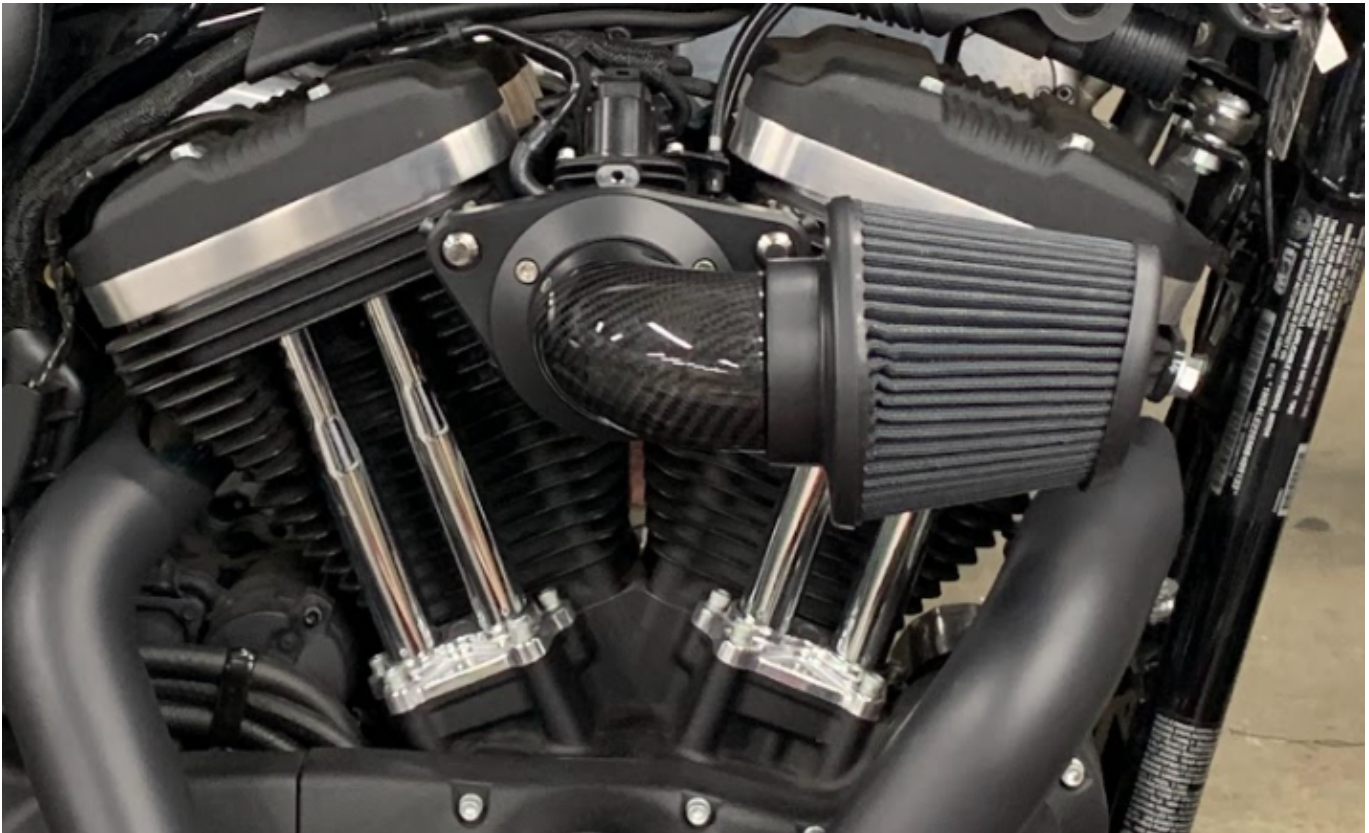


Figure 2

Emissions Notice:

In California, in order to meet Air Resources Board emissions requirements, certain aftermarket part applications have been identified as replacements, and others have received ARB Executive Orders. All other emissions related aftermarket parts are for competition use only. A list of replacement parts and EO parts, and corresponding fitment is provided at [vanceandhines.com/California](http://vanceandhines.com/California).

Warranty:

All Vance & Hines products are warranted against defects in material and workmanship for a period of 90 days. This warranty does not cover discoloration or rust. This warranty shall be limited to the repair or replacement of the product, which may be proven defective under normal use. Vance & Hines will not warranty any system that has been abused, misused, improperly installed or modified.

Dealers or distributors are not authorized to make dispositions binding upon Vance & Hines. Vance & Hines will not be responsible for any labor charges incurred in removing or replacing any system under warranty. A return authorization number and a copy of the original purchase invoice must accompany all returns. Parts returned without a return authorization may be refused.

13861 ROSECRANS AVENUE / SANTA FE SPRINGS, CA 90670  
SALES: (562) 921-5388  
TECHNICAL: (562) 926-5291  
FAX: (562) 802-0110

**vanceandhines**  
**.com**