

**HARLEY-DAVIDSON® TOURING MODEL
MONSTER OVAL SLIP-ON'S
INSTALLATION INSTRUCTIONS
PART# 16753 & 16755**



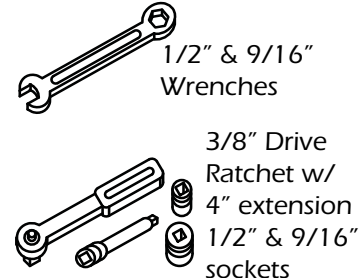
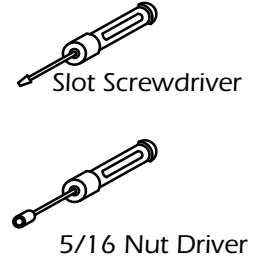
MORE POWER : LESS NOISE



Congratulations, you have purchased the finest exhaust system for your motorcycle on the market. Your Vance & Hines exhaust system is designed and crafted for maximum performance, a perfect fit, a great sound and unbeatable style. Please follow the installation instructions below and if you have any questions, please call our technical support line at (562) 926-5291.

Attention installer (if other than owner), please forward this instruction sheet to the owner of this product. These instructions contain valuable information to the end user.

**TOOLS
REQUIRED**



READ ALL INSTRUCTIONS BEFORE BEGINNING INSTALLATION

**STOCK EXHAUST
SYSTEM REMOVAL**

1. Remove both saddlebags and set them aside.
2. Loosen the bolt from the pinch clamp on the front end of each muffler.
3. Working with one muffler at a time, support the muffler (assistance may be required) while removing the 5/16" bolts from the saddlebag support and slide muffler off of the head pipe.
4. Repeat the process for the opposite muffler. NOTE: It may be necessary to use a penetrating lubricant to loosen the muffler from the head pipe.
5. Leaving the grommets in place, remove the stock mounting brackets from the rubber grommets located on the saddlebag supports (Figure 1). NOTE: Inspect the grommets to verify that they are in good condition, if the grommets are damaged they will need to be replaced.



FIGURE 2



FIGURE 3

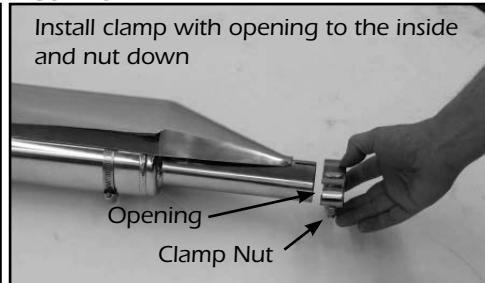


FIGURE 4

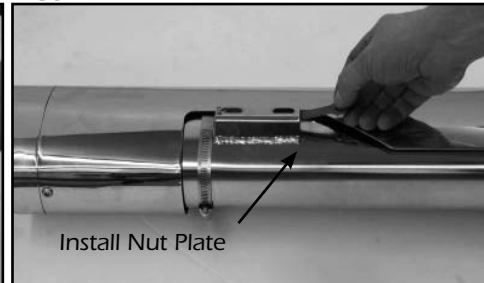


FIGURE 5



VANCE & HINES EXHAUST SYSTEM INSTALLATION

1. Install the muffler brackets (supplied) into the grommets on the saddlebag supports so that the tongue faces upwards (Figures 2). NOTE: Use of penetrating lubricant may help to slide the bracket into the grommet.
2. Install the band clamps (supplied) over the front of each muffler so that the bolt is to the inside and the nut is facing down (Figure 3). NOTE: New band clamps are supplied, do not use the old clamps.
3. Slide nut plates inside the brackets welded to backside of muffler bodies (Figure 4). While holding nut plates, slide muffler over stock exhaust head pipe and carefully attach muffler bodies to the mounting bracket using the supplied 5/16"-18 x 5/8" flange head bolts (leave them loose at this time) NOTE: Muffler heat shield is placed under head pipe heat shield take care not to allow the head pipe heat shield to rub the front of the muffler heat shield.
4. Repeat installation procedure for opposite muffler.
5. Align mufflers and tighten hardware, beginning with the 5/16"-18 x 5/8" flange bolts on the mounting brackets followed by the band clamp. NOTE: You may want to use an assistant at this time to visually check alignment while you tighten the hardware. Pay special attention to making sure the muffler does not droop, when viewed from the back of the motorcycle. Torque spec. is 40-45 Ft./Lbs.
6. Tighten all heat shield clamps.
7. Replace the saddlebags.
8. After installation and before starting motorcycle, completely clean pipes and mufflers with cleaning solvent and a clean, soft cloth that will not leave a residue. NOTE: Any residue, oil, or fingerprints will stain the chrome when the metal heats up.
9. Be sure to tighten all hardware before starting your motorcycle.
10. Design Note: For a different look the End Caps may be removed and re-installed with the slash facing up (Figure 5).
11. IMPORTANT: AFTER TEST RIDE LET PIPES COOL DOWN AND RE-TORQUE MUFFLER BAND CLAMP.

EXHAUST CARE - HELPFUL HINTS TO AVOID DISCOLORATION OF EXHAUST SYSTEM

1. When installing a new set of chrome pipes, make sure your hands are clean and free of oil. After installation, thoroughly clean pipes with a soft cloth and cleaning solvent that will leave no residue (chrome wax / polish, glass cleaner, alcohol, ammonia, etc...) before starting the motorcycle.
2. Avoid long periods of idling as this can cause discoloration.
3. Intake leaks can cause the engine to run lean and overheat, this could lead to discoloration.
4. Make sure there are no exhaust leaks at the junction of the exhaust pipes and cylinder head. We recommend replacing gaskets if they are worn.

VANCE & HINES OPTIONAL ACCESSORIES

FUELPAK



FUEL MANAGEMENT:

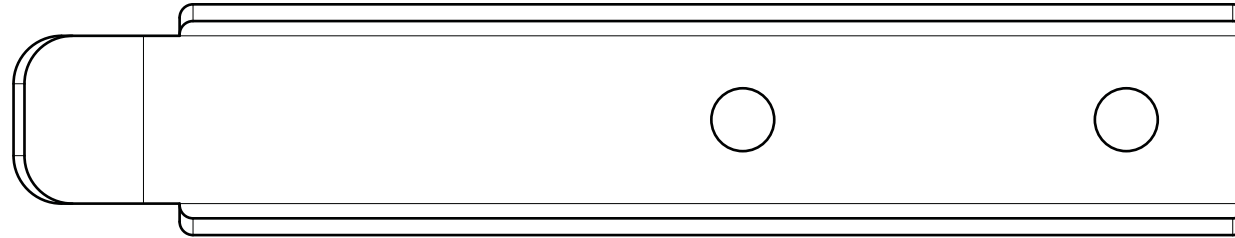
Take the guess work out of fuel injection with Fuelpak Fuel Management. Contact your local dealer or call (562) 921-0071 to order. Visit fuelpakfi.com for more information. Fuelpak is intended for racing or off-highway use only, and is not legal for sale or use in California on pollution-controlled vehicles.

PLEASE NOTE: Every effort is made for Vance & Hines Exhaust Systems to provide improved cornering clearance. However, due to design and space limitations on some motorcycle models, ground and cornering clearance may not be improved and in some cases may be reduced. Be sure to follow proper installation instructions.

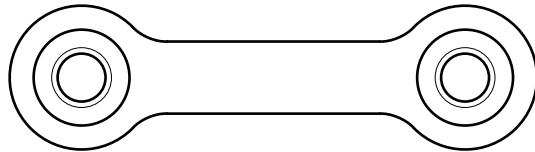
PACKING LIST

MORE POWER : LESS NOISE

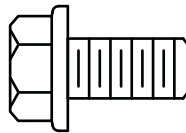
ALL PARTS SHOWN ARE ACTUAL SIZE



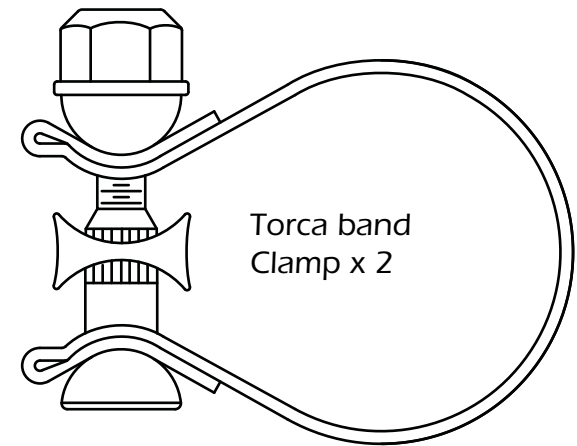
Mounting Bracket x 2



Nut Plate x 2



5/16-18 Flange Head Bolt x 4



Torca band
Clamp x 2

PARTS NOT SHOWN:

D720RC	RH Muffler Casing	x1
D721RC	LH Muffler Casing	x1
D725HC	RH Muffler Heatshield	x1
D726HC	LH Muffler Heatshield	x1
A341BEC	Chrome caps (16755)	x2
A342BEC	Black caps (16753)	x2

WARRANTY

Vance & Hines exhaust systems are warranted against defects in material and workmanship for a period of 90 days from the date of purchase from an authorized dealer. This warranty does not cover discoloration of chrome finishes. This warranty is limited to the repair or replacement of a product proven to be defective from normal use. Vance & Hines exhaust systems are designed to fit and operate on OEM motor and chassis. This warranty does not cover any product subject to abuse, misuse, improper installation or modification.

FUEL MANAGEMENT

GET THE MOST OUT OF YOUR RIDING EXPERIENCE...

AN AFTERMARKET EXHAUST SYSTEM IS ONLY YOUR FIRST STEP, NOW YOU NEED FUEL MANAGEMENT.

NOW YOU NEED FUELPAK.

Your fuel injected Harley-Davidson® is equipped with an ECU (electronic control unit) that's programmed to deliver fuel to the motor based on an air/fuel ratio for a stock air filter and stock exhaust system. When you install a performance exhaust system, your airflow changes, so you need a fuel management system that adjusts your air/fuel ratio to match the changes. That fuel management system is Fuelpak. Fuelpak adds and takes away fuel, allowing for a more precise range of refinement in your air/fuel ratio. Get the perfect fuel management combination with your Vance & Hines exhaust system, get Fuelpak. For more information visit the tuning center at fuelpakfi.com

NOTICE: Fuelpak is intended for racing or off-highway use only, and is not legal for sale or use in California on pollution-controlled vehicles.



MORE POWER : LESS NOISE

13861 ROSECRANS AVENUE / SANTA FE SPRINGS, CA 90670
SALES: (562) 921-5388 / TECHNICAL: (562) 926-5291 / FAX: (562) 802-0110
VANCEANDHINES.COM