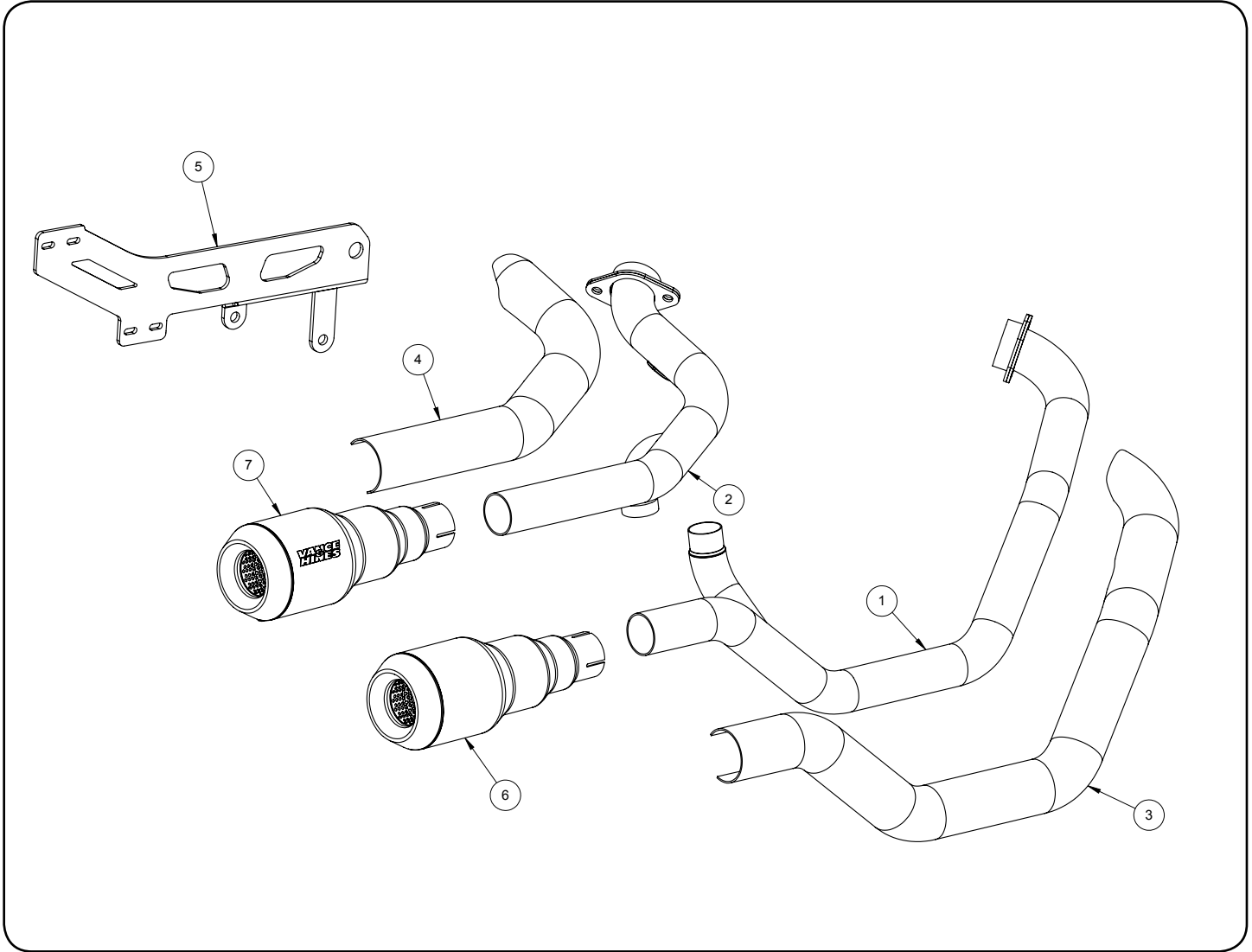


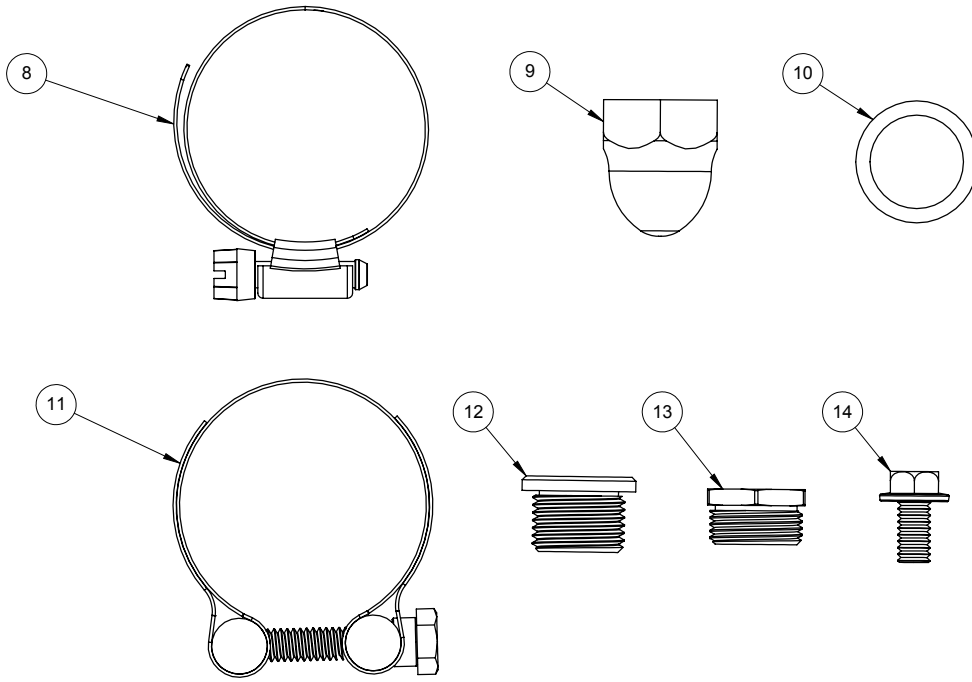
Congratulations, you have purchased the finest exhaust system available for your motorcycle. Your Vance & Hines exhaust is designed and crafted for performance, quality, and style. Please follow the instructions below, check exhaust system for missing or damaged parts and if you need any assistance please contact our technical support line (562) 921-7461.



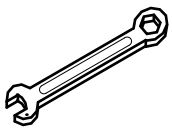
## PARTS LIST

NO.	Description	Qty..			
1	Front Head Pipe	1	9	Indian Swingarm Stud Cover	1
2	Rear Head Pipe	1	10	18mm x 24mm Washer	2
3	Front Heat Shield	1	11	Band Clamp	2
4	Rear Heat Shield	1	12	18mm x 1.5mm x 10mm Plug -Zinc	2
5	Mount Bracket	1	13	18-12mm O2 Adaptor	2
6	Grenade Muffler	1	14	1/4-20 x 1/2 Flange Bolt	4
7	Grenade Muffler	1			
8	Hose Clamp	7			

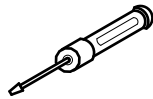
## HARDWARE



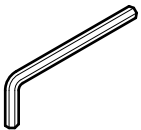
## TOOLS REQUIRED



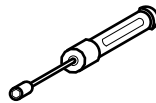
**Combination Wrench:**  
13mm, 7/8"



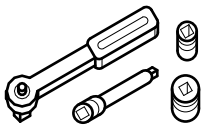
**Flat Head Screwdriver**



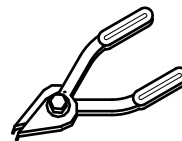
**Allen Wrenches:** 3/16",  
5/16", 10mm



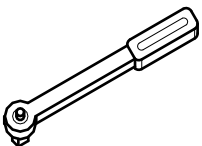
**5/16 Nut Driver**



**3/8" Drive Ratchet w/ 4" ex-  
tension, 15mm, 13mm, 10mm  
socket, 7/16" Deep Socket**



**Snap Ring Pliers**



**Torque Wrench In-Lbs.**

## STOCK EXHAUST SYSTEM REMOVAL

1. Find and unplug the O2 sensor wires from the wiring harness. Feed the end of the wires through the frame so they are free from the motorcycle. Pay attention to the wire routing for re-installation.
2. Remove the bolts which hold the muffler bodies to the mount bracket. Then remove the muffler bodies.
3. Loosen the clamp bolts which mounts the rear header to the front header.  
Remove the two head pipe mounting nuts from each flange, located at the cylinder head.
4. Loosen the head pipe flange nuts on both the front and rear head pipes at the exhaust port.
5. Remove the pipe clamp that holds both the front and rear header.
6. Remove the loosened rear header stud nuts.
7. Remove the rear header carefully. Try not to scratch the mount bracket. The connection point between front and rear header pipes may be tight. Spray loosening agent and lightly hit with a mallet if necessary.
8. Remove the loosened front header stud nuts.
9. Carefully remove the O2 sensors from the stock head pipes and save them for reuse with the new system.
10. Remove the front header by dropping it down and rotating the end of the header up to allow adequate space from the bike frame.

## VANCE & HINES EXHAUST INSTALLATION

**FITMENT NOTES:** Vance & Hines Hi-Output Grenades does not fit with OEM accessory passenger pegs.

1. Using the stock hardware install and tighten the muffler bracket. Use the same holes as the stock mounting bracket. Install the stud cover nut over the top stud in the bracket. See **Figure 1**.
2. Remove the head pipe assembly and heatshields from their protective packaging. Place each heat shield on a non-abrasive surface such as blanket or carpet. On chrome, use a felt tip pen and mark the outside edge of each heat shield to show the location of the mounting clips that the hose clamps will loop through. **Figure 2**. On black systems mark the outside with a pencil or a piece of tape. Caution: Place tape around the edges of the heat shield so they will not be scratched when installing.
3. Lay the head pipes into the heat shields and loosely install the #20 hose clamps into the mounting clips.
4. Apply a small amount of anti-seize compound to the threads of the oxygen sensors and install them into the new head pipes.
5. With the stock nuts install and hand tighten the front head pipe into the exhaust port.
6. Slide the crossover heat shield onto the rear head pipe. NOTE: The crossover heat shield cannot be installed after the front and rear head pipes are installed on the bike.
7. Connect the rear head pipe crossover into the front head pipe crossover. See Figure 1.
8. Install and hand tighten the rear head pipe into the exhaust port.
9. Install the Grenade muffler onto the front head pipe with the supplied band clamp. The head of the clamp should be at the bottom to access it from below.
10. Screw the Grenade muffler onto the mounting bracket with two 1/4-20 flange head bolts.
11. Install the other Grenade muffler (Vance and Hines Logo) onto the rear head pipe with the supplied band clamp. The head of the band clamp should be at the top to access it from above.
12. Then screw the Grenade muffler onto the mounting bracket with the two 1/4-20 flange head bolts.
13. Align the exhaust head pipes and mufflers so that they sit level to the ground. See **Figure 3**.
14. Tighten the exhaust flanges. Torque to 100-120 In-Lbs.
15. Tighten the mufflers to the bracket. Torque to 41-57 In-Lbs
16. Tighten the heat shields.
17. Route the O2 sensors away from hot areas of the motorcycle. Plug the O2 sensor wires back into the wiring harness.
19. Be sure to tighten all hardware before starting your motorcycle.

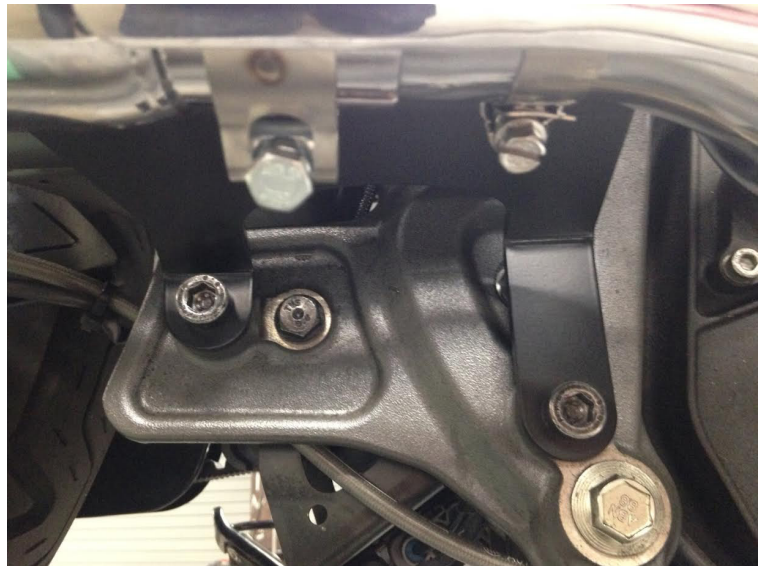
### EXHAUST CARE (CHROME)

1. When installing a new set of chrome pipes, make sure your hands are clean and free of oil. After installation, thoroughly clean pipes with a soft cloth and cleaning solvent that will leave no residue (chrome wax / polish, glass cleaner, alcohol, ammonia, etc...) before starting the motorcycle.
2. Avoid long periods of idling as this can cause discoloration.
3. Intake leaks can cause the engine to run lean and overheat, this could lead to discoloration.
4. Make sure there are no exhaust leaks at the junction of the exhaust pipes and cylinder head. We recommend replacing gaskets if they are worn.

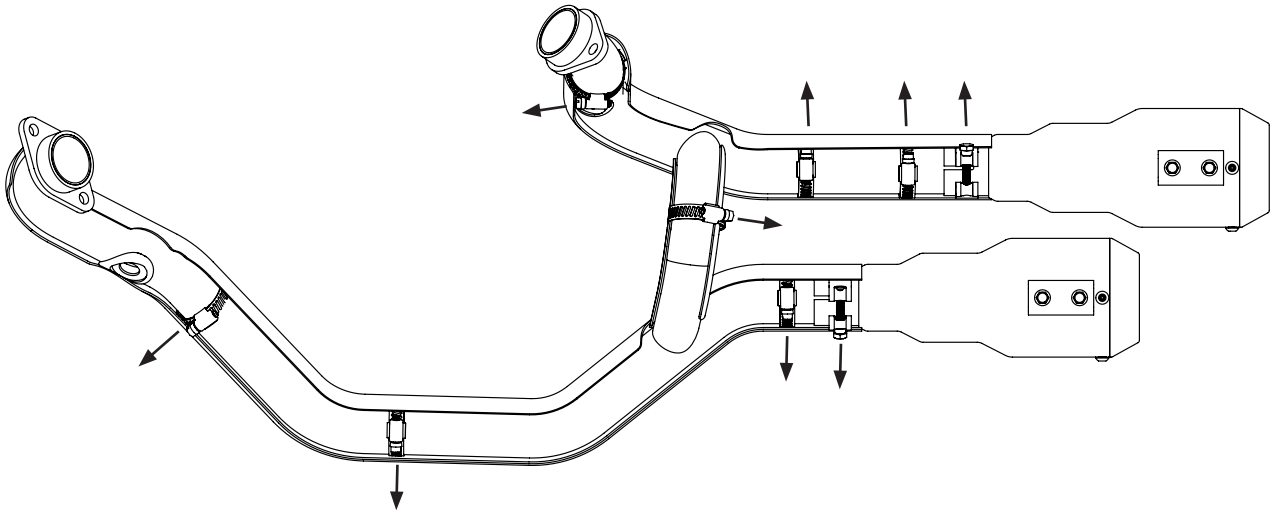
### EXHAUST CARE (BLACK)

1. When installing a new set of black pipes, make sure your hands are clean and free of oil. After installation, thoroughly clean pipes with warm soapy water and a soft cloth. Dry with clean towel to remove any residue before starting the motorcycle. Do NOT use anything abrasive to clean pipes.
2. Avoid long periods of idling as this can cause discoloration.
3. Intake leaks can cause the engine to run lean and overheat, this could lead to discoloration.
4. Make sure there are no exhaust leaks at the junction of the exhaust pipes and cylinder head. We recommend replacing gaskets if they are worn.

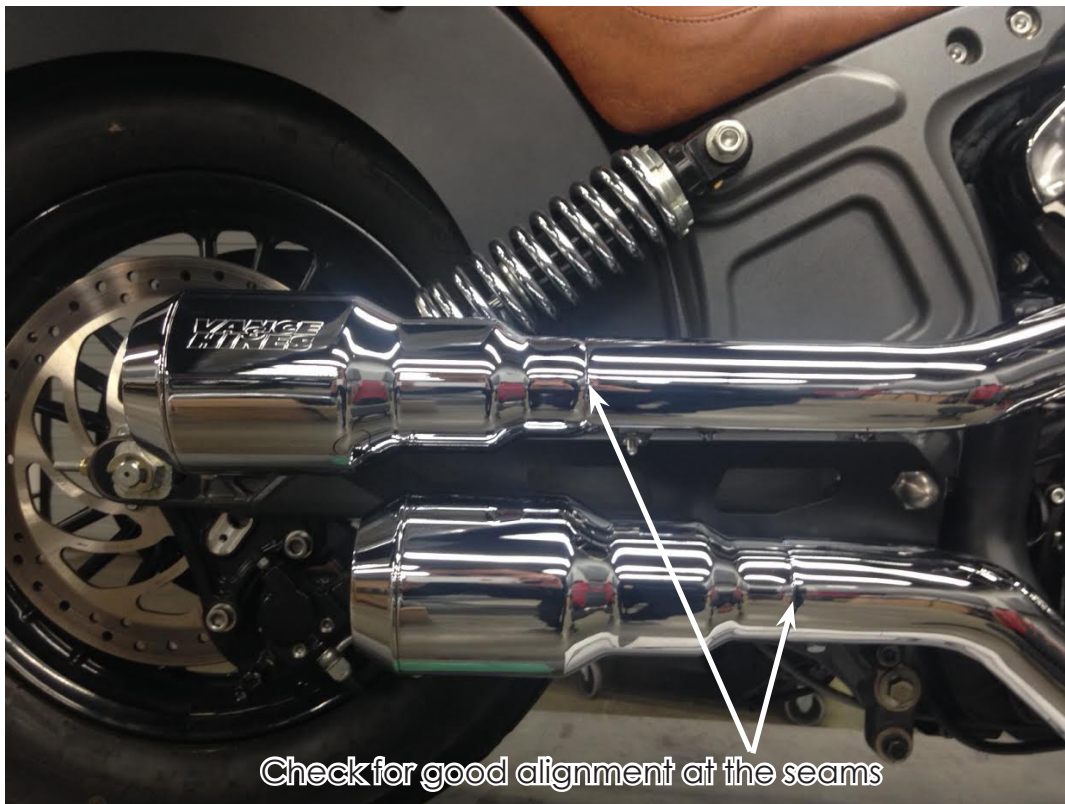
FIGURE 1



**FIGURE 2**



**FIGURE 3**



Check for good alignment at the seams

Emissions Notice:

In California, in order to meet Air Resources Board emissions requirements, certain aftermarket part applications have been identified as replacements, and others have received ARB Executive Orders. All other emissions related aftermarket parts are for competition use only. A list of replacement parts and EO parts, and corresponding fitment is provided at [vanceandhines.com/California](http://vanceandhines.com/California).

Warranty:

All Vance & Hines products are warranted against defects in material and workmanship for a period of 90 days. This warranty does not cover discoloration or rust. This warranty shall be limited to the repair or replacement of the product, which may be proven defective under normal use. Vance & Hines will not warranty any system that has been abused, misused, improperly installed or modified.

Dealers or distributors are not authorized to make dispositions binding upon Vance & Hines. Vance & Hines will not be responsible for any labor charges incurred in removing or replacing any system under warranty. A return authorization number and a copy of the original purchase invoice must accompany all returns. Parts returned without a return authorization may be refused.

13861 ROSECRANS AVENUE / SANTA FE SPRINGS, CA 90670  
SALES: (562) 921-5388  
TECHNICAL: (562) 926-5291  
FAX: (562) 802-0110

**vanceandhines**  
**.com**