



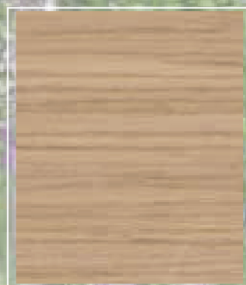
SKAY&WOOD  
2022

www.nilospadesign.com  
info@nilo-beauty.com

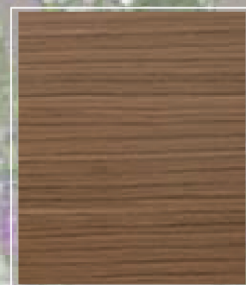
WOOD



Rovere Sbiancato  
White Oak  
Rouvre Blanc



Rovere Chiaro  
Light Oak  
Rouvre Claire



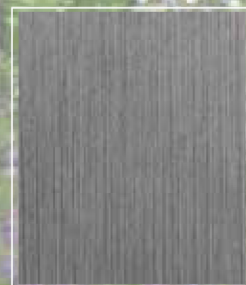
Noce  
Walnut  
Noyer



Not Available



Wengè



Legno cleaf  
Grigio satinato  
Satin gray



Rovere  
Oak  
Rouvre

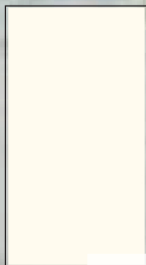


Bianco  
White  
Blanc

WOOD FOR OMNIA

WOOD/LAMINATE FOR ABU DHABI AND MUMBAI

Bianco Opaco  
Matt White



STANDARD

Bianco Lucido  
Brillant White



OPTIONAL

Avorio Brillante  
Matt Ivory



Grigio Chiaro  
Light Grey



Cemento Bianco  
White Cement



Nero Opaco  
Matt Black



Nero Lucido  
Brillant Black



Grigio Satinato  
Saten Grey



Ebano Sequoia  
Ebony Sequoia



Palissandro  
Rosewood



Tranchè



Rovere  
Oak



Engandina  
Engadine



Calacatta Bianco  
White Talc



Calacatta Nero  
Black Talc



SCHEDA TECNICA  
TECHNICAL DATA SHEET

Articolo / Article:

Peso / Weight	UNI EN ISO 2286 - 12001	Grim²	480	+/- 10
Spessore / Thickness	UNI 4818-2	mm	1,00	+/- 0,10
Altezza Rotoli / Width		Cm	138	+/-2
Resistenza a Trazione / Tensile Strength	UNI EN ISO 1421:2000	N/5 cm	Ordito / Along ≥500 Trama / Across ≥350	
Resistenza alla Lacerazione / Tear Strength	UNI EN ISO 4674 - 12005	N	Ordito / Along ≥30 Trama / Across ≥25	
Resistenza alla Cucitura / Seam Resistance	UNI 10606	N/cm	Ordito / Along 17,7 Trama / Across 40,6	
Allungamento Rottura / Ultimate Elongation	UNI EN ISO 1421:2000	%	Ordito / Along ≥15 Trama / Across ≥20	
Delaminazione Supporto / Peel Adhesion	UNI EN ISO 2411:2001	N/5cm	Ordito / Along ≥30 Trama / Across ≥25	
Abrasiono / Wear (Martindale)	UNI EN ISO 20344:2011	Cicli / Cycles	51.200 Secco/Dry 25.600 Umido/Wet	
Flessione / Flexing Endurance	UNI 4818-13	Cicli / Cycles	≥100.000	
Idrolisi / Hydrolysis Resistance Jungle test	ISO 1419C:1995(E)	7 giorni 70°C 95% UM	Inalterato dopo flessioni 50.000	
Solidità colore rivestimento allo Stregamento Coating color fastness to Rubbing	UNI EN ISO 105 - X 12	Scala dei grigi Grey scale	Secco / Dry ≥4 Bagnato / Wet ≥4	
Resistenza colore / Color fastness Luce artificiale / Artificial Light	UNI EN ISO 105 - B02:01	Scala dei Blu / Blue scale	5 colori bianco e medi white & medium colours 7 colori scuro/dark colours	

Inflamabilità / Flammability	
Standard:	- AFNOR NF P 92-503 (M2)
- UNI 9175 / FA1 (1IM);	
- IMO FTP (FTP Code Annex 1 Part 8 (1996) Imo Res A. 652 (16) (1989));	
A richiesta / on demand:	- BS 7176 / EN 1021 PARTS 1 & 2 1994
- BS5852:2006; CLAUSE 11 (CRIB 5)	
- FMVSS 302 U.S.A. Motor Vehicle Safety	- CALIFORNIA 117, SECTION E

Il prodotto non sopporta trattamento con cloro / Do not treat with chlorine

Il prodotto può essere stirato al rovescio, ad una temperatura max di 110°C, meglio frapponendo un panno umido.  
The product can be ironed on the back at a max temperature of 110°C, better interposing a humid cloth.

TRA DIFFERENTI LOTTI DI PRODUZIONE, POTRANNO VERIFICARSI LIEVI OSCILLAZIONI DI TONALITÀ DI COLORE E MANO, CHE COMUNQUE RIENTRANO NELLE CONSUETUDINI DI TOLLERANZA. SI CONSIGLIA PERTANTO DI NON MESCOLARE, IN FASE DI LAVORAZIONE, PEZZE APPARTENENTI A LOTTI DIVERSI.

AMONG THE DIFFERENT PRODUCTION LOTS, IT CAN HAPPEN THAT THERE ARE SLIGHT VARIATIONS OF COLOR TONALITY AND TOUCH, WHICH ARE IN ANY CASE WITHIN THE TOLERANCE STANDARDS. WE THEREFORE RECOMMEND NOT TO MIX, DURING PRODUCTION, ROLLS BELONGING TO DIFFERENT LOTS.

SKAY STANDARD



804 white



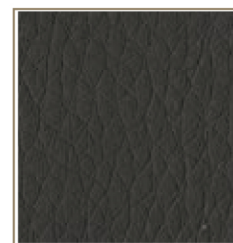
810 beige



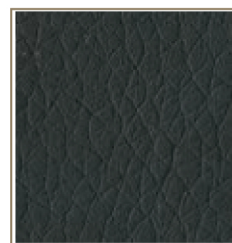
825 light beige



826 bright beige



805 espresso



806 black



818 pearl



819 light grey



574 fango vintage



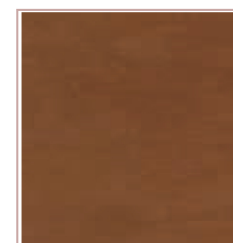
824 dark green



918 visone



827 dark brown



584 new cuoiotto



828 rosa

OPTIONAL SKAY



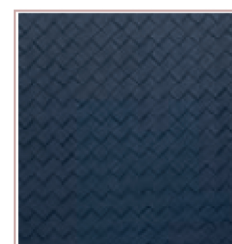
795 salvia



795 G 56 salvia W



561 KE ocean blu



561 KE G 56 ocean blu W



535 bordò



535 G 56 bordò W



575 camell



575 G 56 camell W



828 G 56 rosa W

altri colori su richiesta - more colors on request - autres couleurs sur demande - weitere polsterfarben auf anfrage