

MALETTI

for the Planet

www.maletti.it



GIOVANNONIDESIGN

Index

OUR VALUES	6
OUR ECOLOGICAL PRODUCTS	20
OUR SANITATION DEVICES	56
OUR SUSTAINABLE MATERIALS	58
OUR VISION OF THE FAIR	64



MISSION & VISION

The history of Maletti is characterized by a constant ability to anticipate the times, managing to launch visionary projects thanks also to the support of the most important designers in the world and a team of professionals with specific skills.

Starting from the 1980s, Maletti began the race towards a 100% sustainable future. A 360 ° update plan for all areas, from the production phase to the choice of materials to the revisitation of the most famous lines in an eco-friendly key. A path of growth and planning to restore sociality to the salons, guarantee more functional and eco-sustainable environments and redevelop existing spaces, up to obtaining the “Carbon Zero” certification for the headquarters (according to UNI ISO 14064) which certifies their neutrality absolute with respect to CO2 emissions.

A revolution guided by one principle: making everyday objects more durable, easier to repair, reuse or recycle.

Maletti

Our Values

Maletti Group has been working for years to meet the needs of those who have decided to adopt a lifestyle and greener work. A change of course that has directed the brand towards the adoption of sustainable systems, eco-friendly materials and 0 km suppliers. The result is a drastic reduction in the environmental impact of all the hairdressing lines without sacrificing the great quality that gives always distinguishes Maletti.

social and environmental



ZERO WASTE



REUSE
RESPONSIBLE



ORIENTATION TOWARDS
NATURAL MATERIALS

1/ We care of our planet

WATER

Our systems are designed to ensure significant water savings, which allows a reduction in water consumption by 30% 70% for each wash..

POWER

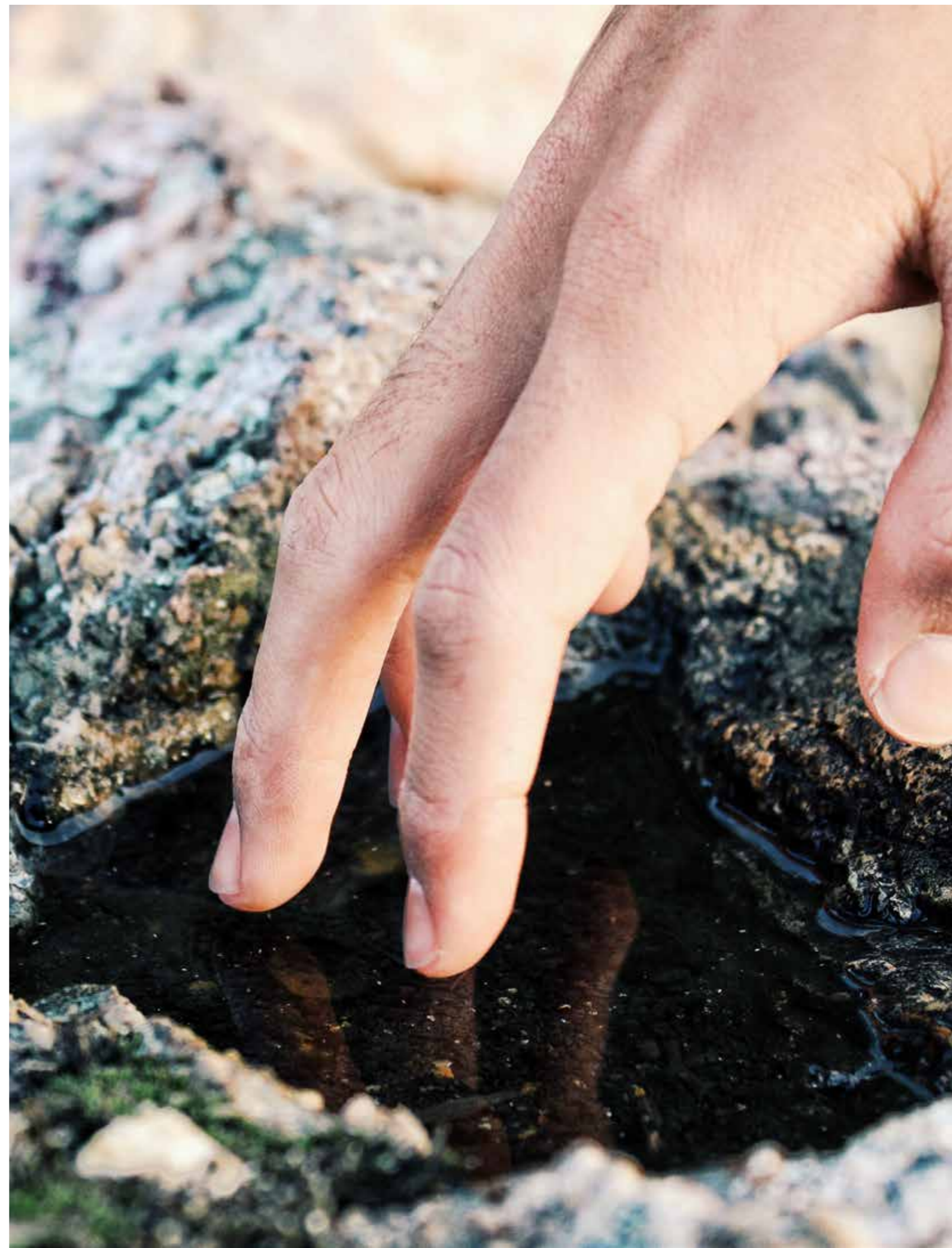
Thanks to our LED backlighting systems for the mirrors and the innovative low absorption control units for the wash units we guarantee considerable energy savings e less overheating of the environment.

MATERIALS

Our patented coatings are innovative, ecological, safe for health and designed to last over time. Skai made with 80% sustainable materials and natural substances such as apple or orange peel. Coatings coming from recycled PET; technical wood for 0 km panels.

WASTE

We have prepared our back-washing furniture for the separate collection of professional products so as to allow operators not to have to leave the workstation. Furthermore, we only use packaging made of recycled materials or those deriving from vegetable crops, optimized in terms of weight and volume. to overcome the problem of waste disposal.



2/ We guarantee safety within the work environment

100% SAFE

Our series of devices designed to take advantage of the germicidal and virucidal action of UV-C rays, emitted by special LED lamps, to sanitize objects and the air in closed environments in a continuous cycle even in the presence of people.

UP & DOWN WASH

A wash that we have equipped with a basin height adjustment system that facilitates the operator during treatment and reduces the incidence of diseases of the musculoskeletal system.



3/ We guarantee the right ergonomics for the staff and for customers

UP & DOWN WASH

The special Maletti washing machine equipped with a seat facilitating system and removable armrests designed to favor people with reduced mobility.

STAR CLASS WASH

We have equipped the wash with a horizontal seat lifting system, air massage and neck protector with support.

PMR CASES

Designed to facilitate movement and use by people suffering from disabilities.

STEAM SYSTEM

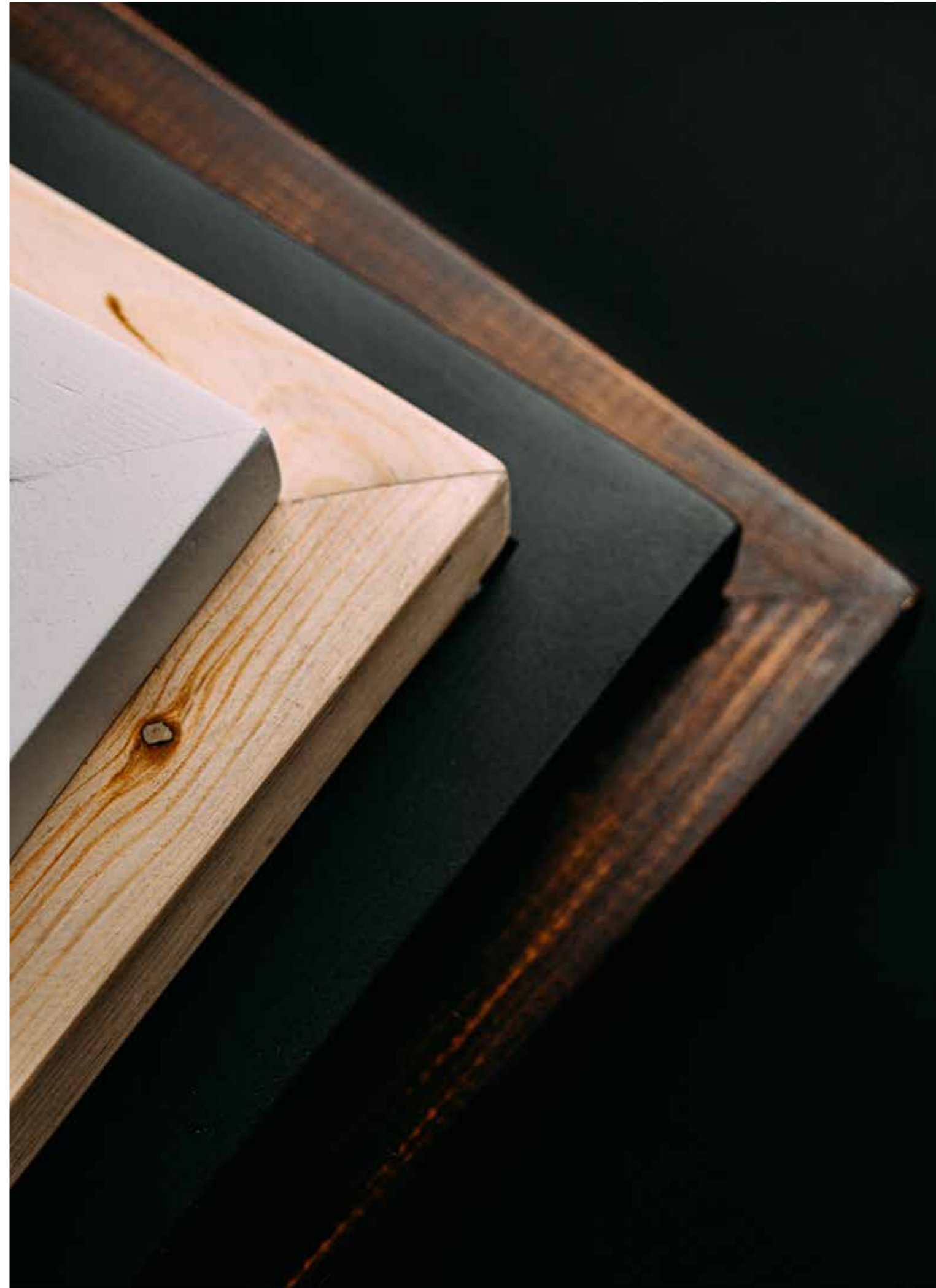
The exclusive Maletti patent that combines the unique benefits of steam to an all-encompassing relaxation experience for mind and body.



4/ We choose the right partners

About 90% of our suppliers are 0 km.

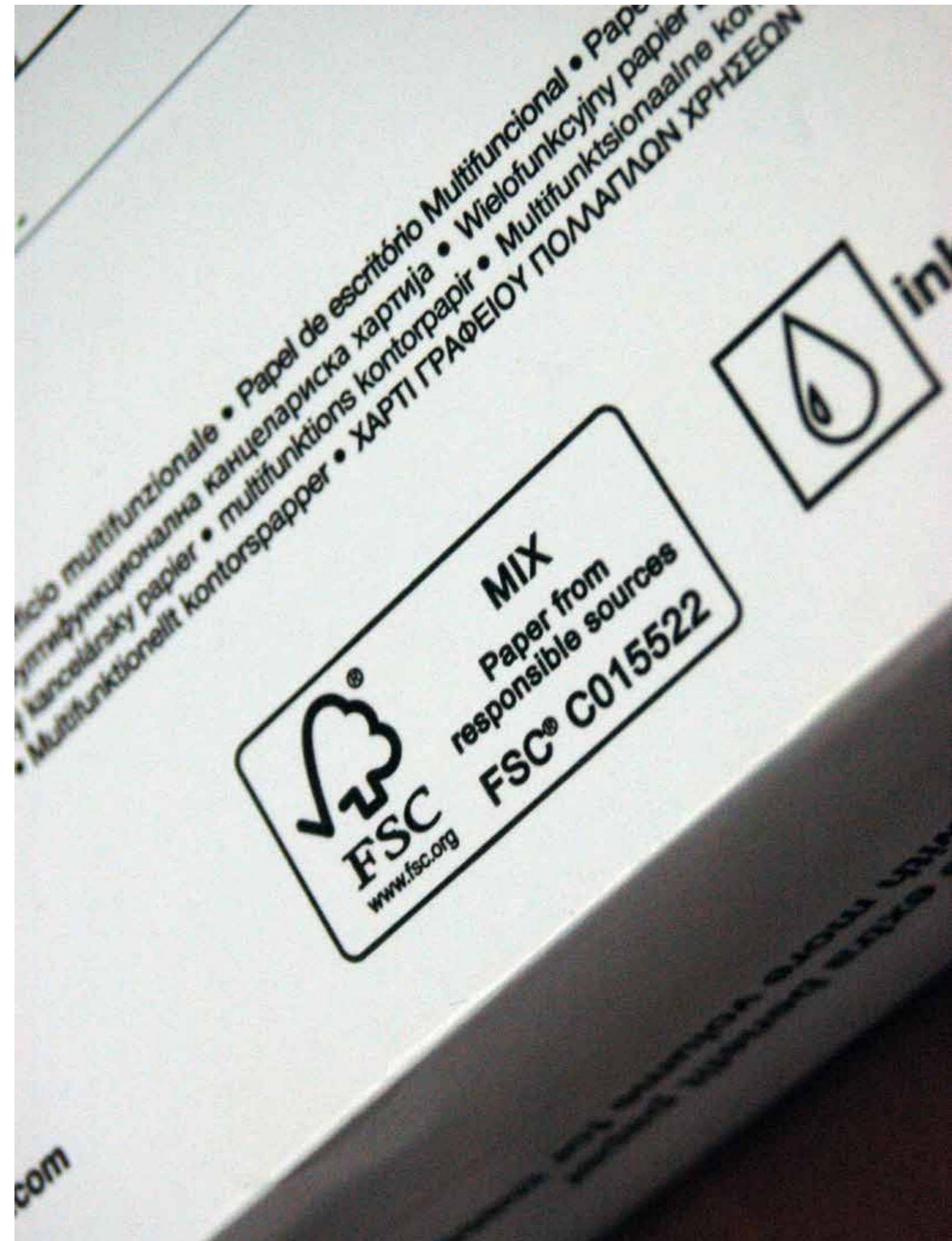
Maletti has been collaborating for years with companies that share the same values of eco-sustainability.



5/ We choose to communicate by promoting the same values that unite us to our customers

Maletti prefers online communication and uses paper only with FSC certification to print the little paper material which produces.

We promote issues related to sustainability on its social channels, showing the importance and centrality of its ethical values.



1980

Already in the 1980s, Maletti initiated the first reflections on sustainability: organizing the company campaign for paper recycling, controlling the temperature inside the rooms and promoting separate waste collection.

2010

The Maletti eco-sustainable project takes shape with the birth of the first three furniture lines united by the use of sustainable materials and great design contents: Green First® and Alu Green® created by Giovannoni Design, Eco Fun signed by Christophe Pillet.

2011

The intuition of a low environmental impact living room was born: a space that perfectly meets the contemporary needs of the most demanding customers, harmoniously combining luxury and elegance and preserving an intimate, comfortable and relaxing atmosphere.

2018

Presentation of Eden Plus, the new frontier of Maletti wellness. The innovative shampoo chair that exploits the beneficial effect of hot steam to enhance the effectiveness of the products during treatments and at the same time reduce water consumption during washing.

Today

Maletti, thanks to the partnership with leading companies in the production of eco-sustainable materials, creates salons, beauty farms and spas all over the world with low environmental impact.

Commitment is
our eco-sustainable
journey

Our range

Maletti furnishings combine exclusivity and comfort and functionality in an ecological vision of well-being that keeps needs at the center of customers and operators.

of
eco-sustainable
products



Wood

The washing structure is made of FSC-certified multilayer wood from zero km forestry. The panels recall the tones of elm but with veins similar to those of oak and a color with a brighter essence.

Padding and skai

The Maletti lines are made with patented biosynthetic materials and ecological fabrics that guarantee quality and comfort while respecting the environment.

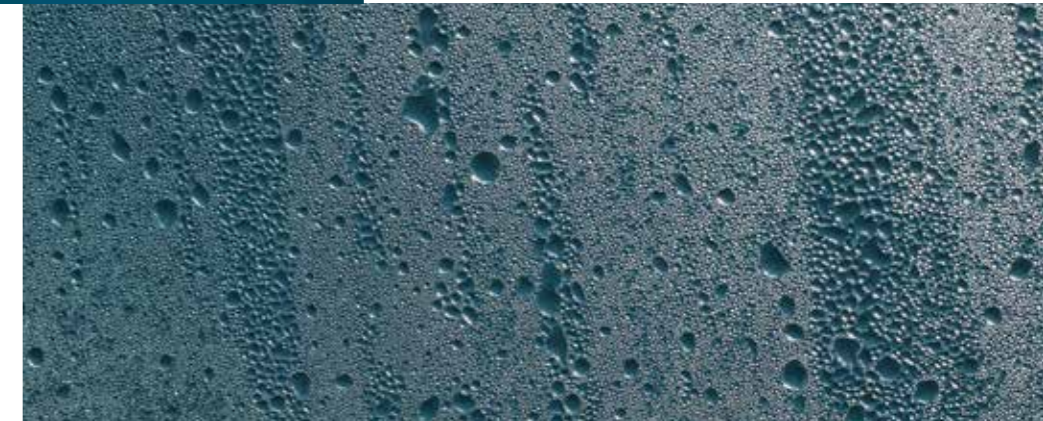


Water saving

Water saving systems of Maletti Group allow a reduction of water consumption up to at 6/7 liters / minute.

Steam

All Maletti wash units can be combined with Vapomist (1 and 2) and Cap to bring the benefits of steam to your salon and offer your customers a premium wellness experience.



Organic oil

Maletti uses biodegradable oils (over 80%) on the hydraulic pumps installed on the chairs of the eco collection.

Natural-based oil designed to reduce lubricant consumption, disposal costs and environmental impact.

CONFIGURATIONS
OF COLORS AND
OF MATERIALS
with oak wood



CONFIGURATIONS
OF COLORS AND
OF MATERIALS
with Elm wood





6/

The Maletti Codetta with incomparable comfort, high performance with a prestigious design and ecological materials.

- FSC certified plywood
- Water-saving hand shower: - 6/7 liters per minute (50% less with each wash)
- structure in recyclable aluminum
- eco-sustainable coating



BASIN white or black
WOOD oak or elm
UPHOLSTERY by choice
of skay or eco-sustainable
fabric



COLOR AND MATERIAL
Oak (with contrast)

WASHUNIT GREEN STAR CLASS

AIR P45772
COMFORT P457752

Green Star Class perfectly embodies the values of sustainable beauty embraced by Maletti.

The wash unit is made of FSC-certified plywood, equipped with a water-saving shower head that saves 6/7 liters per minute (50% less at each wash) and a recyclable aluminum undertail.

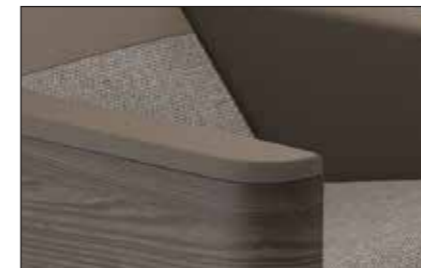
It is available in two versions:
AIR with air massage and electric leg rest
COMFORT with electric legrest
CODETTA white or black
WOOD oak or elm
COVERING of your choice

DIMENSIONS
↑ 97 cm ↗ 126-183 cm → 73 cm

- Water saving system.
- Eco-friendly skay upholstery
- Fabric upholstery from apple scraps.
- Eco-friendly padding
- Recyclable aluminum.

other colors available

Elm tree



other colors available

Oak (no contrast)





BASIN white or black
WOOD oak or elm
UPHOLSTERY by choice
of skay or eco-sustainable
fabric

COLOR
DARK VERSION



WASHUNIT UP & DOWN

AIR MASSAGE 45531
COMFORT 45541

Up&Down combines the safeguarding of staff health and customers with an eco-sustainable design.

The wash unit is equipped with a basin height adjustment system to reduce the incidence of diseases of the musculoskeletal system and a seated support system with removable armrests to facilitate access for people with reduced mobility. Available in version with air massage and electric legrest, or alone with electric legrest.



DIMENSIONS
↑ 95-119 cm ↗ 129-160 cm → 67 cm

IT IS AVAILABLE IN TWO VERSIONS: → AIR WITH AIR MASSAGE AND ELECTRIC LEGREST
→ COMFORT WITH ELECTRIC LEGREST
→ WHITE OR BLACK BASIN
→ OAK OR ELM WOOD
→ COVERING OF YOUR CHOICE

other colors available
Clear



EXAMPLES OF APPLICATION



VAPOMIST 1

60875

VAPOMIST 2

60882

IGLOO

6085

The nature of steam for the well-being of the hair.

Trolley with integrated steamer. Structure in galvanized and powder coated steel. Equipped with a set of swiveling wheels and handle. Removable demineralized water container. Integrated touch control panel with ignition / production / water level indication.

Trolley with integrated steamer and steel structure. Equipped with swivel wheels and carrying handle. Removable demineralized water container. Integrated touch control panel. Production of atomised cold water. Timed regulation system for the quantity of steam delivered. Integrated water disinfection system with high intensity UV lamp. Integrated 2 in 1 dispenser for the distribution of hot steam and cold atomization.

Igloo shell in transparent polycarbonate with operator access door. Available for all Maletti wash units.



Hub

DIMENSIONS
 ↑ 63 cm ↗ 18 cm → 34 cm

DIMENSIONS
 ↑ 63 cm ↗ 18 cm → 44 cm

DIMENSIONS
 ↑ 63 cm ↗ 58 cm → 29 cm



PORTABLE WASHUNIT **HUB**

Wash unit on wheels without the need for floor connection.

Designed to be integrated into a reclining chair, equipped with shower with water saving device that allows you to save 6/7 liters per minute (50% less a. Corian top and laminate structure. Equipped with tanks of water with a capacity of 15 and 12 liters, with electrical connection or with battery (average duration 20 cycles).



DIMENSIONS
 ↑ 106 cm ↗ 104-150 cm → 60 cm

COLOR AND MATERIAL
Oak



other colors available

Elm tree





ARMCHAIR GREEN HUG

P3175

Green HUG is synonymous with comfort and elegance with an eye to sustainability.

The swivel work chair has a veneered plywood frame with base in recycled aluminum and padding in natur-bio expanded polyurethane with 20% natural polyols.

DIMENSIONS
 ↑ 79-90 cm ↗ 61 cm → 61 cm

COLOR AND MATERIAL
Oak



other colors available

Elm tree





ARMCHAIR GREEN HUG RECLINABLE

Green Hug synonymous with comfort and elegance with attention to sustainability.

The armchair has a back in FSC-certified laminated plywood.
 The backrest support bar is made of steel.
 Padding in organic polyurethane foam.
 Reclining backrest with adjustable headrest.
 Hydraulic pump that can be supplied with 80% biodegradable oils.

DIMENSIONS
 ↑ 100 cm ↗ 86-108 cm → 60 cm

COLOR AND MATERIAL
Oak



other colors available

Dark version





COLOR AND MATERIAL
Clear (with contrast)



ARMCHAIR ECO FUN

Eco Fun Chair, the armchair designed by Christophe Pillet, is a perfect example of Beauty Design.

Furniture with a light and young soul that embellishes spaces while respecting the environment. The seat is made of recycled plastic and molded polyurethane foam with insert metal on a reusable aluminum base.

other colors available

Dark version



other colors available

Clear (no contrast)



DIMENSIONS

↑ 85-96 cm ↗ 62 cm → 63 cm



TECHNICAL TABLE 1 P

1 seat technical table with removable mirror
48 cm in diameter.

Part in FSC certified wood with top in extra-clear tempered glass.
Equipped with stainless steel footrest and hairdryer holder.



DIMENSIONS
↑ 80 cm ↗ 35 cm → 100 cm

COLOR AND MATERIAL
Oak



other colors available

Elm tree





WALL STYLING UNIT 1P **OBLÒ**

Minimal design and maximum durability.

Wall shelf with low energy consumption LED backlit mirror.
FSC-certified wood facade panel. Phon holder to be fixed to the wall.

DIMENSIONS
↑ 180 cm ↗ 30 cm → 95 cm



COLOR AND MATERIAL
Oak

other colors available

Elm tree





WALL STYLING UNITS 2P **OBLÒ**

Minimal design and maximum durability.

Mirrors with supporting structure in melamine wood th. 25mm.
5 mm front mirror, secured with an FSC certified wood frame.
Low energy consumption LED lighting.
Fastening of bayonet quick coupling brackets.

Low cabinet with structure and shelves in FSC certified wood with extra-clear glass top transparent tempered.



DIMENSIONS: LOW CABINET
↑ 80 cm ↗ 35 cm → 260 cm

DIMENSIONI: MIRROR
↑ 95,5 cm ↗ 4 cm → 95,5 cm

COLOR AND MATERIAL
Oak



other colors available

Elm tree





DESK PMR

The crates are designed to meet PMR accessibility specifications for people with reduced mobility.

Reception desk with structure in FSC certified wood. Adapted to accommodate people with reduced mobility.



DIMENSIONS
↑ 80 cm

COLOR AND MATERIAL Oak



other colors available

Elm tree





EXHIBITION BACKWASH CABINET

Multifunctional design. Backwash furniture, manufactured made of FSC-certified wood, they are designed for recycling, including the washbasin with mixer that reduces water consumption.

Moble backwash set up for the installation of display furniture. Entirely made of FSC certified wood, water repellent, top and front in transparent glass. Equipped with sink and mixer to reduce water consumption, low module with dedicated space for separate waste collection.

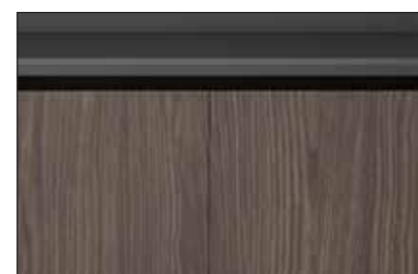
DIMENSIONS
 ↑ 211 cm ↗ 40 cm → 240 cm

COLOR AND MATERIAL
 Oak



other colors available

Elm tree





MAGNETIC EXHIBITOR

Magnetic bottom display with 5 shelves.

Matt white or black structure. Shelves available in black, black glass or transparent. Magnetic graphics optional.

DIMENSIONS:
 ↑ 198 cm ↗ 23 cm → 80 cm

7/ HUB: the wash unit on wheels without the need for a connection on the ground.



Our range

The devices of the 100% Safe line offer a totally safe environment for operators and customers thanks to UVC technology.

of products for security



UVC-SCRIGNO TROLLEY
sterilizes tools such as brushes, combs, scissors in seconds.



UVC-MANHATTAN TROLLEY
integrates a UV-C ray drawer for thorough sterilization of instruments.



PLEXI SEPARATORS TUDOR
guarantees the correct distance both for the operator and the customer and between the wash units.

↑ 105 cm ↗ 16 cm → 32 cm ↑ 43,1 cm ↗ 5,25 cm → 12,4 cm



UVC-TOTEM AND UVC-MINI TOTEM
they also sanitize the air in a continuous cycle in the presence of people by exploiting the germicidal and virucidal action of UVC rays.



STATION AND KUBETTO
allows you to measure the temperature, sanitize shoes and sanitize the hands of those arriving from the outside in a single moment.



BLOCK
it cuts down 99% of the bacterial load from everyday objects.

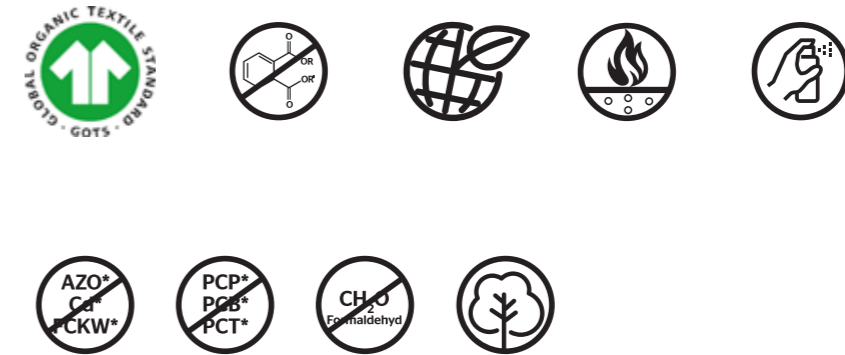
Our materials

The Maletti Group research and development department works to the creation of low environmental impact materials with excellent technical characteristics, favoring partnerships with suppliers who share yours same values in terms of eco-sustainability.

attentive to the environment

LEATHER EFFECT a biological solution

Resilient, ecological and scalable are the relevant adjectives for this new range of biosynthetic products. Over 80% of the components used are made with natural and renewable materials. Maletti proposes a skai in which the conventional phthalate plasticizers have been replaced by a new type of plasticizer based on renewable raw materials. It also incorporates an organic cotton backing that meets stringent GOTS standards.



CREAM

BIRCH

SMOKE

LIGHT GREY

CURRY

CACTUS

CHERRY

ORCHID

CHOCO

ANTHRACITE

LEATHER EFFECT a biological solution

Resilient, ecological and scalable are the relevant adjectives for this new range of biosynthetic products. Over 80% of the components used are made with natural and renewable materials. Maletti proposes a skai in which the conventional phthalate plasticizers have been replaced by a new type of plasticizer based on renewable raw materials. It also incorporates an organic cotton backing that meets stringent GOTS standards.

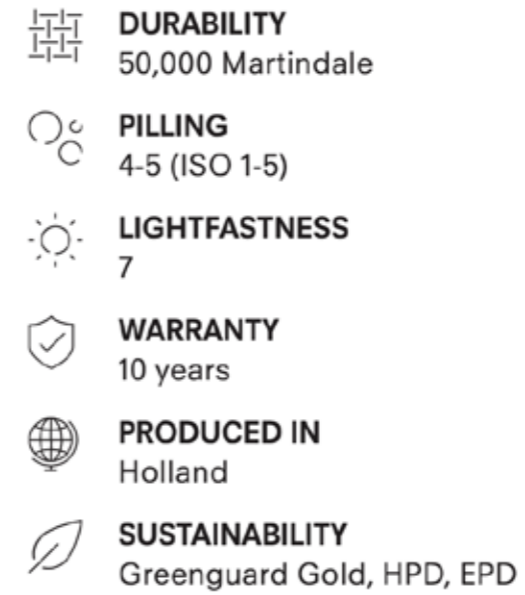


CAFFÈ/ COFFEE NOCCIOLA/ HAZELNUT BORDEAUX CIELO/ SKY

DARK GRAY SALVIA/ SAGE TERRA COTTA NERO/ BLACK

SOFT TOUCH sense for nature

Recyclable, ecological, safe for health, non-toxic, free from: solvents, pvc, pu, pfc, formaldehyde, plasticizers, phthalates, heavy metals, bpa, allergens, anti-bacterial additives, biocides, flame retardant substances. This coating chosen by Maletti is resistant to normal disinfectant agents that contain alcohol, aldehydes, quaternary ammonium compounds, oxygenating agents, alkylamines as active ingredients and is characterized by high resistance to stains.



CORDA/ ROPE SABBIA/ SAND NOCE/ WALNUT BLUE GRAY

MARRONE/ BROWN SENAPE/ MUSTARD MELOGRANO POMEGRANATE ZAFFIRO/ SAPPHIRE

PELLEMELA

the new time of apples

Skai made in Trentino Alto Adige with 50% apple peel waste, Maletti starts from the interest in this form of circular economy to be used for its eco products. Renamed as "pellemela", the ecological leather produced with this process is made according to the quantities requested by the customer.



reaction to fire



EU regulations



Regolamenti UE



ELM TREE



OAK

BIOLOGICAL FOAM

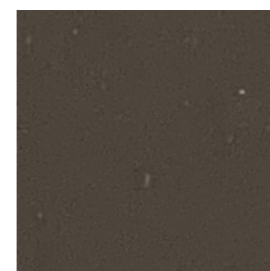
The padding used is certified organic, with a high% of bio-based carbon. The most environmentally friendly material in the industry.

RECYCLED FABRICS

Maletti proposes a new type of coverings from recycled and waste PET to be used in the seats accompanied by skai to create greater comfort. The fabric features a fluorocarbon-free, eco-friendly, water-repellent and quick-drying finish. It also provides resistance to chlorine, sea water and artificial atmospheric agents and is fireproof. In addition to its technical characteristics, it is also distinguished by a softness to the touch.



PANNA/ CREAM



TORTORA/ TAUPE



NERO/ BLACK



CUOIO/ LEATHER

ORGANIC OIL

Maletti has chosen to use biodegradable oils (over 80%) for hydraulic pumps and guides for sliding doors installed on work chairs: an eco-oil range based on natural esters and synthetics designed to reduce lubricant consumption, disposal costs and environmental impact guarantee the best performance.

RECYCLABLE ALUMINUM

Our idea

An experimental journey that accompanies the client in a dimension of well-being for the entire duration of the stay in the salon.

of the experiential salon

The showcases of the show will be equipped with transparent films that will transform the windows into LED screens on which to project videos and images.

At the entrance, the customer will be welcomed in a reception area that will be disinfected with 100% Safe devices (Kubetto, Block, Totem) and furnished with PRM supports.

In a private and intimate location, surrounded by displays and furniture with low consumption light, specific advice will be offered with hot drinks, anti-pollution fruit juices and small local pastries.

Customer relaxation area with hot steam treatments or Up & Down wash unit with PMR functionality for employee health, Water Saver taps and Tudor separator. The Business Class 2.0 cabin will offer a superior experience of well-being and privacy for the most demanding customers.

After washing, you will move on to the color, cut and fold station, embellished with backlit LED shelves or Minimal wooden shelves. The environment and equipment will be disinfected with UVC-Manhattan, Scigno UVC Box, UKI phon light and Sanitizing Totem.

Before the exit, in the sales area, the exhibitors and the monitor present will show the characteristics of the products that can be purchased, for which recycled cartons or organic bags will be used.

Next to the cash desks with PRM supports, an information center will be positioned where you can get information on restaurants, places to visit and major initiatives to experience at the fair.







→ STATION AND KUBETTO



→ DESK RECEPTION PMR



- DESK RECEPTION **PMR**
- TECHNICAL TABLE
- RMCHAIR **GREEN HUG**



- WALL STYLING UNIT 1P **OBLÒ**
- ARMCHAIR **GREEN HUG**
- WALL STYLING UNITS 2P **OBLÒ**
- TROLLEY **SCRIGNO**
- **UVC-TOTEM**



- ARMCHAIR **GREEN HUG**
- WALL STYLING UNITS 2P **OBLÒ**



- WALL STYLING UNIT 1P **OBLÒ**
- ARMCHAIR **GREEN HUG**
- **UVC-TOTEM**



- UVC-TOTEM
- TROLLEY SCRIGNO
- WASH UNITS GREEN STAR
- CLASS+IGLOO
- EXHIBITION BACKWASH CABINET



- **UVC-TOTEM**
- **TROLLEY SCRIGNO**
- **WASH UNITS UP & DOWN+IGLOO**
- **EXHIBITION BACKWASH CABINET**



→ TECHNICAL TABLE 1 P
→ ARMCHAIR GREEN HUG



- WASH UNIT **GREEN STAR CLASS+IGLOO**
- ARMCHAIR **GREEN HUG RECLINABLE**
- WALL STYLING UNIT 1P **OBLÒ**

A large white sailboat is shown from a low angle, sailing on a deep blue sea under a clear, bright blue sky. The sail is partially visible on the right side of the frame. The boat's deck and railing are visible in the lower portion of the image.

a Edgardo Maletti

all'impalpabile aria dell'oceano,
alle frizzanti onde del Mediterraneo,
alle orme sulla sabbia che fugge,
alla scia di poppa
che racconta la nostra strada.

*to the tenuous air of the ocean,
to the sparkling waves
of the Mediterranean sea
to the tracks in the vanishing sand,
to the wake of a ship
which tells our way.*

*a l'air impalpable de l'océan,
aux vagues scintillantes de la Méditerranée,
aux traces de pas sur le sable fuyant,
au sillage de poupe qui raconte
notre chemin.*