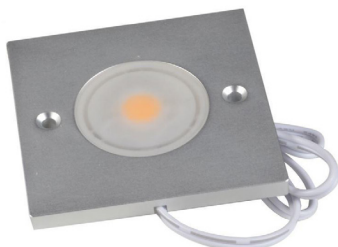


SPECIFICATION SHEET

JOB NAME:

LOCATION:

QUOTE/REF#:



SPECIFICATIONS

Brightness:	330 Lumens
Power:	4.2 Watt
Input Voltage:	12V DC
LED CCT:	3000K or 5000K
IP Rating:	IP20
Environment:	Indoor Use - Dry Location
Dimmable:	Yes, if used with Dimmable Driver
Beam Angle:	105°
Length:	2.36 in / 59.94 mm
Width:	2.36 in / 59.94 mm
Height:	0.22 in / 5.59 mm
Finish:	Black, Satin Nickel,
Mounting:	Surface Mount
Manufacturer:	Elumalight
Rating:	UL, ETL Listed
Avg. Lifetime:	± 30,000 - 50,000 hours

*** Required:** The LED Puck Light requires 12V DC LED Driver, Junction Boxes, and Extension Cords. Sold separately.

DESCRIPTION

The 12V DC LED Square Puck Light is bright, ultra-low profile, and low power consumption. It is the perfect light source for any retail display, exhibit, commercial, or residential lighting applications.

Our LED Square puck lights are ultra-low profile and versatile to fit into small spaces and provide smooth lighting to under cabinet, under shelves, retail display cases, or general lighting applications. It is easy to install our LED Puck lights whether recessed or surface mount while allowing easy replacement removal when necessary.

Available in Satin Nickel or Black finish in 5000K Cool White or 3000K Warm White Color Temperature options.

KEY FEATURES

- Maintenance-free
- Solid-State Construction
- No IR or UV radiation
- Suitable for flat ceilings, sloped ceiling, or under-cabinet installations
- Easy to mounting and install
- LEDs Chipsets are high intensity, ultra-bright, and energy-efficient
- No RF interference
- Long lifespan: Up to 50,000 hours

APPLICATIONS

- Decorative Lighting for Tradeshows, Exhibition, Retail Displays
- Architectural lighting for corridors, canopies, archways,
- Downlighting or Uplighting Recessed Applications
- Gallery and Museum Lighting
- Under-cabinet, Under-Counter, or accent lighting

