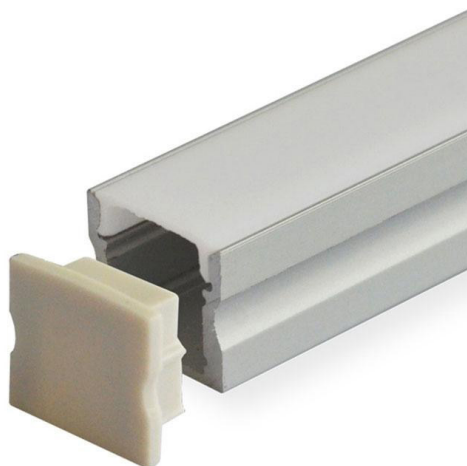


## SPECIFICATION SHEET

JOB NAME:

LOCATION:

QUOTE/REF#:



### DESCRIPTION

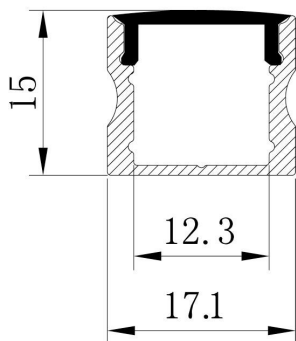
LED Deep Surface Aluminum Channel includes our aircraft grade aluminum channel and compatible frosted lens. Creating a rigid, modern, and sleek style LED strip light installation has never been easier.

### KEY FEATURES

- It comes in 2-meter sections and can be custom cut to any length.
- 17.02 mm wide by 15.24 mm height.
- Perfect for mounting LED Strip Light up to 12 mm in width.
- Rigid and dustproof housing can be surface or recess mounted.
- Includes aluminum channel, diffuser, 2 mounting clips, and 2 end caps.
- The Channel lens protects LED strip light from the environment and creates diffused lighting effects. Easy to install, simply clip the diffuser lens into the aluminum channel.

### SPECIFICATIONS

**Channel Height:** 0.6 in / 15.24 mm thick  
**Inside Width:** 0.48 in / 12.3 mm wide  
**Outside Width:** 0.67 in / 17.1 mm wide  
**Length:** 78 in / 2 meters long  
**LED Strip Width:** up to 12 mm  
**Lens Finish:** Frosted or Opal White  
**Environment:** Indoor Use, Dry Locations  
**Finish:** Aluminum  
**Manufacturer:** Elumalight



Unit: mm

### APPLICATIONS

- For use with LED Strip lights up to 12 mm in width.

