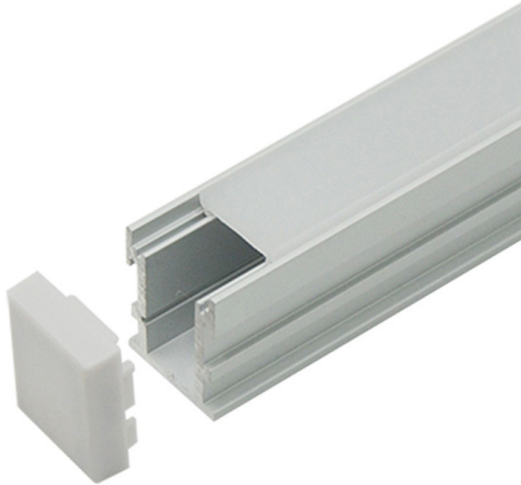


SPECIFICATION SHEET

JOB NAME:

LOCATION:

QUOTE/REF#:



DESCRIPTION

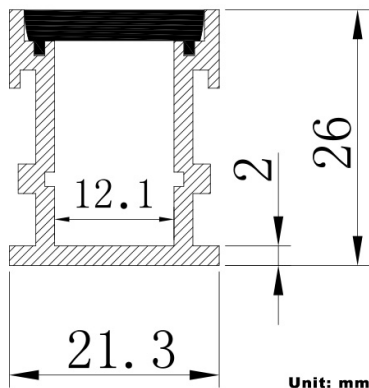
LED In-Ground Aluminum Channel can protect and provide better light diffusion for indoor LED tape light applications. The channels provide a rigid, dustproof housing that can be mounted on almost any type of recessed application.

KEY FEATURES

- High-quality diffuser, placing/removing from the front on click
- For indoor use only
- Made from anodizing aluminum, UV resistant.
- Rigid and dustproof housing can be surface mounted.
- Includes aluminum channel, opal white lens, 2 end caps.
- The Channel lens protects LED strip light from the environment and creates diffused lighting effects. Easy to install, simply clip the diffuser lens into the aluminum channel.
- LED Aluminum Mounting Channels do not qualify for the Free Standard Shipping offer. Additional shipping charges will be billed separately.
- Aluminum channels are not returnable due to the packaging and shipping costs.

SPECIFICATIONS

Channel Height: 1.02 in / 26 mm thick
Inside Width: 0.47 in / 12.1 mm wide
Outside Width: 0.83 in / 21.3 mm wide
Length: 78 in / 2 meters long
LED Strip Width: up to 12 mm
Lens Finish: Opal White
Environment: Indoor Use, Dry Locations
Finish: Aluminum
Manufacturer: Elumalight



APPLICATIONS

- Trade Show Booth
- Stores shelf LED lighting
- Retail Store Display Lighting
- Heat sink and physical protection to the LEDs
- Independent Linear LED Lamp

