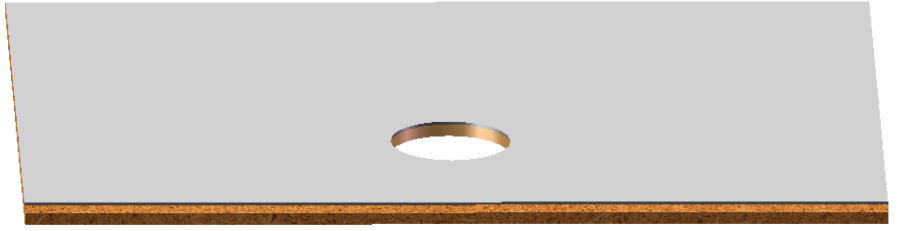
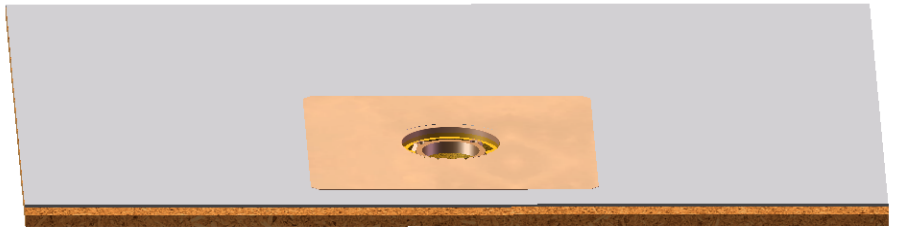


# Linear Shower Drain Installation

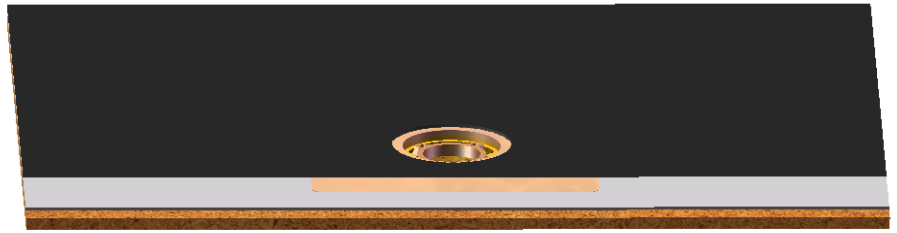
1. Apply base sheet to substrate.



2. Nail drain basin to substrate.



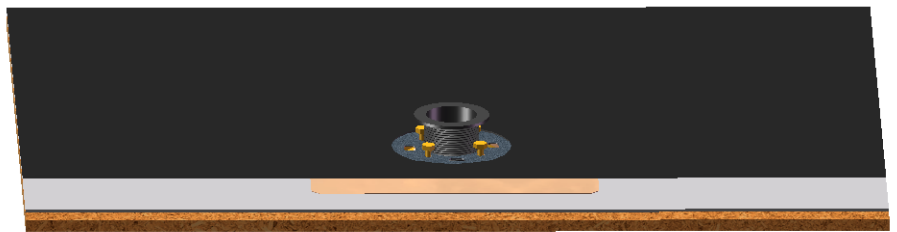
3. Apply waterproofing to drain basin. prime drain flashing if required.



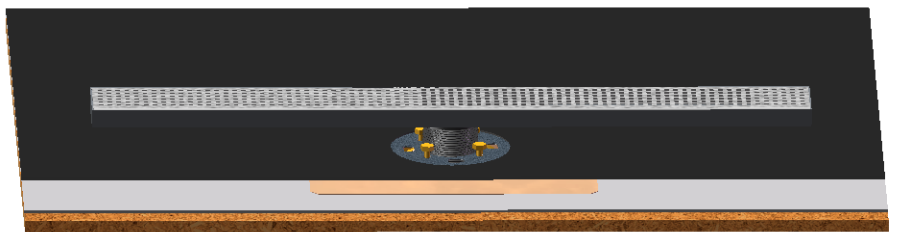
4. Mechanically attach clamping ring with supplied hardware.



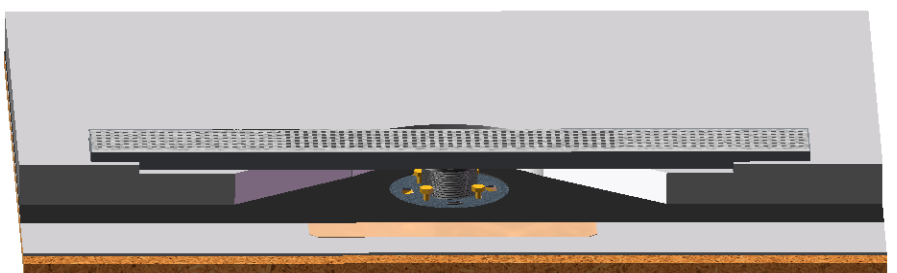
5. Set adjuster to desired height.



6. Place linear grate body into adjuster.



7. Apply mortar to desired height. use caution to avoid mortar entering weep holes.



8. Install tile to finish height.

