



GOeX

FEEL GOOD. DO GOOD.

2024 PRODUCT



# FEEL GOOD. DO GOOD.

**GOEX USES A SIMPLE TEE TO CONNECT THE CUSTOMER AND THE WORKER. OUR CUSTOMERS SUSTAIN FAIR WAGE JOBS THAT LIBERATE WORKERS FROM POVERTY AND EMPOWER THEM IN THEIR FAMILIES AND COMMUNITIES.**

**HOW DOES A SHIRT DO THIS?**

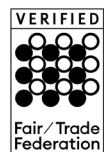
**FAIR WAGES, DIGNIFIED EMPLOYMENT THAT STRENGTHENS FAMILIES.**

**SUSTAINABLE FABRICS OR COMPONENTS IN EVERY GARMENT**

**SOCIAL IMPACT THROUGHOUT THE SUPPLY CHAIN**

**HIGH QUALITY, FAIR TRADE MANUFACTURING**

**USA FABRICS CUT AND SEWN IN HAITI TO LOWER THE CARBON FOOTPRINT**





# WHY A BETTER SHIRT?

**According to Fashion Revolution, the apparel industry employs 300 million people globally, but only about 2% of those people earn a livable wage.**

**In recent statistics given by earth.org, the textile industry is responsible for 35% of microplastic pollution and 10% of carbon emissions. Only 15% of garments are recycled or donated each year.**

**US consumers have the power to dramatically change these statistics. At GOEX and other fair trade, sustainable apparel companies, consumers have the opportunity to contribute to family strengthening and job creation programs around the world. By simply choosing a better shirt *YOU* have the ability to change lives.**



# TABLE OF CONTENTS

INTRO	2
OUR STORY	4
TRIBLEND	6
COTTON	8
FLEECE	10
ECO BLENDS	12
POLY	13
UNISEX	14
ACCESSORIES	18
LADIES	19
YOUTH	22
CUSTOMIZE	24
SIZE CHART	28

---







# Eco Triblend

**Our USA triblend fabric is now made with 50% CiCLO® Bio-degradable Polyester (OEKO-TEX® ECO PASSPORT certified chemistry that causes the polyester to break-down in the environment at the same rate as cotton.), 37% Cotton, and 13% TENCEL™ (which is made from renewable raw material wood created by photosynthesis and can revert fully back to nature). At 4.4 oz it slightly heavier weight than many triblend, keeping this shirt looking great wash after wash.**

*\*There will be mixed inventory in some colors of CiCLO® Poly and REPREVE® Poly as we transition to this new fiber.*

## SWATCHES



01-VINTAGE WHITE\*\*



06-HEATHER GREY



02-CHARCOAL



09-WINE



15-SAGE



14-TEAL



13-GRASS



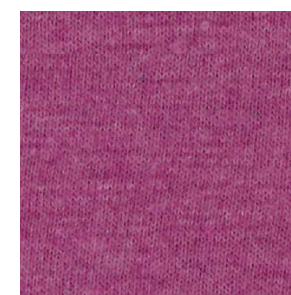
12-OLIVE



18-ROSE



10-NEON PINK



16-BERRY



05-RED



17-LAVENDER



20-LIGHT BLUE



04-ROYAL



06-HEATHER NAVY



08-MUSTARD



21-AMBER

\*\* WHILE SUPPLIES LAST



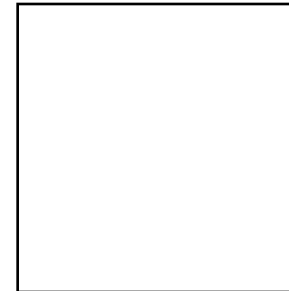


# Cotton

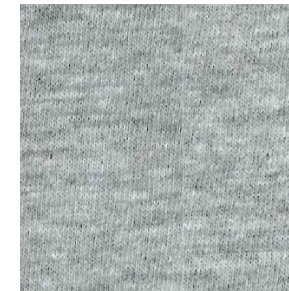
**Our USA premium cotton fabric is a super-soft 100% ringspun cotton. At 4.45 oz, it is the perfect weight for comfort and wearability.**

**Our USA standard cotton is a more economical choice. The open end construction gives it a heavier, more substantial feel (weighing in at 4.7 oz). This fabrication is available in limited colors while supplies last.**

## SWATCHES



**01-WHITE**  
PREMIUM AND STANDARD COTTON



**03-OXFORD\*\***  
PREMIUM AND STANDARD COTTON



**02-BLACK**  
PREMIUM AND STANDARD COTTON



**08-MARIGOLD\*\***



**11-ORANGE\*\***



**05-RED**



**19-CARDINAL\*\***



**10-BUBBLEGUM\*\***



**16-PURPLE\*\***



**06-NAVY**



**04-ROYAL**



**15-MINT\*\***



**13-KELLY GREEN\*\***



**22-ATOMIC GREEN\*\***  
STANDARD COTTON

\*\* WHILE SUPPLIES LAST





# Eco Fleece

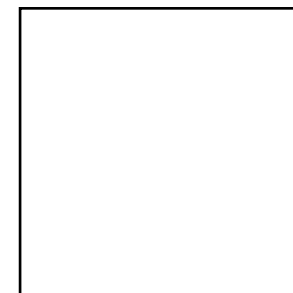
**Our USA Premium Fleece fabric is super soft, super warm. Made from 80% Cotton/20% CiCLO® Polyester and weighing 8.75oz, this fabric is a must have when you need to stay extra cozy.**

**Our USA Heathered Fleece fabric is made in partnership with CiCLO®. Their patented technology transforms synthetic fibers into biodegradable fibers that can be re-absorbed into the eco-system. It is lighter weight (7.2oz) and even softer than our Premium Fleece. Made from 50% Cotton/25% Poly/25% CiCLO®, this fabric has the perfect balance of warmth and breathability.**

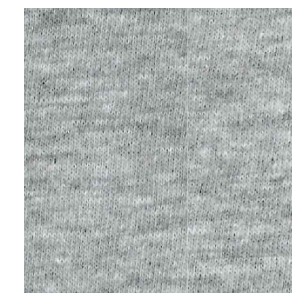
*\*There will be mixed inventory in some colors of CiCLO® Poly and REPREVE® Poly as we transition to this new fiber.*

## SWATCHES

### PREMIUM FLEECE



01-WHITE



03-OXFORD



02-BLACK



21-CAMEL



06-NAVY



04-ROYAL\*\*

### HEATHERED FLEECE



23-IVORY



06-HEATHER GREY



02-CHARCOAL



12-OLIVE



14-TEAL



20-LIGHT BLUE



18-ROSE



10-NEON PINK



05-RED

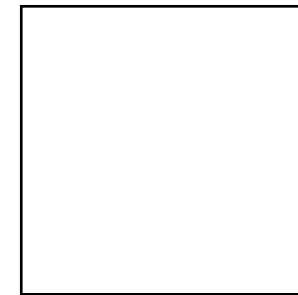
\*\* WHILE SUPPLIES LAST





# Polyester Repreve

Our USA Polyester is made from 100% REPREEVE® Polyester. REPREEVE® turns plastic bottles into certifiable, traceable, high-performance yarn. The contents of your recycling bin become our lightweight 3.54oz performance interlock that is perfect for activewear and the office.



01-WHITE\*



03-COOL GREY\*\* \*\*



07-GREY



26-HEATHER GREY\*\* \*\*



02-BLACK



06-NAVY



22-SAFETY YELLOW

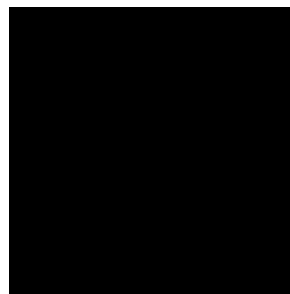


11-NEON ORANGE\*\* \*\*

\*\* WHILE SUPPLIES LAST \*NOT REPREEVE

# Eco Cotton Blends

Our Eco Cotton collection has various blends of Upcycled Cotton. Knit and finished in the USA, these fabrics have an earthy hand-feel and visual appearance.



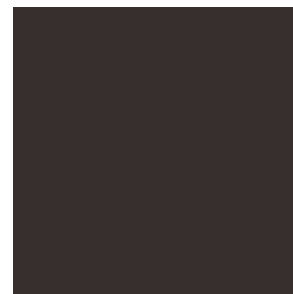
02-BLACK  
50Z  
50% Upcycled Cotton  
47% Recycled PET  
3% Other Fibers



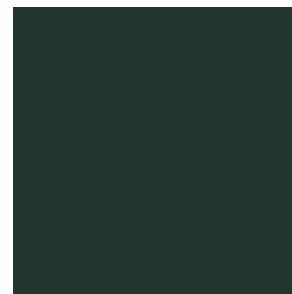
23-IVORY  
50Z  
50% Upcycled Cotton  
50% Organic Cotton



25-FUNFETTI  
4.50Z  
48% Upcycled Cotton  
46% Recycled PET  
6% Viscose



24-EARTH\*\*  
4.20Z  
50% Upcycled Cotton  
50% Organic Cotton



12-FOREST  
4.20Z  
50% Upcycled Cotton  
50% Recycled PET

\*\* WHILE SUPPLIES LAST





# UNISEX APPAREL



UNISEX SS ECO TRIBLEND TEE

XS-3XL  
USA FABRIC  
50% CICIOLO® POLY  
37% COTTON  
13% TENCEL™  
4.4 OZ

01*	07	02	08	21	05
09	18	10	16	17	06
04	20	14	15	13	12

\*WHILE SUPPLIES LAST



UNISEX SS PREMIUM COTTON TEE

XS-3XL  
USA FABRIC  
100% RINGSPUN  
COTTON  
4.4 OZ

01	03*	02	08*	11*	05
19*	10*	16*	06	04	15*
13*					

\*WHILE SUPPLIES LAST



UNISEX SS STANDARD COTTON TEE

XS-3XL  
USA FABRIC  
100% OPEN END  
COTTON  
4.7 OZ

01*	03*	22*
-----	-----	-----

\*WHILE SUPPLIES LAST



UNISEX ECO TRIBLEND POLO

XS-3XL  
USA FABRIC  
50% CICIOLO® POLY  
37% COTTON  
13% TENCEL™  
4.4 OZ

02	06	12
----	----	----



UNISEX POLY POLO

XS-3XL  
USA FABRIC  
100% POLYESTER  
REPREVE®  
4.4 OZ

03*	06	02
-----	----	----

\*WHILE SUPPLIES LAST



UNISEX TRIBLEND TANK

XS-3XL  
USA FABRIC  
50% CICIOLO® POLY  
37% COTTON  
13% TENCEL™  
4.4 OZ

00*	07	02	20
-----	----	----	----

\*WHILE SUPPLIES LAST



UNISEX SS ECO COTTON TEE

XS-3XL  
USA FABRIC  
50% UPCYCLED COTTON | 50% ORGANIC COTTON - 5OZ  
50% UPCYCLED COTTON | 50% RECYCLED PET-4.2OZ  
48% UPCYCLED COTTON | 46% RECYCLED PET | 6% VISCOSE - 4.5OZ  
50% UPCYCLED COTTON | 47% RECYCLED PET | 3% OTHER FIBERS - 5OZ  
50% UPCYCLED COTTON | 50% ORGANIC COTTON - 4.2OZ

02	12	23	25	24*
----	----	----	----	-----

\*WHILE SUPPLIES LAST



UNISEX SS POLY REPREVE® TEE

XS-3XL  
USA FABRIC  
100% POLYESTER  
REPREVE®  
4.4 OZ

01	07	02	06	22
----	----	----	----	----



UNISEX SS ECO TRIBLEND V NECK TEE

XS-3XL  
USA FABRIC  
50% CICIOLO® POLY  
37% COTTON  
13% TENCEL™  
4.4 OZ

05	07	02
----	----	----



UNISEX LS ECO TRIBLEND TEE

XS-3XL  
USA FABRIC  
50% CICIOLO® POLY  
37% COTTON  
13% TENCEL™  
4.4 OZ

02	07	20	05
----	----	----	----



UNISEX LS PREMIUM COTTON TEE

XS-3XL  
USA FABRIC  
100% RINGSPUN  
COTTON  
4.4 OZ

01	03*	02
----	-----	----

\*WHILE SUPPLIES LAST



UNISEX LS POLY TEE

XS-3XL  
USA FABRIC  
100% POLYESTER  
REPREVE®  
4.4 OZ

02	22	11*
----	----	-----

\*WHILE SUPPLIES LAST



# UNISEX APPAREL



UNISEX LS HOODED TEE

302UH  
XS-3XL  
USA FABRIC  
50% CICLO® POLY  
37% COTTON  
13% TENCEL™  
4.4 OZ



UNISEX ECO COTTON HENLEY

803U  
XS-3XL  
USA FABRIC  
50% UPCYCLED COTTON | 50% ORGANIC COTTON  
50% UPCYCLED COTTON | 47% RECYCLED PET | 3% OTHER FIBERS  
5 OZ



UNISEX SS POLY REPREVE® 1/4 ZIP

204U  
XS-3XL  
USA FABRIC  
100% POLYESTER  
REPREVE®  
4.4 OZ

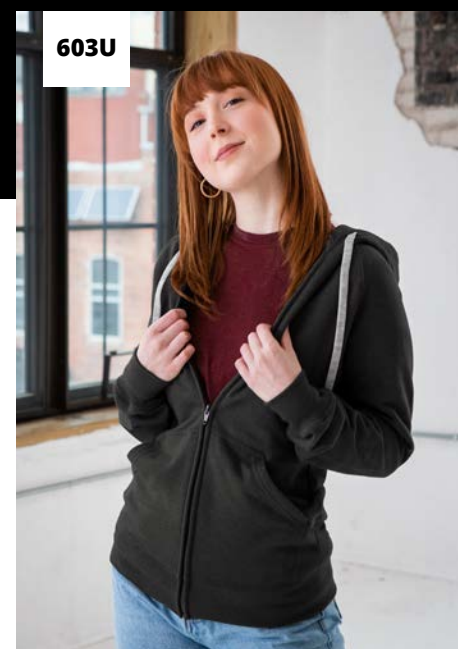


\*WHILE SUPPLIES LAST  
RECYCLED OCEANWORKS® +YKK ZIPPER



UNISEX HEATHERED FLEECE CREW

602U  
XS-3XL  
USA FABRIC  
50% COTTON  
50% CICLO® POLY  
7.2 OZ



UNISEX FLEECE FULL ZIP

603U  
XS-3XL  
USA FABRIC  
50% COTTON  
50% CICLO® POLY  
7.2 OZ



\*WHILE SUPPLIES LAST  
RECYCLED OCEANWORKS® +YKK ZIPPER



UNISEX RIB FULL ZIP

603UR  
S-2XL  
USA FABRIC  
50% COTTON  
50% CICLO® POLY  
7.2 OZ



\*MADE FROM REMNANT FABRIC. COLORS WILL VARY BASED ON AVAILABILITY  
RECYCLED OCEANWORKS® +YKK ZIPPER



UNISEX PREMIUM FLEECE PULLOVER

401U  
XS-3XL  
USA FABRIC  
80% COTTON  
20% CICLO® POLY  
8.75 OZ



UNISEX HEATHERED FLEECE PULLOVER

601U  
XS-3XL  
USA FABRIC  
50% COTTON  
50% CICLO® POLY  
7.2 OZ



UNISEX PREMIUM FLEECE CREW

402U  
XS-3XL  
USA FABRIC  
80% COTTON  
20% CICLO® POLY  
8.75 OZ



\*WHILE SUPPLIES LAST



UNISEX PREMIUM FLEECE 1/4 ZIP

404U  
XS-3XL  
USA FABRIC  
80% COTTON  
20% CICLO® POLY  
8.75 OZ



\*WHILE SUPPLIES LAST



UNISEX FLEECE JOGGER

601UJ  
XS-3XL  
USA FABRIC  
50% COTTON  
50% POLY  
7.2 OZ

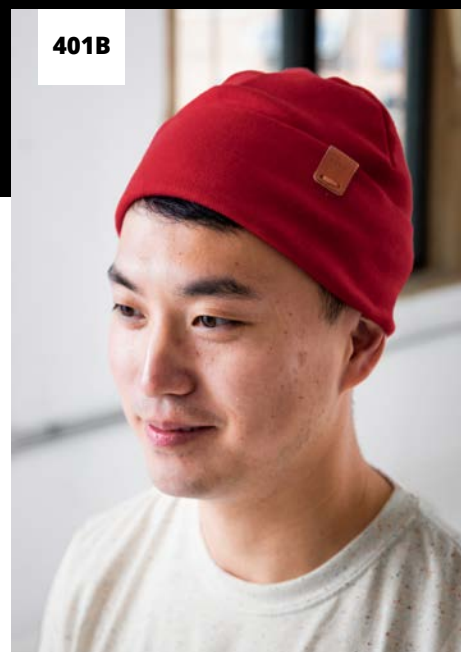


\*WHILE SUPPLIES LAST



# ACCESSORIES

# LADIES APPAREL



401B

UNISEX BEANIE

ONE SIZE



USA FABRIC  
80% COTTON | 20% CICLO® POLY 8.75 OZ  
50% COTTON | 50% CICLO® POLY 7.2 OZ

\*MADE FROM REMNANT FABRIC, COLORS WILL VARY BASED ON AVAILABILITY



TOTE

CANVAS TOTE BAG

ONE SIZE



USA FABRIC  
100% COTTON

8.7 OZ



HAT

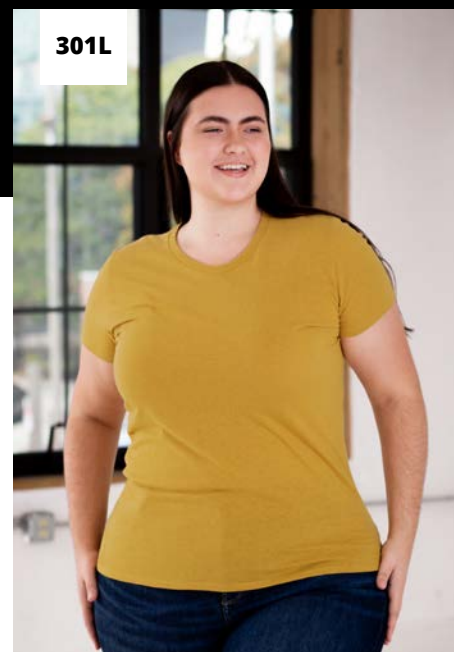
UNISEX TRUCKER HAT

ONE SIZE



MADE IN INDONESIA FROM  
UPCYCLED AND RECLAIMED MATERIALS  
100% COTTON TWILL FRONT  
100% POLY MESH BACK

\*OTHER STYLES/COLORS  
AVAILABLE UPON REQUEST



301L

LADIES SS ECO TRIBLEND TEE

S-2XL

USA FABRIC  
50% REPVE® POLY  
37% COTTON  
13% TENCEL™

4.4 OZ



\*WHILE SUPPLIES LAST



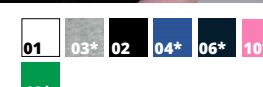
101L

LADIES SS PREMIUM COTTON TEE

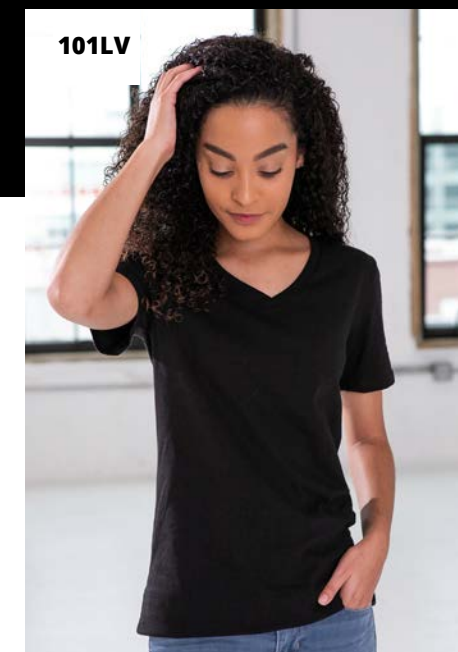
S-2XL

USA FABRIC  
100% RINGSPUN  
COTTON

4.4 OZ



\*WHILE SUPPLIES LAST



101LV

LADIES SS V NECK TEE

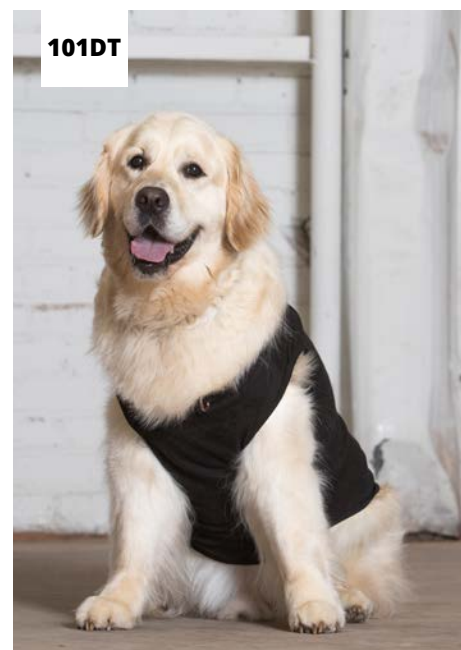
S-2XL

USA FABRIC  
100% RINGSPUN  
COTTON

4.4 OZ



\*WHILE SUPPLIES LAST



101DT

DOG TANK

XS-3XL

USA FABRIC  
100% RINGSPUN  
COTTON

4.4 OZ



\*WHILE SUPPLIES LAST



BASEBALL HAT

UNISEX BASEBALL HAT

ONE SIZE - MADE TO ORDER



MADE IN INDONESIA FROM  
UPCYCLED AND RECLAIMED MATERIALS  
100% COTTON TWILL



BLANKET

UNISEX SS POLY REPVE® TEE

ONE SIZE - 64" W X 72" L

USA FABRIC  
50% POLY  
25% COTTON  
25% RAYON

4.4 OZ



\*MADE FROM REMNANT FABRIC, COLORS WILL VARY BASED ON AVAILABILITY



101LC

LADIES CROP TEE

S-2XL

USA FABRIC  
100% RINGSPUN COTTON  
50% UPCYCLED COTTON | 50% ORGANIC COTTON

4.4 OZ | 5 OZ



\*WHILE SUPPLIES LAST



301LF

LADIES FLOWY TEE

S-2XL

USA FABRIC  
50% REPVE® POLY  
37% COTTON  
13% TENCEL™

4.4 OZ



\*WHILE SUPPLIES LAST



301LD

LADIES ECO TRIBLEND DROP HEM TEE

XS-3XL

USA FABRIC  
50% REPVE® POLY  
37% COTTON  
13% TENCEL™

4.4 OZ





# LADIES APPAREL



801LD

LADIES ECO COTTON DROP HEM TEE

XS-3XL  
USA FABRIC  
48% UPCYCLED COTTON  
46% RECYCLED PET  
6% VISCOSE  
4.4 OZ

25



301LT

LADIES TRIBLEND RIB TANK

S-2XL  
USA FABRIC  
50% REPREVE® POLY  
37% COTTON  
13% TENCEL™  
4.4 OZ

01\* 07\* 05\* 09\* 18\* 10\*  
17\* 04\* 20\* 14\* 13\*

\*MADE FROM REMNANT FABRIC, COLORS WILL VARY BASED ON AVAILABILITY



101LT  
801LT

LADIES COTTON RIB TANK

S-2XL  
USA FABRIC  
100% RINGSPUN COTTON 4.4OZ  
50% UPCYCLED COTTON | 50% ORGANIC COTTON 5OZ  
50% UPCYCLED COTTON | 47% RECYCLED PET | 3% OTHER FIBERS 5 OZ

01\* 23\* 03\* 02\* 05\* 10\* 16\*  
13\* 06\* 04\* 15\*

\*MADE FROM REMNANT FABRIC, COLORS WILL VARY BASED ON AVAILABILITY



601LS

LADIES WEEKENDER HOODIE

S-3XL  
USA FABRIC  
50% COTTON  
25% CICLO®  
25% POLYESTER  
7.2 OZ

23 07\* 02\* 12 18

\*WHILE SUPPLIES LAST



601LC

LADIES CROPPED PULLOVER

S-2XL  
USA FABRIC  
50% COTTON  
25% CICLO®  
25% POLYESTER  
7.2 OZ

23\* 02\*

\*WHILE SUPPLIES LAST



602L

LADIES COMFY CREW

S-2XL  
USA FABRIC  
50% COTTON  
25% CICLO®  
25% POLYESTER  
7.2 OZ

07\* 02\*

\*WHILE SUPPLIES LAST



602LC

LADIES RIB CARDIGAN

S-2XL  
USA FABRIC  
50% REPREVE® POLY  
37% COTTON  
13% TENCEL™  
4.4 OZ

00\* 01\* 07\* 02\* 08\* 21\*  
05\* 09\* 16\* 06\* 15\* 13\*  
12\*

\*MADE FROM REMNANT FABRIC, COLORS WILL VARY BASED ON AVAILABILITY



302L

LADIES LS TRIBLEND TEE

S-2XL  
USA FABRIC  
50% REPREVE® POLY  
37% COTTON  
13% TENCEL™  
4.4 OZ

07 02



102L

LADIES LS PREMIUM COTTON TEE

S-2XL  
USA FABRIC  
100% RINGSPUN COTTON  
4.4 OZ

01\* 03\* 02\* 06\*

\*WHILE SUPPLIES LAST





# YOUTH APPAREL



**301Y**

YOUTH SS ECO TRIBLEND TEE

XXS-L  
USA FABRIC  
50% REPREVE® POLY  
37% COTTON  
13% TENCEL™  
4.4 OZ

01*	07	02	08	21	05
09	18	10	16	17	06
04	20	14	15	13	12

\*WHILE SUPPLIES LAST



**101Y**

YOUTH SS PREMIUM COTTON TEE

XS-L  
USA FABRIC  
100% RINGSPUN COTTON  
4.4 OZ

01	03*	02	05	19*	10*
16*	06	04	15*	13*	

\*WHILE SUPPLIES LAST



**501Y**

YOUTH SS STANDARD COTTON TEE

XS-L  
USA FABRIC  
100% OPEN END COTTON  
4.7 OZ

01*	03*	02*	22*
-----	-----	-----	-----

\*WHILE SUPPLIES LAST



**101GT**

YOUTH PREMIUM COTTON TANK

XS-L  
USA FABRIC  
100% RINGSPUN COTTON  
4.4 OZ

10*	04*	05*
-----	-----	-----

\*WHILE SUPPLIES LAST



**402Y**

YOUTH PREMIUM FLEECE CREW

XXS-L  
USA FABRIC  
73% COTTON  
19% POLYESTER  
8% RECYCLED POLYESTER  
8.75 OZ

01	03	02	04*	06
----	----	----	-----	----

\*WHILE SUPPLIES LAST



**602Y**

YOUTH HEATHERED FLEECE CREW

XXS-L  
USA FABRIC  
50% COTTON  
50% CICIO® POLY  
7.2 OZ

23	07	05	10	18
14	20			



**801Y**

YOUTH SS ECO COTTON TEE

XXS-L  
USA FABRIC  
50% UPCYCLED COTTON | 50% ORGANIC COTTON - 5OZ  
50% UPCYCLED COTTON | 50% RECYCLED PET-4.2OZ  
48% UPCYCLED COTTON | 46% RECYCLED PET | 6% VISCOSE - 4.5OZ  
50% UPCYCLED COTTON | 47% RECYCLED PET | 3% OTHER FIBERS - 5OZ

02	12	23	25
----	----	----	----



**302Y**

YOUTH LS ECO TRIBLEND TEE

XS-L  
USA FABRIC  
50% REPREVE® POLY  
37% COTTON  
13% TENCEL™  
4.4 OZ

02
----



**302YH**

YOUTH LS HOODED TEE

XS-L  
USA FABRIC  
50% REPREVE® POLY  
37% COTTON  
13% TENCEL™  
4.4 OZ

04	07
----	----







## 1. Send Us Your Design

Art files must be high resolution, preferably vector. Proofs will be provided on the garments you select for final approval. You must specify PMS colors if exact ink color matching is required.



YOUR DESIGN

+



OUR TEE

=



FINAL PRODUCT  
UNISEX CHARCOAL LS TRIBLEND TEE

## 2. Modify a Design from our Graphic Collection

Changes could include text, colors, logos, part of the image, etc. Proofs will be provided on garments you select for approval. Your Sales Rep will let you know if changes will require an art fee. Check out our full Graphic Catalog [HERE](#).



OUR DESIGN

+



YOUR CHANGES

=



FINAL PRODUCT  
UNISEX IVORY ECO COTTON TEE

# Customize with GOEX!

GOEX offers more than comfy tees and fleece! We also offer customization on any of our apparel items. Here are options for working with our art team to customize your order:



### 3. Create Something New

If you can dream it, our Creative Team can design it. Proofs will be provided on the garments you select for approval. Your Sales Rep will provide a quote for art time before design work begins.



**YOUR INSPIRATION**  
(THIS VIEW IN AN ILLUSTRATED STYLE,  
MUTED COLORS WITH A DOG AND HIKER)



**OUR DESIGN**



### A FEW MORE DETAILS:

- Reorders of a design will not include additional art fees.
- The minimum order for screen printing is 24 pieces of the design – that can include a mix of garments as long as the art remains the same size and colors.
- We print orders 5-7 days after art approval and payment. Transit times vary by location. Please place your orders with plenty of time before deadlines as rush orders may incur additional fees!
- Custom products are not returnable. In the rare case that a mistake happens in printing, please notify your sales rep immediately for a refund or replacement. Return of the defective product may be required.
- Click [HERE](#) to see our FAQ page.





# SIZE CHART

*Size Selection Should Be Based On Largest Measurement*

<b>UNISEX</b>	<b>CHEST</b>	<b>WAIST</b>	<b>HIP</b>	<b>FITS SIZE</b>
XS <i>Extra Small</i>	34-38"	34-38"	34-37"	4-6 ( <i>Ladies</i> )
S <i>Small</i>	39-40"	39-40"	38-39"	6-8 ( <i>Ladies</i> )
M <i>Medium</i>	41-42"	41-42"	40-41"	10-12 ( <i>Ladies</i> )
L <i>Large</i>	43-44"	43-44"	42-43"	12-14 ( <i>Ladies</i> )
XL <i>Extra Large</i>	45-46"	45-46"	44-45"	14-16 ( <i>Ladies</i> )
2XL <i>Double Extra Large</i>	47-50"	47-50"	46-49"	18-20 ( <i>Ladies</i> )
3XL <i>Triple Extra Large</i>	51-54"	51-54"	50-53"	22-24 ( <i>Ladies</i> )

<b>LADIES</b>	<b>CHEST</b>	<b>WAIST</b>	<b>HIP</b>	<b>FITS SIZE</b>
S <i>Small</i>	32-34"	27-32"	34-35"	4-6
M <i>Medium</i>	35-36"	33-34"	36-37"	6-8
L <i>Large</i>	37-38"	35-36"	38-39"	10-12
XL <i>Extra Large</i>	39-41"	37-39"	40-42"	12-14
2XL <i>Double Extra Large</i>	42-43"	40-41"	43-44"	14-16
3XL <i>Triple Extra Large</i>	44-47"	42-45"	45-48"	18-20

<b>YOUTH</b>	<b>CHEST</b>	<b>WAIST</b>	<b>HIP</b>	<b>FITS SIZE</b>
XS <i>Youth Extra Small</i>	23-25"	23-25"	23-25"	4-5
S <i>Youth Small</i>	26-27"	26-27"	26-27"	6-7
M <i>Youth Medium</i>	28-30"	28-30"	28-30"	8-10
L <i>Youth Large</i>	31-32"	31-32"	31-32"	12-14

<b>DOGS</b>	<b>CHEST CIRCUMFERENCE</b>	<b>BACK LENGTH (FROM NECK)</b>
XS <i>Extra Small</i>	8-12"	8.5"
S <i>Small</i>	13-14"	9.5"
M <i>Medium</i>	15-16"	12"
L <i>Large</i>	17-19"	16"
XL <i>Extra Large</i>	20-26"	21"
2XL <i>Double Extra Large</i>	27-34"	23"
3XL <i>Triple Extra Large</i>	35-40"	29"

