

Crystal Net

Crystal Net is created by applying any combination of up to ten different sizes, colors and shapes of our premium quality machine-cut hotfix Chaton Roses MAXIMA and assortment of flatback stones in a grid formation to the intersecting points of a net according to the specified design or motif. Depending on its intended use, crystal net can be made with elastic or non-elastic string and with loose, looped, filled-in or neat edges. Crystal Net is available in our regular assortment of colors and coatings suitable for hotfix application and in eight stone sizes from ss10 - ss48. A minimum of 1mm spacing between each stone is required. Crystal Net is suitable for sewing and hotfix application, both by hand and machine.

Colors/Colors AB

	Crystal 00030		Green Turmaline 50020
	Jet 23980		Erinite 50010
	White Opal 01000		Olivine 50230
	Black Diamond 40010		Khaki 50330
	Smoked Sapphire 30010		Gold Beryl 10430
	Aquamarine 60000		Jonquil 80100
	Aqua Bohemica 60010		Citrine 80310
	Light Sapphire 30020		Light Topaz 10020
	Light Sapphire Opal 31110		Topaz 10070
	Sapphire 30050		Light Colorado Topaz 10330
	Dark Indigo 30280		Light Smoked Topaz 10210
	Montana 30340		Smoked Topaz 10220
	Deep Sea 33400		Light Gold Quartz 00520
	Capri Blue 60310		Gold Quartz 00530
	Indicolite 60100		Light Peach 90300
	Blue Zircon 60230		Vintage Rose 70530
	Chrysolite 50000		Rose Opal 71350
	Chrysolite Opal 51000		Light Rose 70020
	Peridot 50520		Rose 70010
	Emerald 50730		Indian Pink 70040

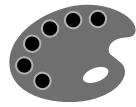
	Fuchsia 70350
	Ruby 90110
	Sun 90310
	Hyacinth 90040
	Padparadscha 90350
	Light Siam 90070
	Red Velvet 90075
	Siam 90090
	Burgundy 90100
	Light Burgundy 90095
	Amethyst 20050
	Amethyst Opal 21110
	Light Amethyst 20020
	Tanzanite 20410
	Purple Velvet 20490

Coatings

	Crystal AB 200 AB		Crystal Peacock Green 259 PeG
	Crystal Argent Flare 242 AgF		Crystal Lagoon 237 Lag
	Crystal Velvet 279 Vel		Crystal Bermuda Blue 296 BBI
	Crystal Honey 235 Hon		Crystal Blue Flare 231 BIF
	Crystal Golden Honey 244 GdH		Crystal Nightfall 260 Ntf
	Crystal Blond Flare 239 BdF		Crystal Labrador 270 Lab
	Crystal Sunrise 219 Snr		Jet Silver Flare 232 SiF
	Crystal Aurum 262 Aur		Jet Hematite 272 Hem
	Crystal Starlight Gold 261 StG		Jet Brown Flare 230 BrF
	Crystal Monte Carlo 277 MtC		
	Crystal Capri Gold 271 CaG		
	Crystal Lava 213 Lav		
	Crystal Red Flame 251 RdF		
	Crystal Venus 234 Ven		

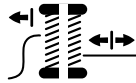
NOTE: Slight deviation in color shade is unavoidable.

Product Specifications



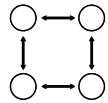
1 STONE COLORS AND SIZES

Crystal Net is created with any combination of up to ten different sizes, colors and shapes of Chaton Roses MAXIMA and flatback stones suitable for hotfix application.



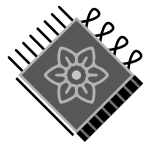
2 STRING TYPE AND COLOR

Crystal Net can be created with either elastic or non-elastic string in white [6], black [5] or mixed [7]. Other colors are also available upon request but may require an MOQ.



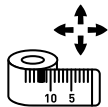
3 SPACING

Crystals are placed on the net in a grid formation with a minimum distance between each stone of 1mm. The spacing can be customized according to your preference.



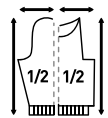
4 EDGE

Crystal Net comes with four possibilities of edges: loose [1], looped [2], filled-in [3] and neat [4], which should be selected according to the net's intended use.



5 DIMENSIONS AND PATTERNS

Crystal Net comes in standard square or rectangular sheets (maximum size: 160x70cm), or as custom-shaped patterns according to submitted graphic specifications.



6 CUSTOMIZATION

Beyond the standard made-to-order specifications, Crystal Net can be further customized with various tweaks, including double strings or with cut-out motifs. Please note that further customization may incur additional costs.



7 APPLICATION

Crystal Net can be applied by hotfix [10] (from size ss16) or sewing, both by hand [9] or machine [8]. For precise application, please consult our Crystal Net Application Manual at www.preciosacomponents.com/applications.

