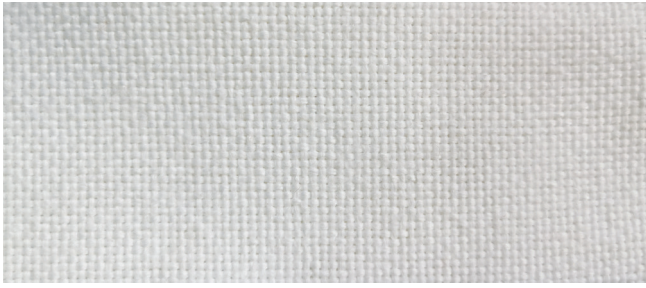
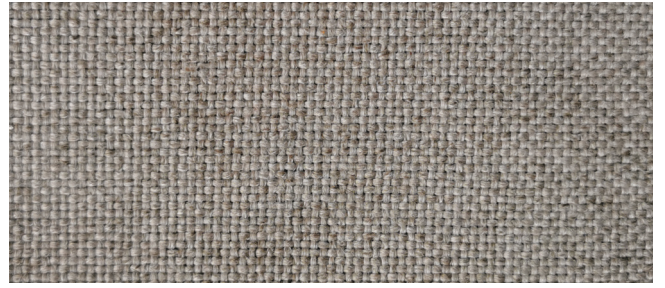


SOLE CS

Cat. Classy



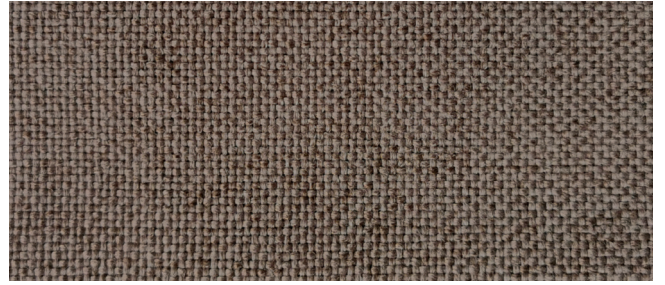
420



441



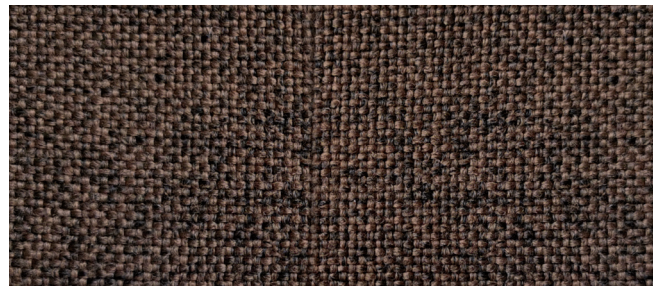
444



440



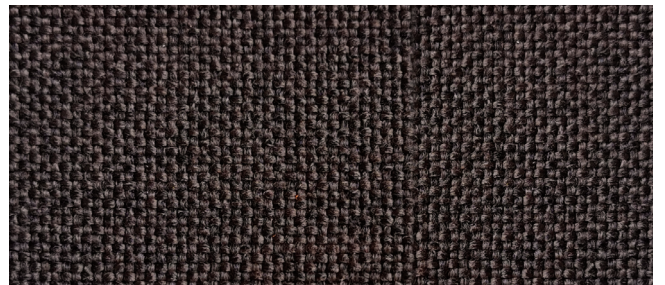
401



416



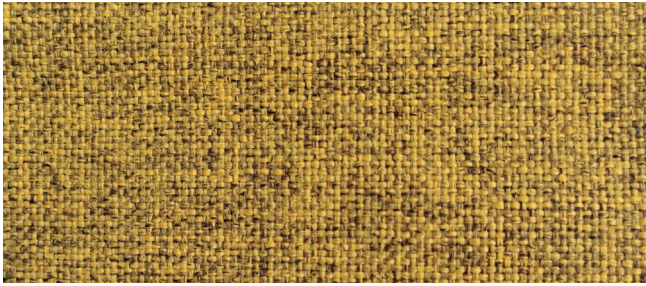
04



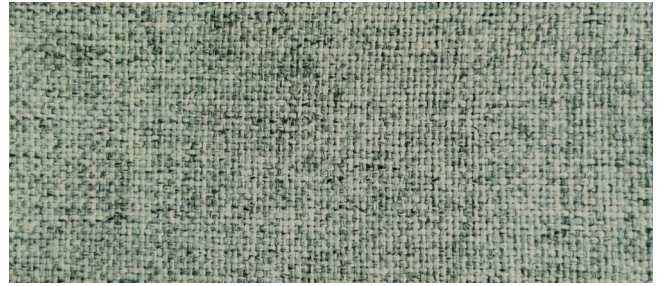
437



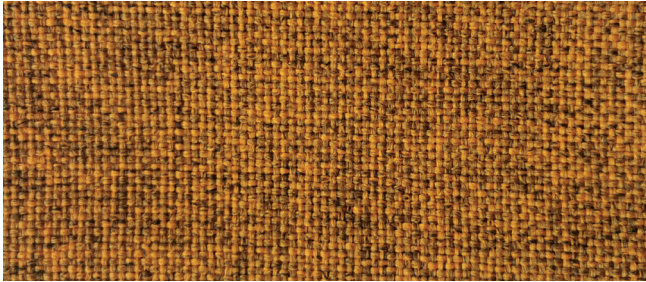
402



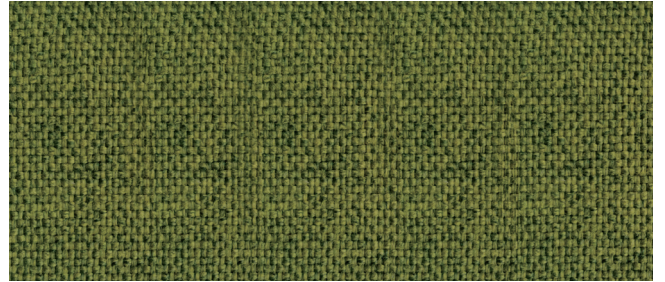
404



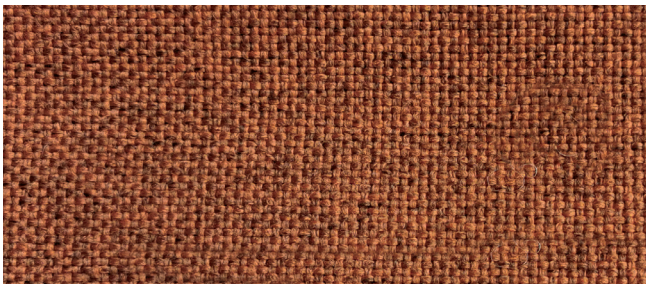
411



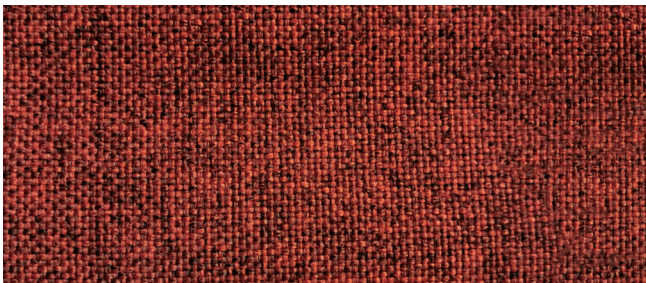
405



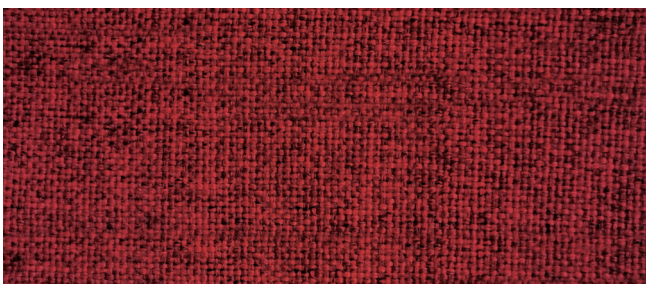
11



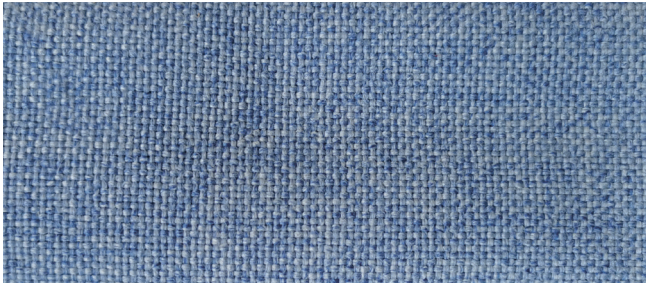
406



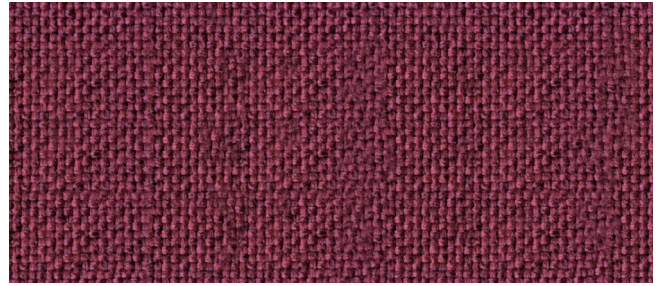
407



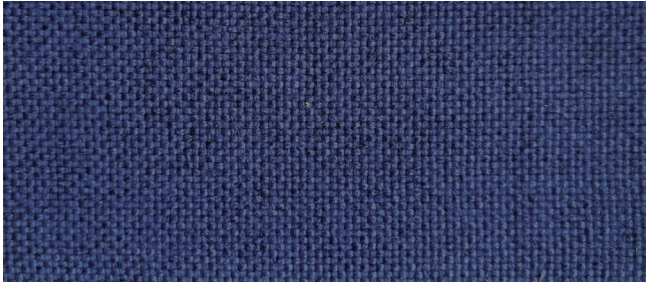
409



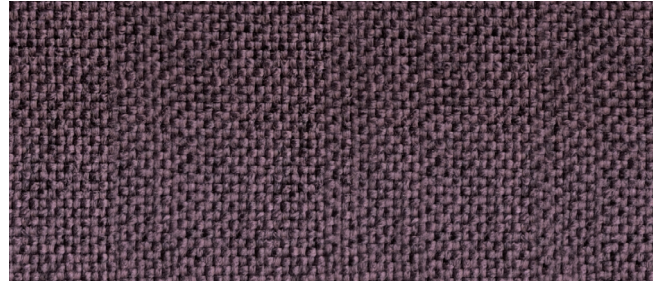
414



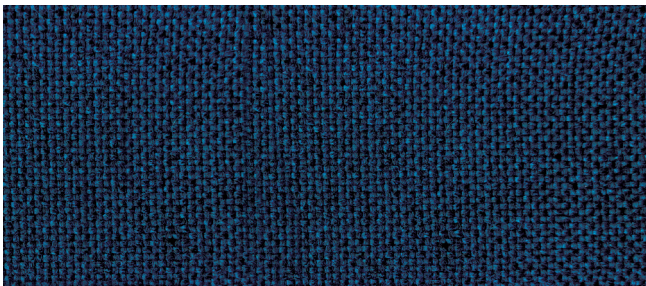
16



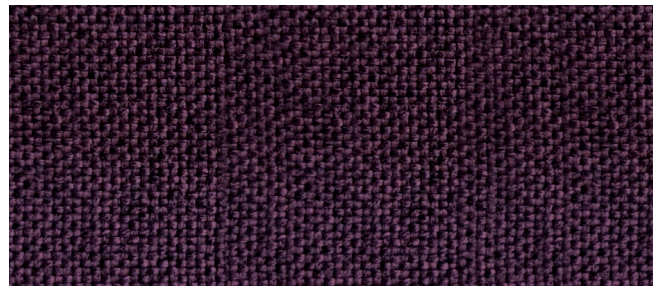
434



432



422



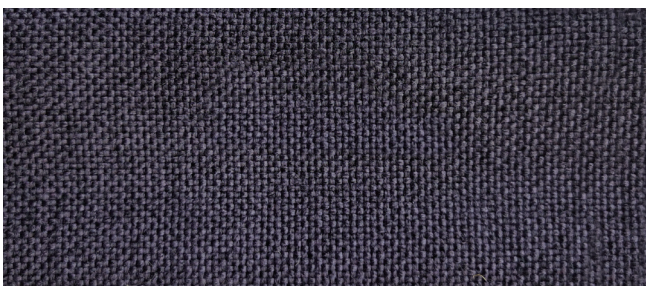
433



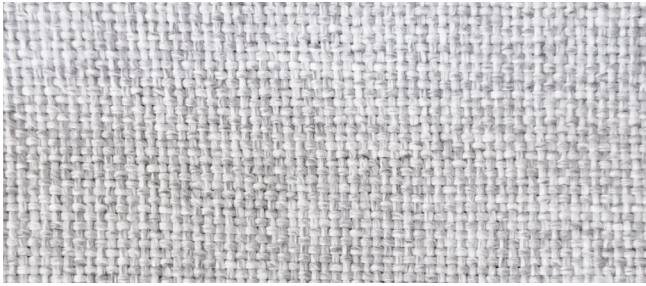
25



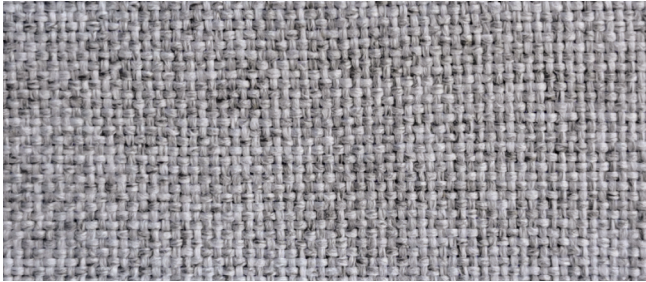
435



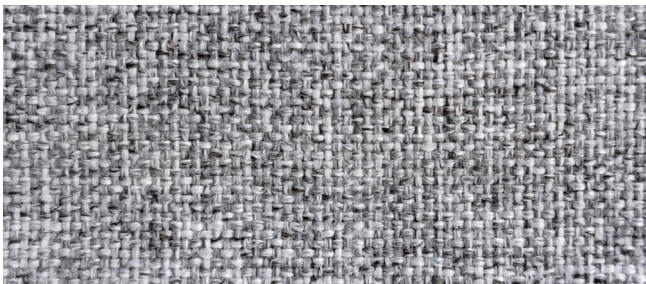
436



443



442



400



417



418

DATASHEET

| | |
|---------------------|---|
| Composition | 100% trevira CS |
| Width | 140cm |
| Weight | 525 g/m ² (+/- 5%) |
| Abrasion resistance | > 50.000 Martindale cycle (EN ISO 12947-2) |
| Pilling | 4/5 (EN ISO 12945-2) |
| Flammability | UNI 9177 - Classe 1 NFP 92-503-507 M1 California TB 117:2013 EN 1021-1&2 BS 5852-Part 0-1 (C&M) DIN 4102 B1 UNI 9175 - 1.IM NFPA 260:2013 IMO MSC 307(88) Annex 1 Part 7-8 BS 5852-Crib5 (with coating) |
| Sound absorption | UNI EN ISO 354:2003 α_w :0,60 |
| Light fastness | 5 (EN ISO 105-02) |
| Fastness to rubbing | Wet 4/5; Dry 4/5 (EN ISO 105x12) |
| Cleaning | Wet cleaning warp. Please see the ISO symbols Shrinkage app. 2,5% |



Sample colours are indicative.
Due to technical reasons it is not possible to guarantee
the same tonality of colour from one lot to the other.

starset
Milano

Starset s.r.l.
Legal HQ: Foro Buonaparte, 69
20121 Milano, Italy
Office: Corso del Popolo, 56
20831 Seregno (MB) Italy
VAT No. 10448120963
T. +39 0362 1511751
info@starsetmilano.com
www.starsetmilano.com

Copyright © Starset s.r.l.
All rights reserved