



EXCELON - VINYL TILE

Imperial Texture, Designer, Stonetex, Terrazz RECOMMENDED MAINTENANCE PROCEDURES

Initial Care: (upon installation): Must conform to Australian Standard AS1884-2012 Floor Coverings – Resilient Sheet and Tiles – Laying and Maintenance Practices, Section 4.3. “Fast Start” does not constitute a pre-sealed surface.

MANUFACTURERS INSTRUCTIONS – To provide a working surface prior to hand-over.

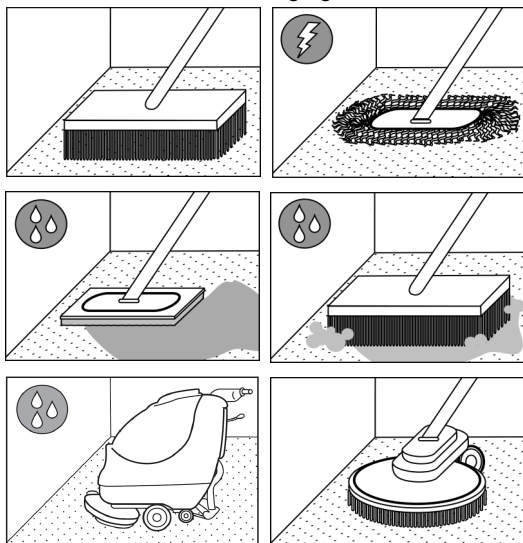
1. Remove all debris.
2. Sweep / vacuum / dust mop.
3. Complete one of the following options.

Option 1 – Scrub floor using a neutral detergent (Armstrong Flooring ONCE ‘N DONE). Rinse surface with fresh water. Ensure surface is completely dry then apply a minimum three (3) coats of high quality, metal cross-linked finish (Armstrong Flooring SHINEKEEPER). Allow the surface to dry completely between each coat. Dry burnish.

Option 2 – If floor is badly soiled: strip back floor surface using a low alkali stripper (Armstrong Flooring NEW BEGINNING). Rinse surface with fresh water. Ensure surface is completely dry, then apply a coat of high quality sealer (Armstrong Flooring PREMIUM SEALER). Allow the surface to dry completely then apply a minimum three (3) coats of high quality, metal cross-linked finish (Armstrong Flooring SHINEKEEPER). Allow the surface to dry completely between each coat. Dry burnish clean floor using a single disc straight line polisher up to 1700RPM (spray burnish if desired using **Once ‘n Done*** floor cleaner). Use white pad only.

Ongoing Care: (after hand-over): Apply additional coats of polish to create a foundation for ongoing maintenance, i.e. to withstand regular scrubbing and burnishing. Depending upon condition of surface repeat and follow Option 1 or Option 2 and build up total coats of applied polish to desired level. For optimum performance a total to five (5) coats of polish are recommended.

Routine care: Frequency and type of maintenance required depends on traffic flow, application, environmental conditions and customer requirements. Light and accent colours can require more maintenance, where practical choose darker, more camouflaging colours.



Daily:

- Sweep, static dust/microfibre mop, vacuum thoroughly to remove all dirt and dust.

Daily / Regular:

- Damp Mop (Nylon/Rayon/Microfibre)

Regular:

- Spot scrub edges & fixtures using soft bristled broom and **Once ‘n Done*** floor cleaner. Rinse clean

Regular: Large & unobstructed areas.

- Wet scrub using automatic scrubbing machine or single disc polisher ≤600RPM (use medium nylon brush, red or blue pad) and **Once ‘n Done*** floor cleaner. Rinse clean.
- Dry burnish clean floor using a single disc straight line polisher up to 1700RPM (spray burnish if desired using **Once ‘n Done*** floor cleaner). Use white pad only.

Protection:

Use walk-off mats that are as wide as the doorway entrances and long enough (min. 3 average paces) to trap dirt before reaching the resilient floor. Ensure that walk-off mats are cleaned frequently.

Sand and grit are abrasive and can damage floors; stopping dirt at the entrance means less dirt trafficked through the building, protecting your investment and helping keep maintenance costs down.

Ensure all furniture legs have well maintained non-abrasive feet. Exposed metal legs can damage flooring.

Rubber products such as chair feet, tyres & mats can stain flooring, do not leave these in contact with flooring.

Stain Removal:

Treatment should be carried out when stains are fresh, immediately remove contaminant. Spot clean with a neutral floor cleaner using soft nylon brush. After stains have been removed, rinse floor with clean water and allow to dry.

Warnings & General Hints

1. DO NOT USE: Highly acidic, alkali, caustic or solvent agents such as hydrochloric/sulfamic acid, toilet bowl cleaner, paint stripper, benzene, toluol, acetone or strong scouring powders, as these will damage the floor.
2. All vinyl flooring should be protected during the construction period. Armstrong Flooring does not recommend covering our PVC floor or wall products with plastic materials (such as builders plastic, corfluke, carpet protector film etc), consult your supplier for recommendations.
3. Adhesive residue may be removed using a clean white cloth dampened with small amounts of mineral turps, carefully following warnings on container, immediately rinse with clean water (test in inconspicuous area first)
4. Auto scrubbing in unobstructed areas takes approximately 20% of the time of damp mopping. For maximum efficiency use damp mopping in obstructed areas only.
5. Spot mopping / spot scrubbing should be used when necessary. **Spillages** – post wet floor signs and wipe up immediately. Allow to dry and remove signs.

For further Armstrong Flooring information: