

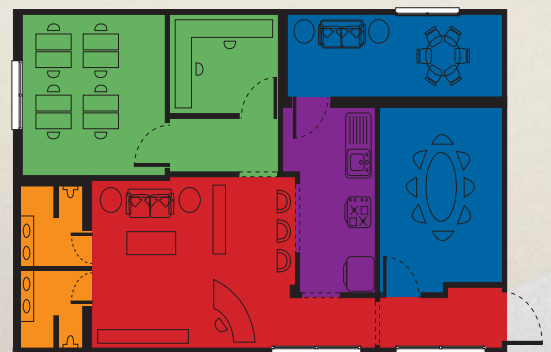
Maintaining the appearance
and extending the life of
ACCOLADE PLUS
ACCOLADE Foothold
ACCOLADE SAFE



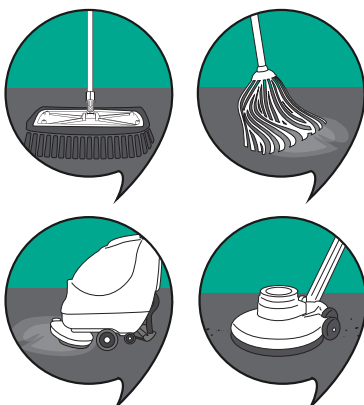


ACCOLADE PLUS, ACCOLADE FOOTHOLD and ACCOLADE SAFE maintenance

- Low traffic area
- Medium traffic area
- High traffic area
- Barefoot traffic – Wet areas
- Shoe traffic – Dry areas



ACCOLADE PLUS maintenance



> Low traffic areas

Daily

Sweep, static dust mop and/or vacuum thoroughly to remove all dirt and dust. Damp mop, using pH neutral floor cleaner.

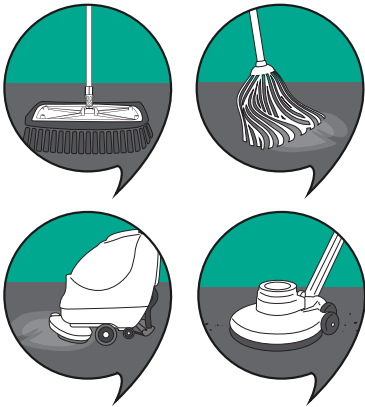
Quarterly

Wet Scrub, using an automatic scrubbing machine fitted with a medium nylon brush (or similar), red or blue pad and pH neutral floor cleaner. Spot scrub around edges and fixtures using a soft bristled broom.

Dry burnish, burnishing should only be carried out on a clean floor using a single disc straight line polisher up to 1700RPM, use white pad only or up to 600RPM swing polisher using red pad (this process enhances floor protection).

ACCOLADE PLUS maintenance

> Medium traffic areas



Daily

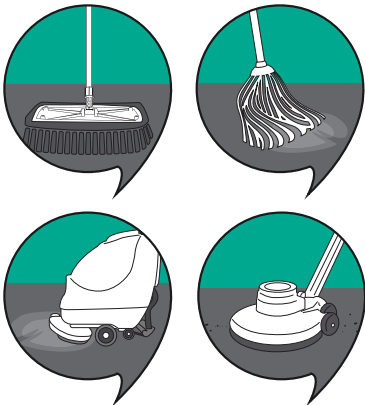
Sweep, static dust mop and/or vacuum thoroughly to remove all dirt and dust. Damp mop, using pH neutral floor cleaner.

Quarterly

Wet Scrub, using an automatic scrubbing machine fitted with a medium nylon brush (or similar), red or blue pad and pH neutral floor cleaner. Spot scrub around edges and fixtures using a soft bristled broom.

Dry burnish, burnishing should only be carried out on a clean floor using a single disc straight line polisher up to 1700RPM, use white pad only or up to 600RPM swing polisher using red pad (this process enhances floor protection).

> High traffic areas



Daily

Sweep, static dust mop and/or vacuum thoroughly to remove all dirt and dust. Damp mop, using pH neutral floor cleaner.

Quarterly

Wet Scrub, using an automatic scrubbing machine fitted with a medium nylon brush (or similar), red or blue pad and pH neutral floor cleaner. Spot scrub around edges and fixtures using a soft bristled broom.

Dry burnish, burnishing should only be carried out on a clean floor using a single disc straight line polisher up to 1700RPM, use white pad only or up to 600RPM swing polisher using red pad (this process enhances floor protection).

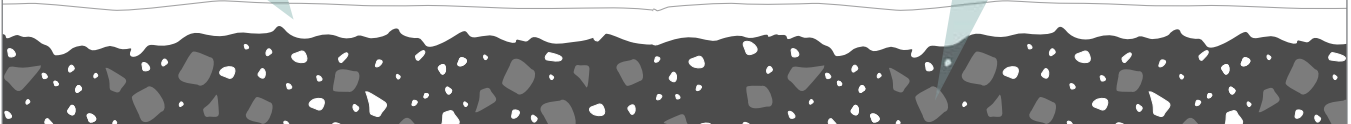
ACCOLADE PLUS PUR²

Polyurethane Coating

ACCOLADE PLUS incorporates a generous polyurethane bonded surface treatment.

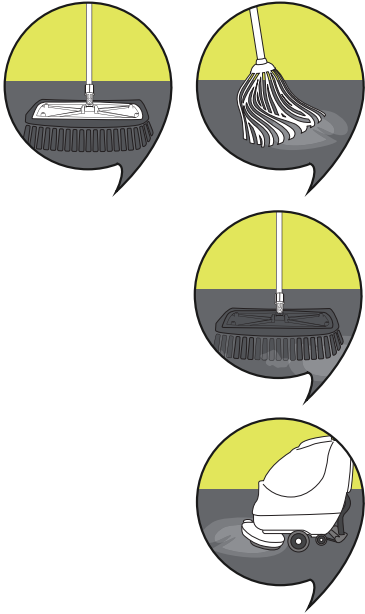
Polyurethane through mix

ACCOLADE PLUS incorporates polyurethane throughout its thickness contributing to its excellent maintenance characteristics and outstanding durability.



ACCOLADE Foothold maintenance

> Barefoot traffic – Wet areas



Daily

Sweep and/or vacuum thoroughly to remove all dirt and debris. Spot clean as necessary using pH neutral floor cleaner.

Weekly – Small areas

Wet Scrub, using soft bristled broom and pH neutral floor cleaner. Rinse clean to remove excess.

Weekly – Large and unobstructed areas

Wet Scrub, using an automatic scrubbing machine fitted with a medium nylon brush (or similar) and pH neutral floor cleaner. Spot scrub around edges and fixtures using a soft bristled broom. Rinse clean.



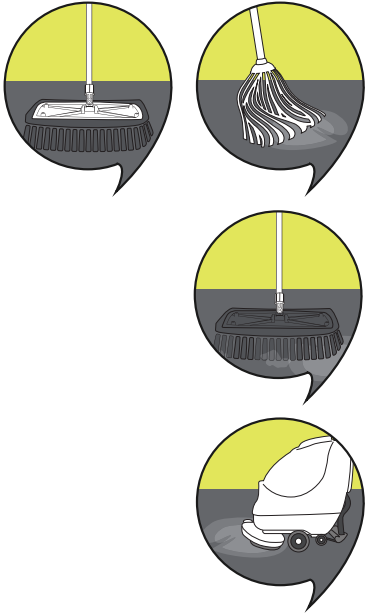
Frequency and type of maintenance required depends on traffic flow, application, environmental conditions and customer requirements. Light and accent colours can require more maintenance; where practical choose darker more camouflaging colours.

Protection:

1. Use walk-off mats at entrance to trap sand and grit as they are abrasive and can damage floors. Ensure that walk-off mats are cleaned frequently.
2. Ensure all furniture legs have well maintained non-abrasive feet.

ACCOLADE SAFE maintenance

> Barefoot traffic – Wet areas



Daily

Sweep, static dust mop and/or vacuum thoroughly to remove all dirt and dust. Damp mop, using pH neutral floor cleaner.

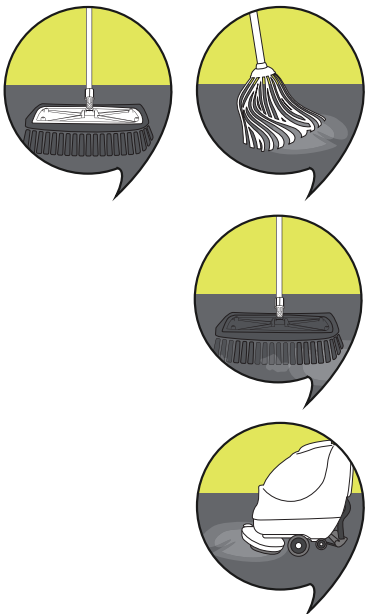
Weekly – Small areas

Wet Scrub, using soft bristled broom and pH neutral floor cleaner. Clean mop to remove excess. For Accolade Safe, avoid the use of highly acidic, caustic or solvent agents such as toilet bowl cleaner.

Weekly – Large and unobstructed areas

Wet Scrub, using an automatic scrubbing machine fitted with a medium nylon brush (or similar) and pH neutral floor cleaner. Spot scrub around edges and fixtures using a soft bristled broom. For Accolade Safe, avoid the use of highly acidic, caustic or solvent agents such as toilet bowl cleaner.

> Shoe traffic – Dry areas



Daily

Sweep, static dust mop and/or vacuum thoroughly to remove all dirt and dust. Damp mop, using pH neutral floor cleaner.

Weekly – Small areas

Wet Scrub, using soft bristled broom and pH neutral floor cleaner. Clean mop to remove excess.

Weekly – Large and unobstructed areas

Wet Scrub, using an automatic scrubbing machine fitted with a medium nylon brush (or similar) and pH neutral floor cleaner. Spot scrub around edges and fixtures using a soft bristled broom.

Frequency and type of maintenance required depends on traffic flow, application, environmental conditions and customer requirements. Light and accent colours can require more maintenance; where practical choose darker more camouflaging colours.

Protection:

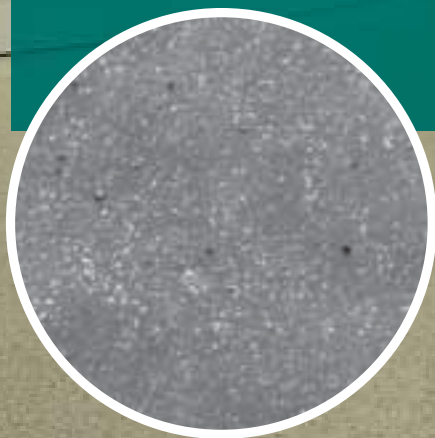
1. Use walk-off mats at entrance to trap sand and grit as they are abrasive and can damage floors. Ensure that walk-off mats are cleaned frequently.
2. Ensure all furniture legs have well maintained non-abrasive feet.

Microscopic imaging demonstrates how ACCOLADE PLUS responds to regular burnishing.

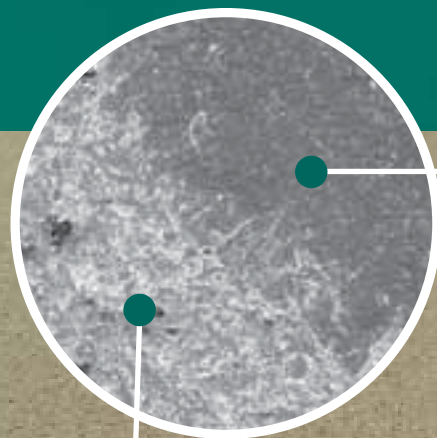
In between regular cleaning, traffic can cause scuffing and abrasion to the floor, allowing dirt, dust and grit to attach to the surface, compromising the floor's appearance.

Cleaning with pH neutral floor cleaner and a mop or using an automatic scrubbing machine removes this build up prior to burnishing.

> ACCOLADE PLUS as originally installed



> ACCOLADE PLUS before and after burnishing

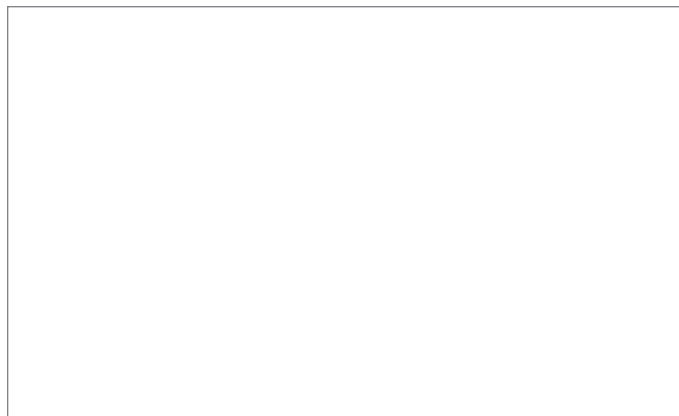


Burnished area

Scuffed area



Contact:



Armstrong Flooring Pty Ltd

29 – 39 Mills Road, Braeside, 3195 Victoria Australia

For further information and samples:

Australia Freecall 1800 632 624

Email customer_services@armstrongflooring.com or contact us on the web

www.armstrongflooring.com.au