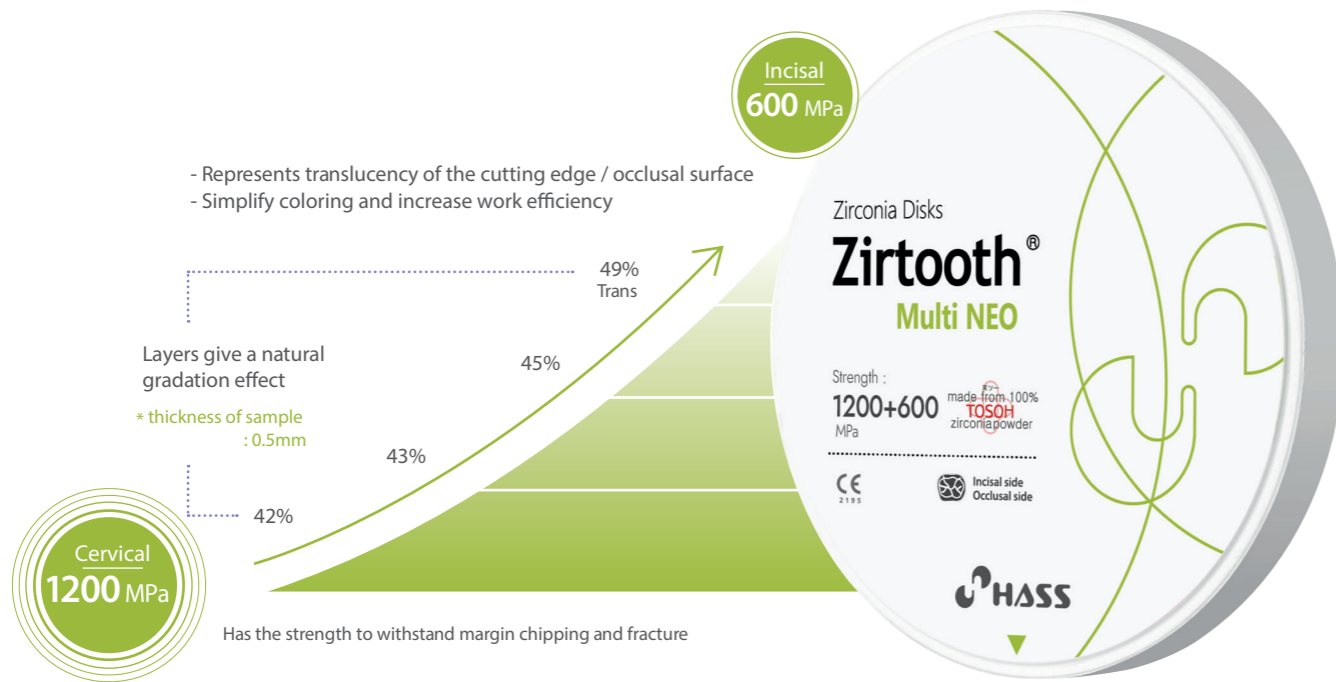


# Zirtooth® Multi NEO

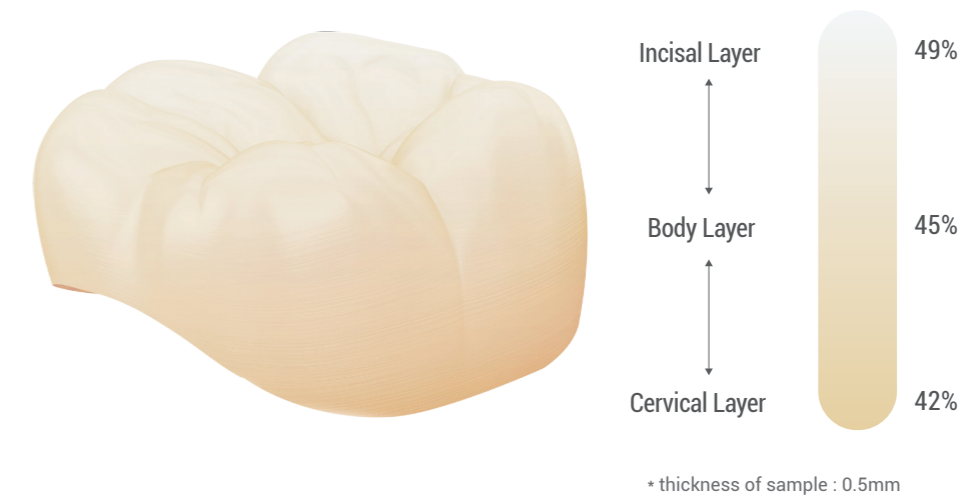
## High Aesthetic

- Represent High Translucency of the Incisal Layer similar with Natural Teeth
- Various shade composition based on the Vita Shade Guide
- Multi strength & multi translucency



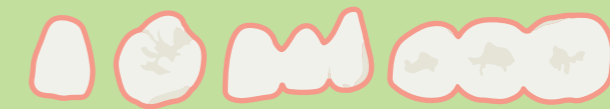
## Multi NEO

- Translucency ●●●●●
- Strength ●●●○○
- Aesthetic ●●●●●



## Indication

- Anterior Crown
- Posterior Crown
- 3-Unit Bridge



## Sintering Schedule

Step	1	2	3
Temperature	Room temperature ~ 1000°C	1000°C~ 1500°C	1500°C ~ Room temperature
Heating Rate	Max 9°C	Max 3.5°C	Max 8°C
Holding Time	10 min	2 hours	-

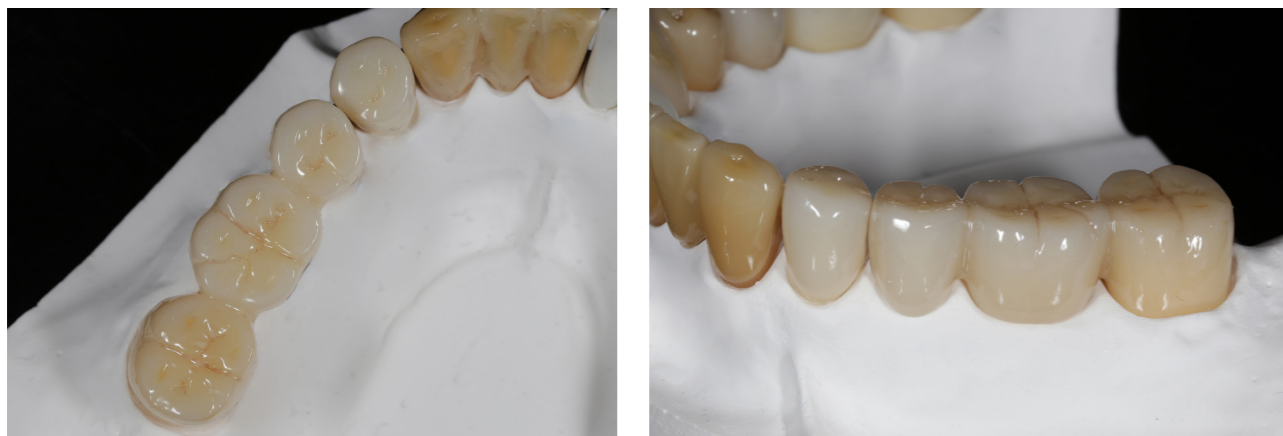
## Size

Model No.	Dimensions	Model No. * Zirkozahn	Dimensions
O-9812	ø98 × 12T	Z-95(12)	ø95 × 12T
O-9814	ø98 × 14T	Z-95(14)	ø95 × 14T
O-9816	ø98 × 16T	Z-95(16)	ø95 × 16T
O-9818	ø98 × 18T	Z-95(18)	ø95 × 18T
O-9820	ø98 × 20T	Z-95(20)	ø95 × 20T
O-9822	ø98 × 22T	Z-95(22)	ø95 × 22T
O-9825	ø98 × 25T	Z-95(25)	ø95 × 25T

## Available Shades

HT (White)
A1, A2, A3, A3.5, A4
B1, B2, B3, B4
C1, C2, C3, C4
D2, D3, D4

## Clinical Case



Zirtooth Multi Neo A2 - Shade A2(35), A3(36), A3.5(37)  
\* after color characterization