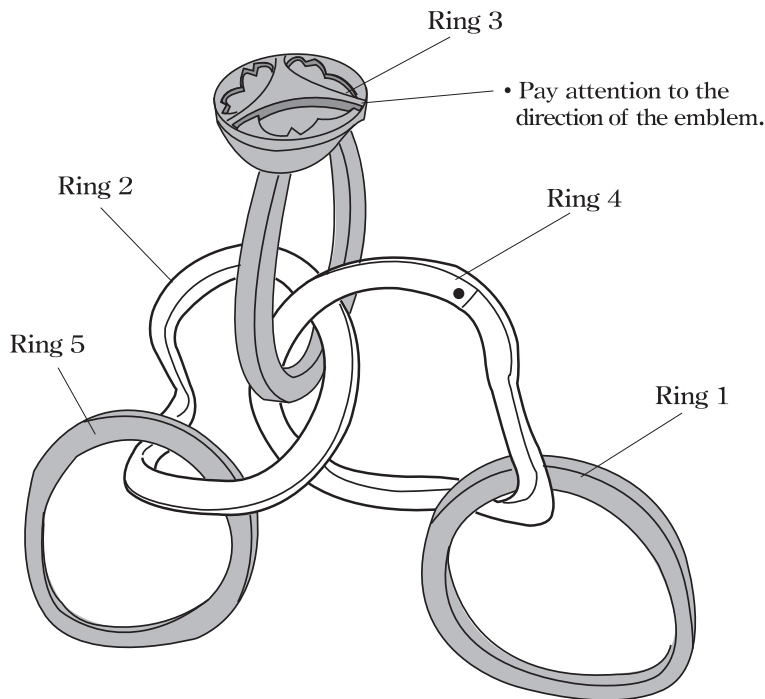
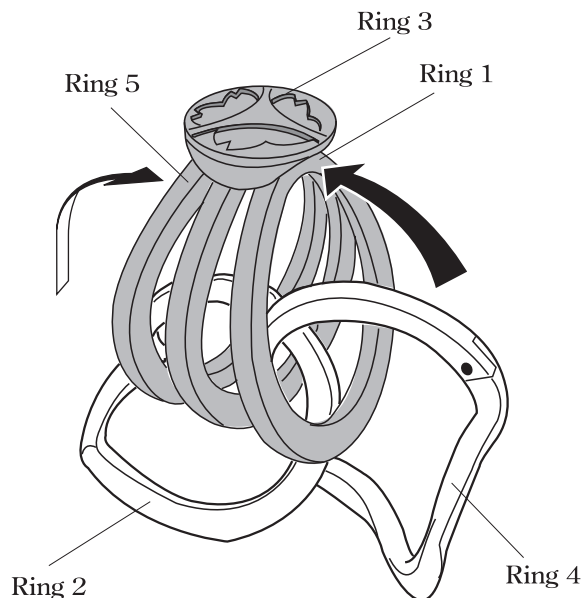


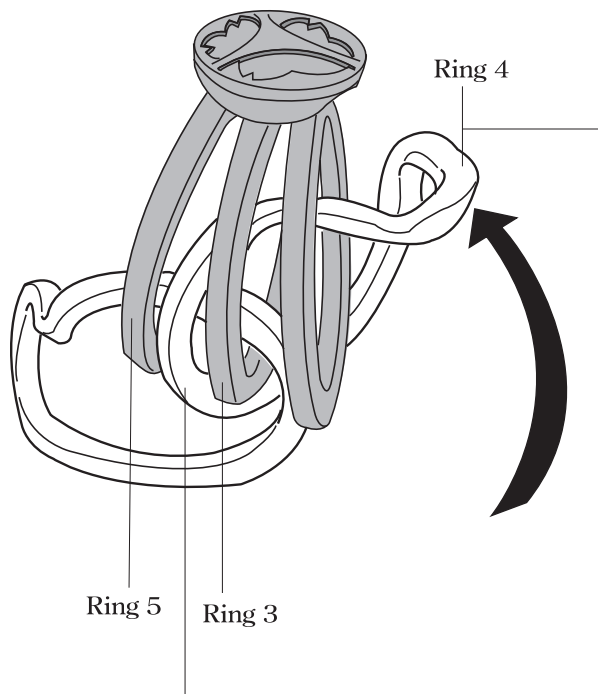
1. First, arrange the positions of the rings as per the illustration below. Each ring has been assigned a number to assist with the explanation.



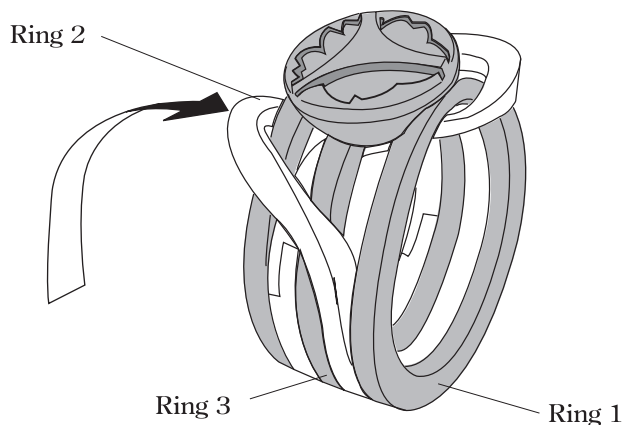
2. Next, fix the pointy part of rings 1 and 5 to the underside of the emblem on ring 3.



3. Next, bring ring 4 up and move it between rings 3 and 5.



4. Finally, bring ring 2 up and move it between rings 1 and 3 in the same way as instruction 3.



5. When completed, the rings should be aligned in numerical order as per the illustration below.

